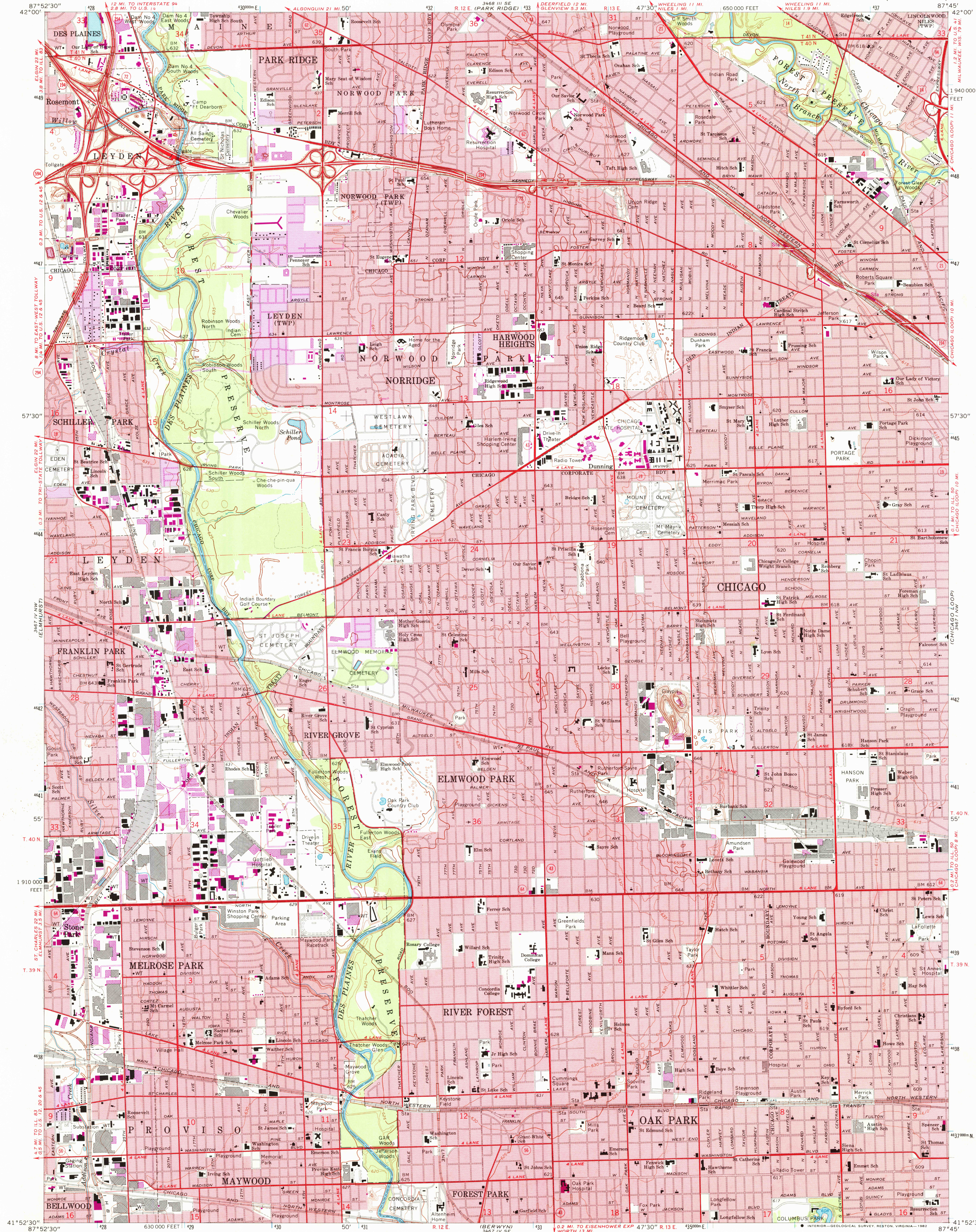


UNITED STATES  
DEPARTMENT OF THE INTERIOR  
GEOLOGICAL SURVEY

RIVER FOREST QUADRANGLE  
ILLINOIS-COOK CO.  
7.5 MINUTE SERIES (TOPOGRAPHIC)



Maped, edited, and published by the Geological Survey  
in cooperation with State of Illinois Geological Survey  
Control by USGS, USC&GS, City of Chicago, and  
Cook County Highway Department  
Planimetry by photogrammetric methods from aerial photographs  
taken 1962-63. Topography by planimetric surveys 1924-25  
Revised 1963  
Polyconic projection. 1927 North American datum  
10,000-foot grid based on Illinois coordinate system, east zone  
1000-meter Universal Transverse Mercator grid ticks,  
zone 16, shown in blue  
Red tint indicates areas in which only landmark buildings are shown  
Revisions shown in purple compiled from aerial photographs  
taken 1972. This information not field checked  
Purple tint indicates extension of urban areas

Map photoinspected 1978  
No major culture or drainage changes observed

THIS MAP COMPLIES WITH NATIONAL MAP ACCURACY STANDARDS  
FOR SALE BY U.S. GEOLOGICAL SURVEY, RESTON, VIRGINIA 22092  
AND BY THE STATE GEOLOGICAL SURVEY, CHAMPAIGN, ILLINOIS 61820  
A FOLDER DESCRIBING TOPOGRAPHIC MAPS AND SYMBOLS IS AVAILABLE ON REQUEST

To place on the predicted North American Datum 1983  
move the projection lines 2 meters north and  
5 meters east as shown by dashed corner ticks

ROAD CLASSIFICATION  
Heavy-duty ——— Light-duty ———  
Medium-duty ——— Unimproved dirt ———  
Interstate Route ——— U.S. Route ——— State Route ———

RIVER FOREST, ILL.  
N4152.5-W8745.7.5  
PHOTOINSPECTED 1978  
1963  
PHOTOREVISED 1972  
AMS 3467 IV NE-SERIES V863

SEP 27 1982