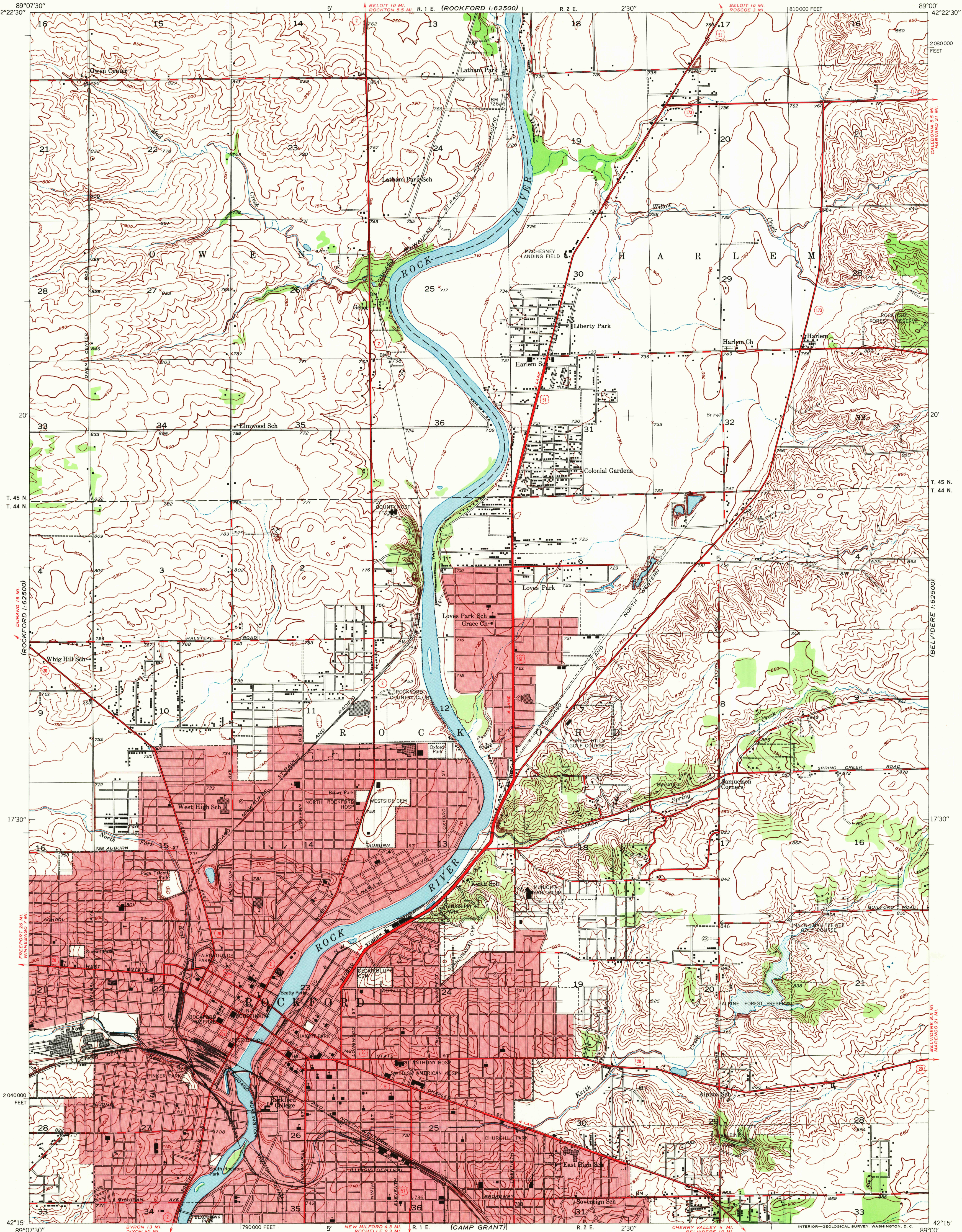


UNITED STATES
DEPARTMENT OF THE INTERIOR
GEOLOGICAL SURVEY

STATE OF ILLINOIS
DWIGHT H. GREEN, GOVERNOR
DEPARTMENT OF REGISTRATION AND EDUCATION
FRANK G. THOMPSON, DIRECTOR
GEOLOGICAL SURVEY DIVISION, M. M. LEIGHTON, CHIEF,
URBANA, ILLINOIS

ROCKFORD QUADRANGLE
ILLINOIS—WINNEBAGO CO.
7.5 MINUTE SERIES (TOPOGRAPHIC)



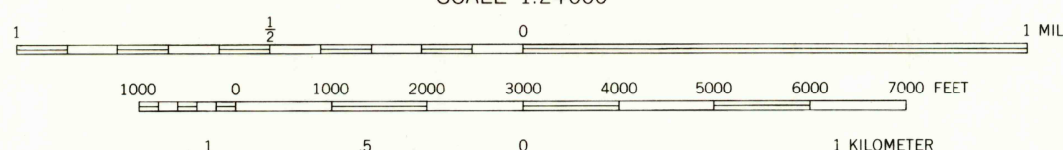
Mapped, edited, and published by the Geological Survey
Control by USGS and USC&GS

Topography from aerial photographs by multiplex methods,
and by plane-table surveys
Aerial photographs taken 1945. Field check, 1947

Polyconic projection. 1927 North American datum
10,000-foot grid based on Illinois coordinate system,
West zone

Red tint indicates area in which only
landmark buildings are shown

TRUE NORTH
MAGNETIC NORTH
APPROXIMATE MEAN
DECLINATION, 1947



CONTOUR INTERVAL 10 FEET
DATUM IS MEAN SEA LEVEL

THIS MAP COMPLIES WITH NATIONAL MAP ACCURACY STANDARDS
FOR SALE BY U. S. GEOLOGICAL SURVEY, WASHINGTON 25, D. C.
AND BY THE STATE GEOLOGICAL SURVEY, URBANA, ILLINOIS

ROAD CLASSIFICATION
Heavy-duty ——— Light-duty ———
Medium-duty ——— Unimproved dirt ———
U. S. Route ——— State Route ———

ROCKFORD, ILL.
N4215-W8900/7.5

PRINTED 1949

USGS
HISTORICAL FILE
TOPOGRAPHIC DIVISION

JAN 13 1972