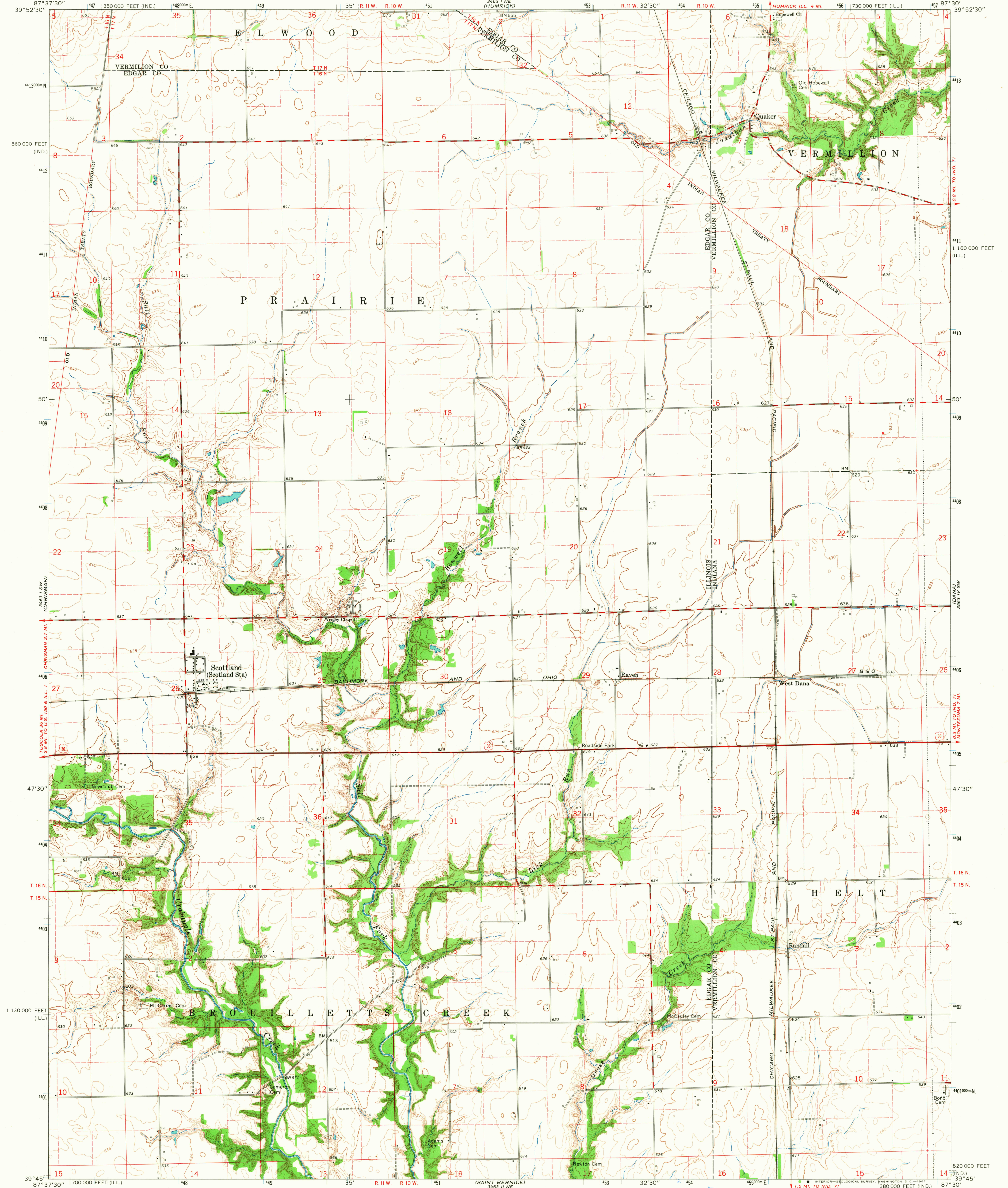
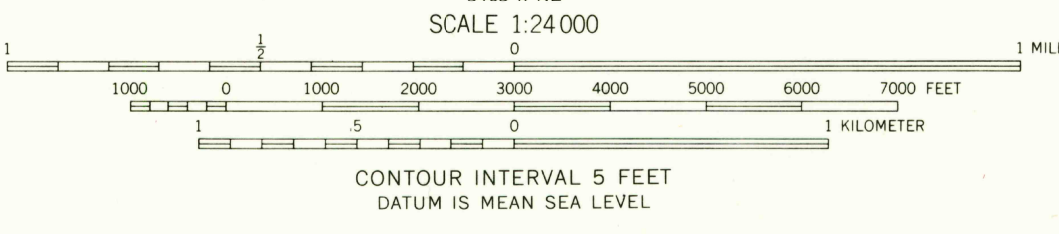
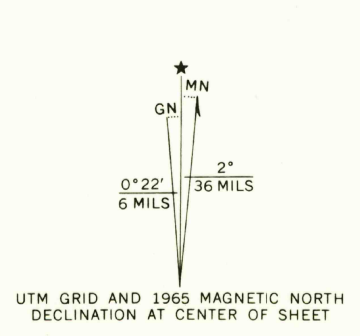


UNITED STATES  
DEPARTMENT OF THE INTERIOR  
GEOLOGICAL SURVEY

SCOTTLAND QUADRANGLE  
ILLINOIS-INDIANA  
7.5 MINUTE SERIES (TOPOGRAPHIC)  
SE/4 RIDGE FARM 15' QUADRANGLE



Mapped, edited, and published by the Geological Survey  
Indiana area mapped in cooperation with Indiana  
Department of Natural Resources  
Control by USGS and USC&GS  
Topography by photogrammetric methods from aerial  
photographs taken 1964. Field checked 1965  
Supersedes map dated 1955  
Polyconic projection. 1927 North American datum.  
10,000-foot grids based on Illinois coordinate system, east zone  
and Indiana coordinate system, west zone  
1000-meter Universal Transverse Mercator grid ticks,  
zone 16, shown in blue  
Fine dashed lines indicate selected fence and field lines where  
generally visible on aerial photographs. This information is unchecked



THIS MAP COMPLIES WITH NATIONAL MAP ACCURACY STANDARDS  
FOR SALE BY U.S. GEOLOGICAL SURVEY, WASHINGTON, D.C. 20242,  
STATE GEOLOGICAL SURVEY, URBANA, ILLINOIS 61801,  
AND INDIANA DEPARTMENT OF NATURAL RESOURCES, INDIANAPOLIS, INDIANA 46204  
A FOLDER DESCRIBING TOPOGRAPHIC MAPS AND SYMBOLS IS AVAILABLE ON REQUEST

USGS  
Historical File  
Topographic Division



ROAD CLASSIFICATION  
Heavy-duty ——— Light-duty ———  
Medium-duty ——— Unimproved dirt ———  
U.S. Route

HISTORICAL  
U.S.G.S.  
SCOTTLAND, ILL.-IND.  
SE/4 RIDGE FARM 15' QUADRANGLE  
N3945-W8730/7.5  
1965  
TOPOGRAPHIC DIVISION  
AMS 3463 I SE-SERIES V863

2555  
APR 25 1967  
HISTORICAL