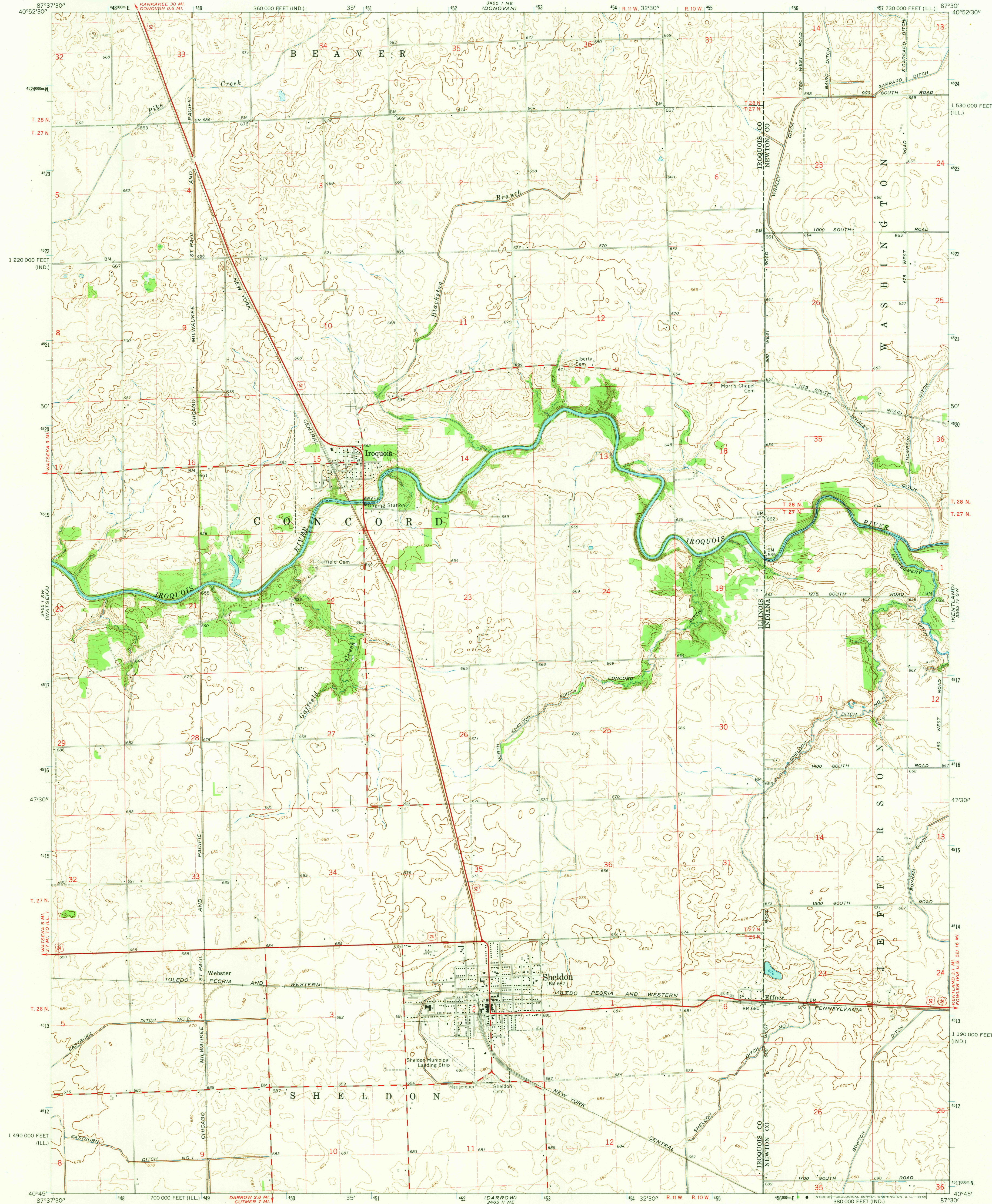
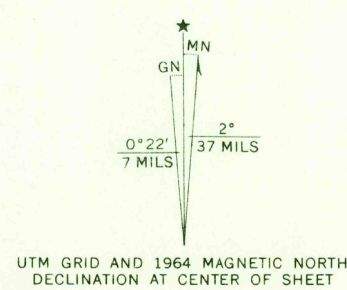


UNITED STATES  
DEPARTMENT OF THE INTERIOR  
GEOLOGICAL SURVEY

SHELDON QUADRANGLE  
ILLINOIS-INDIANA  
7.5 MINUTE SERIES (TOPOGRAPHIC)  
SE 1/4 WATSEKA 15' QUADRANGLE



Maped, edited, and published by the Geological Survey  
Control by USGS, USC&GS, and Indiana Flood Control  
and Water Resources Commission  
Topography by photogrammetric methods from aerial  
photographs taken 1959 and 1963 and planetable surveys 1961 and 1964  
Polyconic projection. 1927 North American datum  
10,000-foot grids based on Illinois coordinate system, east zone,  
and Indiana coordinate system, west zone  
1000-meter Universal Transverse Mercator grid ticks,  
zone 16, shown in blue  
Fine red dashed lines indicate selected fence and field lines where  
generally visible on aerial photographs. This information is unchecked



SCALE 1:24,000  
CONTOUR INTERVAL 5 FEET  
DATUM IS MEAN SEA LEVEL

THIS MAP COMPLIES WITH NATIONAL MAP ACCURACY STANDARDS  
FOR SALE BY U. S. GEOLOGICAL SURVEY, WASHINGTON, D. C. 20242,  
STATE GEOLOGICAL SURVEY, URBANA, ILLINOIS,  
AND INDIANA DEPARTMENT OF CONSERVATION, INDIANAPOLIS, INDIANA  
A FOLDER DESCRIBING TOPOGRAPHIC MAPS AND SYMBOLS IS AVAILABLE ON REQUEST

USGS  
Historical File  
Topographic Division



ROAD CLASSIFICATION  
Heavy-duty ——— Light-duty ———  
Medium-duty ——— Unimproved dirt ———  
U. S. Route

U.S.G.S.  
FILE COPY  
TOPOGRAPHIC DIVISION

SHELDON, ILL.-IND.  
SE 1/4 WATSEKA 15' QUADRANGLE  
N4045-W8730/7.5

1964  
AMS 3465 1 SE-SERIES V863

AUG 10 1965

2710