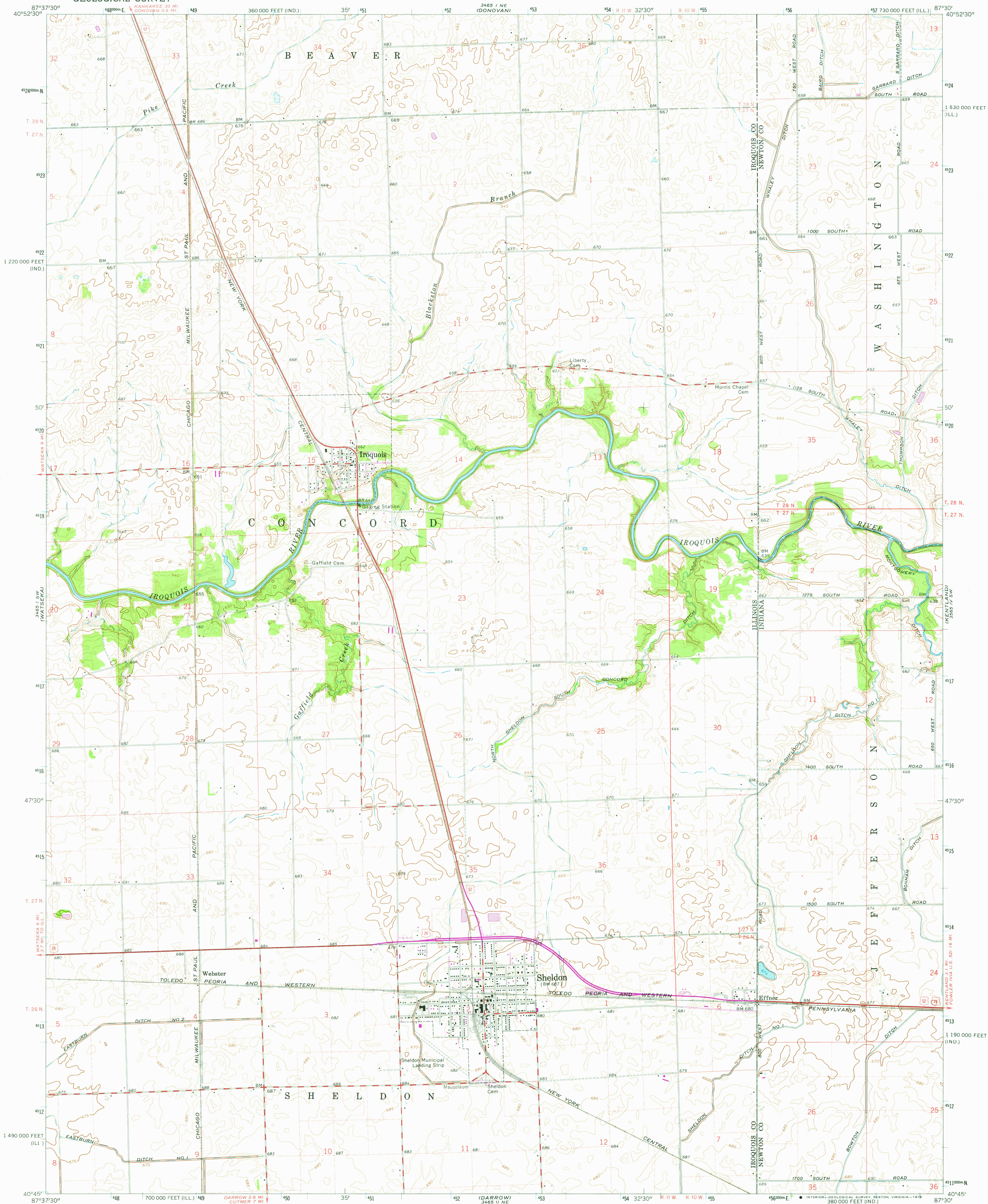
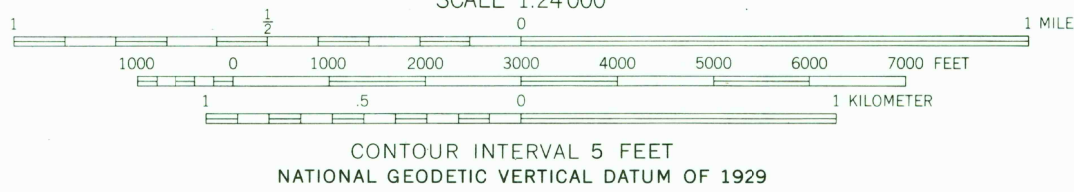
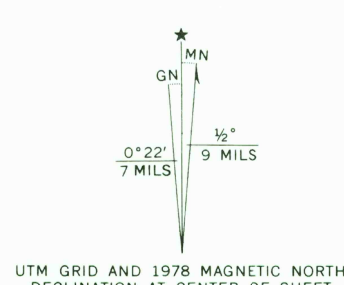


UNITED STATES
DEPARTMENT OF THE INTERIOR
GEOLOGICAL SURVEY

SHELDON QUADRANGLE
ILLINOIS-INDIANA
7.5 MINUTE SERIES (TOPOGRAPHIC)



Mapped, edited, and published by the Geological Survey
Control by USGS, USC&GS, and Indiana Flood Control
and Water Resources Commission
Topography by photogrammetric methods from aerial
photographs taken 1959 and 1963 and planetable surveys 1961 and 1964
Polyconic projection. 1927 North American datum
10,000-foot grids based on Illinois coordinate system, east zone,
and Indiana coordinate system, west zone
1000-meter Universal Transverse Mercator grid ticks,
zone 16, shown in blue
Fine red dashed lines indicate selected fence and field lines where
generally visible on aerial photographs. This information is uncheckd
Revisions shown in purple compiled from aerial photographs taken
1977. Map edited 1978. This information not field checked



THIS MAP COMPLIES WITH NATIONAL MAP ACCURACY STANDARDS
FOR SALE BY U.S. GEOLOGICAL SURVEY, RESTON, VIRGINIA 22092
STATE GEOLOGICAL SURVEY, URBANA, ILLINOIS 61801
AND INDIANA DEPARTMENT OF NATURAL RESOURCES, INDIANAPOLIS, INDIANA 46204
A FOLDER DESCRIBING TOPOGRAPHIC MAPS AND SYMBOLS IS AVAILABLE ON REQUEST



ROAD CLASSIFICATION
Primary highway, hard surface
Secondary highway, hard surface
Light-duty road, hard or improved surface
Unimproved road
Interstate Route
U. S. Route
State Route
USGS
Historical File
Topographic Division
N4045-W8730-7.5
1964
PHOTOREVISED 1978
AMS 3465 I SE-SERIES V863

SHELDON, ILL.-IND.

NOV 06 1978
2840