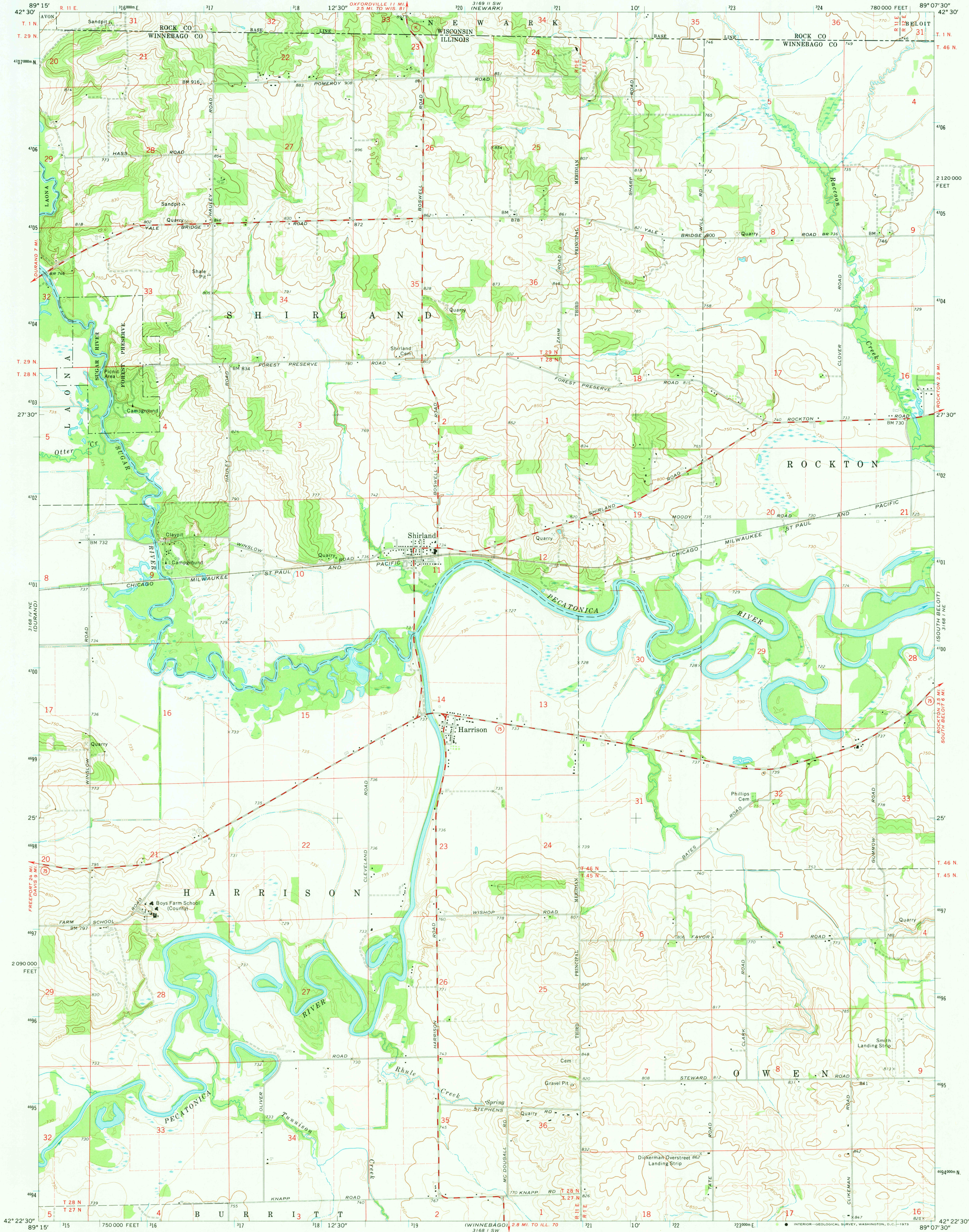


UNITED STATES  
DEPARTMENT OF THE INTERIOR  
GEOLOGICAL SURVEY

SHIRLAND QUADRANGLE  
ILLINOIS-WISCONSIN  
7.5 MINUTE SERIES (TOPOGRAPHIC)  
NW 1/4 ROCKFORD 15' QUADRANGLE



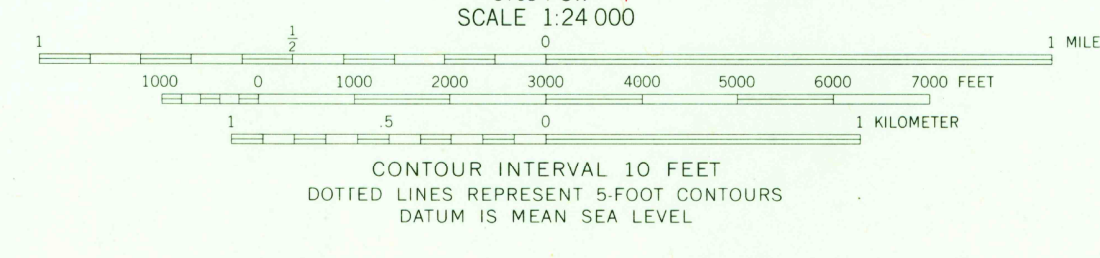
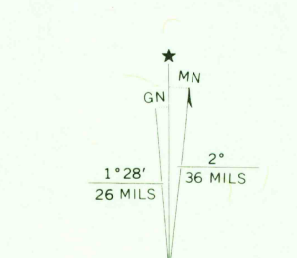
Maped, edited, and published by the Geological Survey  
Control by USGS and USC&GS

Topography by photogrammetric methods from aerial  
photographs taken 1970. Field checked 1971

Projection and 10,000-foot grid ticks: Illinois coordinate  
system, west zone (transverse Mercator)

1000-meter Universal Transverse Mercator grid ticks,  
zone 16, shown in blue. 1927 North American datum

Fine red dashed lines indicate selected fence and field lines where  
generally visible on aerial photographs. This information is unchecked



THIS MAP COMPLIES WITH NATIONAL MAP ACCURACY STANDARDS  
FOR SALE BY U.S. GEOLOGICAL SURVEY, WASHINGTON, D.C. 20242.  
STATE GEOLOGICAL SURVEY, URBANA, ILLINOIS 61801.  
AND WISCONSIN GEOLOGICAL AND NATURAL HISTORY SURVEY, MADISON, WISCONSIN 53706  
A FOLDER DESCRIBING TOPOGRAPHIC MAPS AND SYMBOLS IS AVAILABLE ON REQUEST

ROAD CLASSIFICATION  
Primary highway, hard surface  
Secondary highway, hard surface  
Unimproved road  
Interstate Route  
U.S. Route  
State Route

SEP 10 1973  
SHIRLAND, ILL.-WIS.  
NW 1/4 ROCKFORD 15' QUADRANGLE  
N4222.5-W8907.5/7.5

1971

AMS 3168 1 NW-SERIES V865

3315