

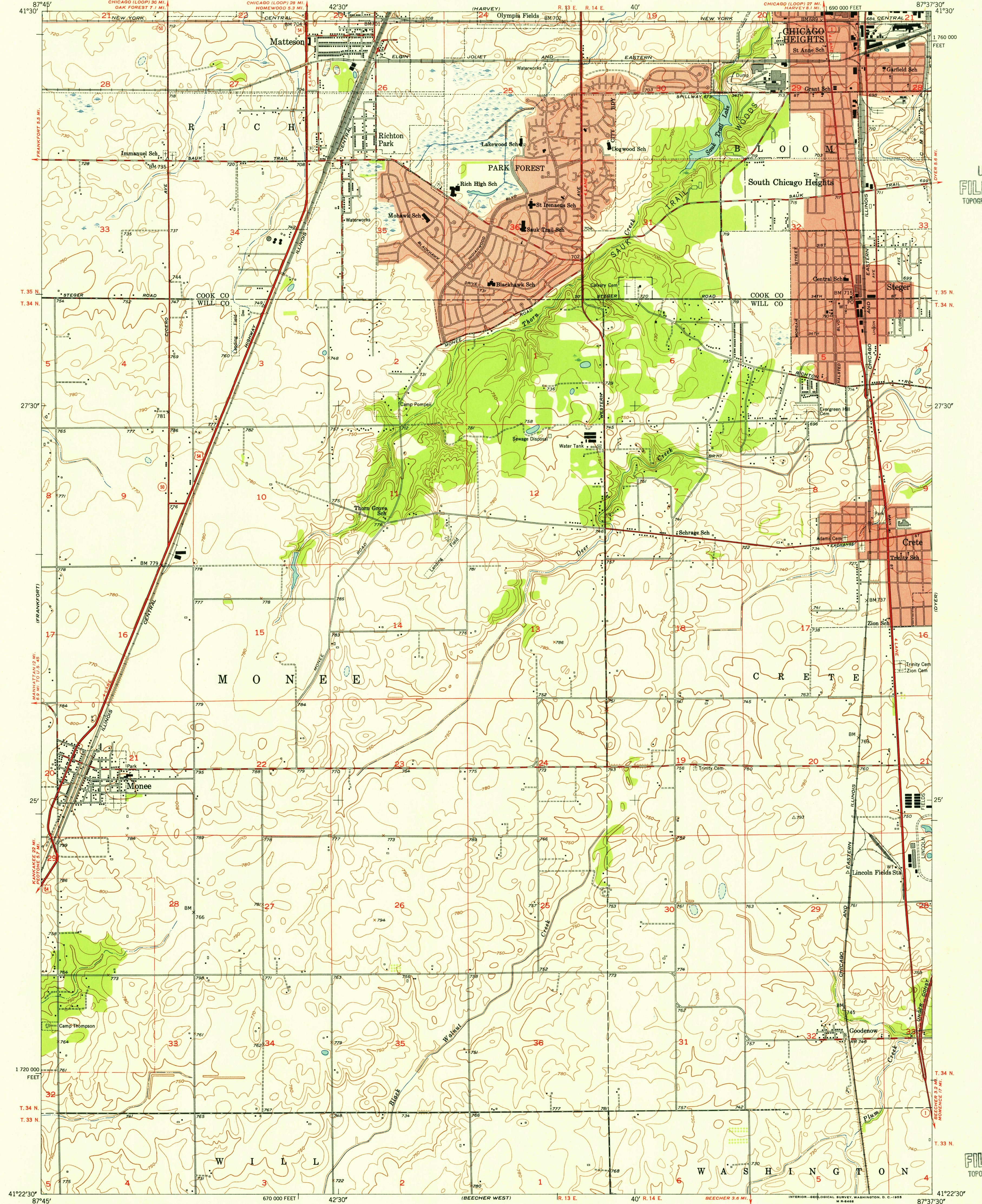
UNITED STATES  
DEPARTMENT OF THE INTERIOR  
GEOLOGICAL SURVEY

STATE OF ILLINOIS  
DEPARTMENT OF REGISTRATION AND EDUCATION  
GEOLOGICAL SURVEY DIVISION

STEEGER QUADRANGLE  
ILLINOIS  
7.5 MINUTE SERIES (TOPOGRAPHIC)  
NW/4 CRETE 15' QUADRANGLE

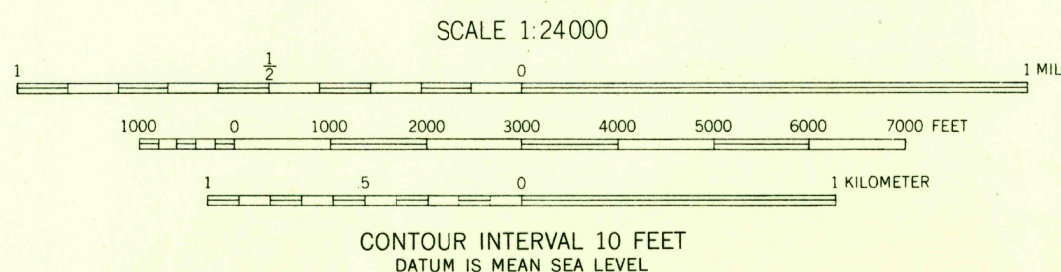
U.S.G.S.  
FILE COPY  
TOPOGRAPHIC DIVISION

U.S.G.S.  
FILE COPY  
TOPOGRAPHIC DIVISION



Mapped, edited, and published by the Geological Survey  
Control by USGS, USC&GS and Cook County Highway Department  
Culture and drainage in part compiled from aerial photographs  
taken 1939. Topography by plane-table surveys 1946  
Revised 1953  
Polyconic projection. 1927 North American datum  
10,000-foot grid based on Illinois coordinate system,  
east zone  
Red tint indicates areas in which only  
landmark buildings are shown

TRUE NORTH  
MAGNETIC NORTH  
APPROXIMATE MEAN  
DECLINATION, 1953



ROAD CLASSIFICATION  
Heavy-duty 4 LANE 16 LANE Light-duty  
Medium-duty 4 LANE 16 LANE Unimproved dirt  
U. S. Route State Route

STEEGER, ILL.  
NW/4 CRETE 15' QUADRANGLE  
N4122.5-W8737.5/7.5  
1953

THIS MAP COMPLIES WITH NATIONAL MAP ACCURACY STANDARDS  
FOR SALE BY U. S. GEOLOGICAL SURVEY, WASHINGTON 25, D. C.  
AND BY THE STATE GEOLOGICAL SURVEY, URBANA, ILLINOIS  
A FOLDER DESCRIBING TOPOGRAPHIC MAPS AND SYMBOLS IS AVAILABLE ON REQUEST

APR 14 1955