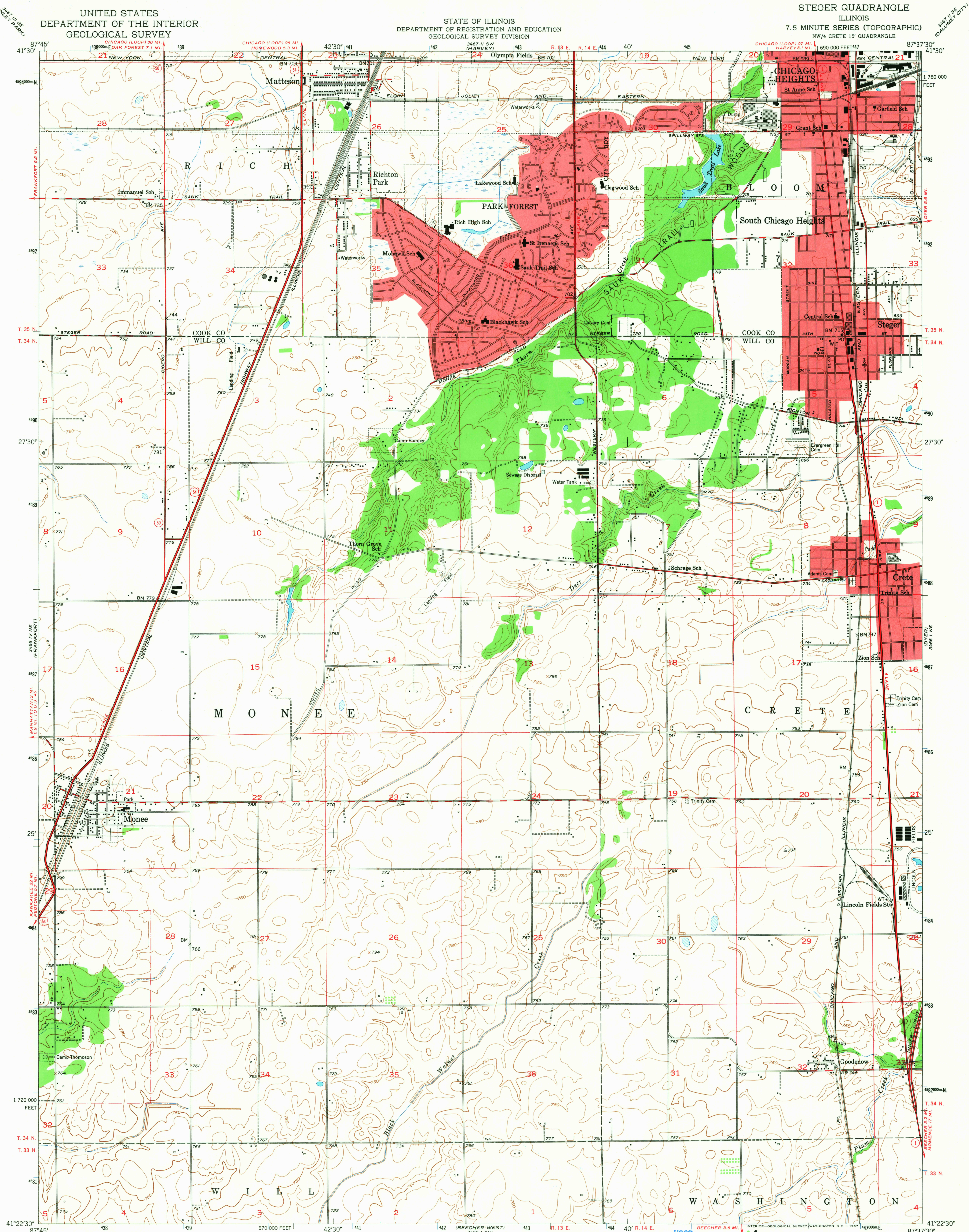


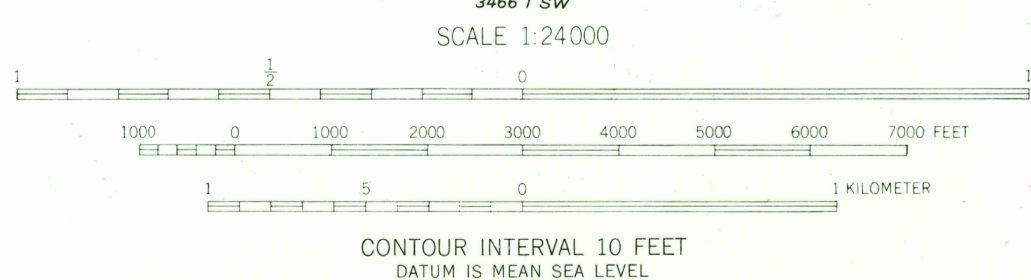
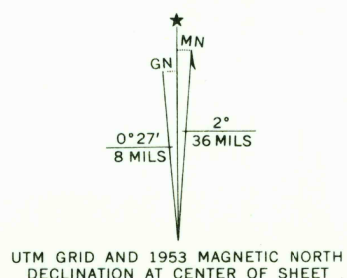
UNITED STATES
DEPARTMENT OF THE INTERIOR
GEOLOGICAL SURVEY

STATE OF ILLINOIS
DEPARTMENT OF REGISTRATION AND EDUCATION
GEOLOGICAL SURVEY DIVISION

STEEGER QUADRANGLE
ILLINOIS
7.5 MINUTE SERIES (TOPOGRAPHIC)
NW/4 CRETE 15' QUADRANGLE

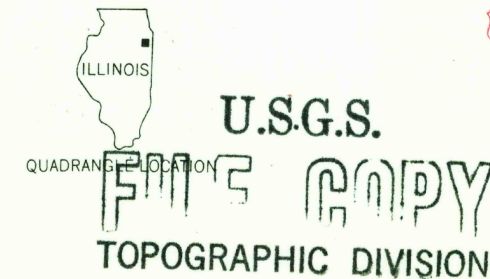


Mapped, edited, and published by the Geological Survey
Control by USGS, USCGS and Cook County Highway Department
Culture and drainage in part compiled from aerial photographs
taken 1939. Topography by plane-table surveys 1946
Revised 1953
Polyconic projection. 1927 North American datum
10,000-foot grid based on Illinois coordinate system,
east zone
Red tint indicates areas in which only
landmark buildings are shown
1000-meter Universal Transverse Mercator grid ticks,
zone 16, shown in blue



THIS MAP COMPLIES WITH NATIONAL MAP ACCURACY STANDARDS
FOR SALE BY U. S. GEOLOGICAL SURVEY, WASHINGTON, D. C. 20242
AND BY THE STATE GEOLOGICAL SURVEY, URBANA, ILLINOIS 61801
A FOLDER DESCRIBING TOPOGRAPHIC MAPS AND SYMBOLS IS AVAILABLE ON REQUEST

USGS
Historical File
Topographic Division



ROAD CLASSIFICATION
Heavy-duty 4 LANE 6 LANE Light-duty
Medium-duty 4 LANE 6 LANE Unimproved dirt
U. S. Route State Route

STEEGER, ILL.
NW/4 CRETE 15' QUADRANGLE
N4122.5-W8737.5/7.5

1953
AMS 3466 I NW-SERIES V853

2145
OCT 6 1967