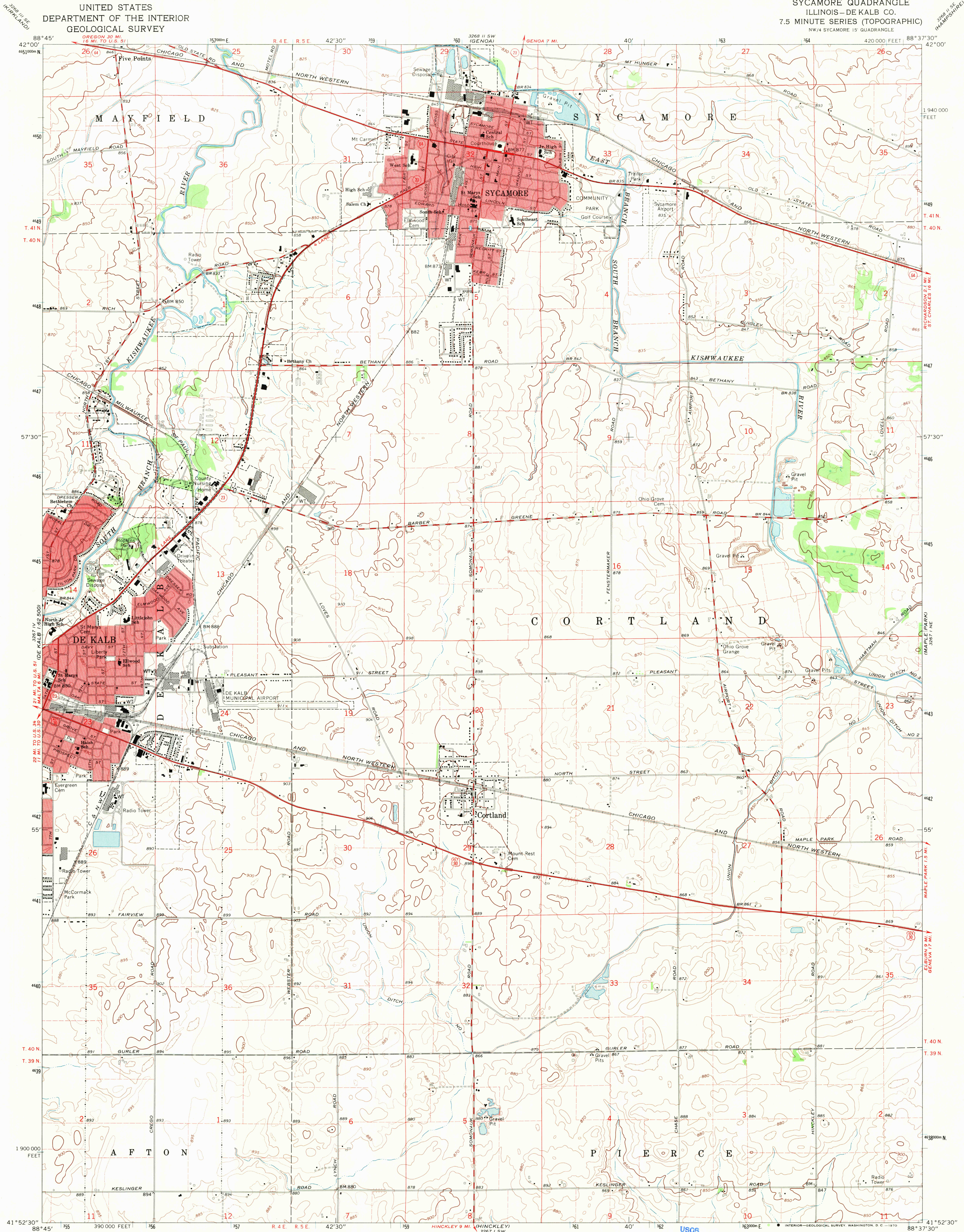


UNITED STATES
DEPARTMENT OF THE INTERIOR
GEOLOGICAL SURVEY

SYCAMORE QUADRANGLE
ILLINOIS—DE KALB CO.
7.5 MINUTE SERIES (TOPOGRAPHIC)
NW/4 SYCAMORE 15' QUADRANGLE



Mapped, edited, and published by the Geological Survey

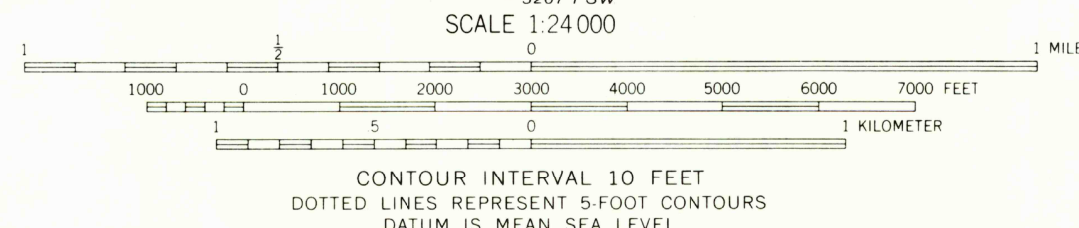
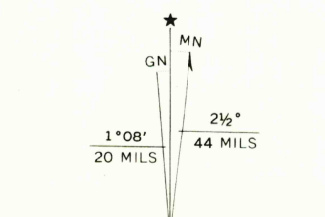
Control by USGS and US&GS

Topography by photogrammetric methods from aerial
photographs taken 1965. Field checked 1968

Polyconic projection. 1927 North American datum
10,000-foot grid based on Illinois coordinate system, east zone
1000-meter Universal Transverse Mercator grid ticks,
zone 16, shown in blue

Red tint indicates areas in which only landmark buildings are shown

Fine red dashed lines indicate selected fence and field lines where
generally visible on aerial photographs. This information is unchecked



THIS MAP COMPLIES WITH NATIONAL MAP ACCURACY STANDARDS
FOR SALE BY U. S. GEOLOGICAL SURVEY, WASHINGTON, D. C. 20242
AND BY THE STATE GEOLOGICAL SURVEY, URBANA, ILLINOIS 61801
A FOLDER DESCRIBING TOPOGRAPHIC MAPS AND SYMBOLS IS AVAILABLE ON REQUEST

USGS
Historical File
Topographic Division



ROAD CLASSIFICATION	
Primary highway, all weather, hard surface	Light-duty road, all weather, improved surface
Secondary highway, all weather, hard surface	Unimproved road, fair or dry weather
U. S. Route	State Route

U.S.G.S.
FILE COPY
TOPOGRAPHIC DIVISION

SYCAMORE, ILL.
NW/4 SYCAMORE 15' QUADRANGLE
N4152.5-W8837.5/7.5

1968

AMS 3267 1 NW-SERIES V863

SEP 15 1970

2570