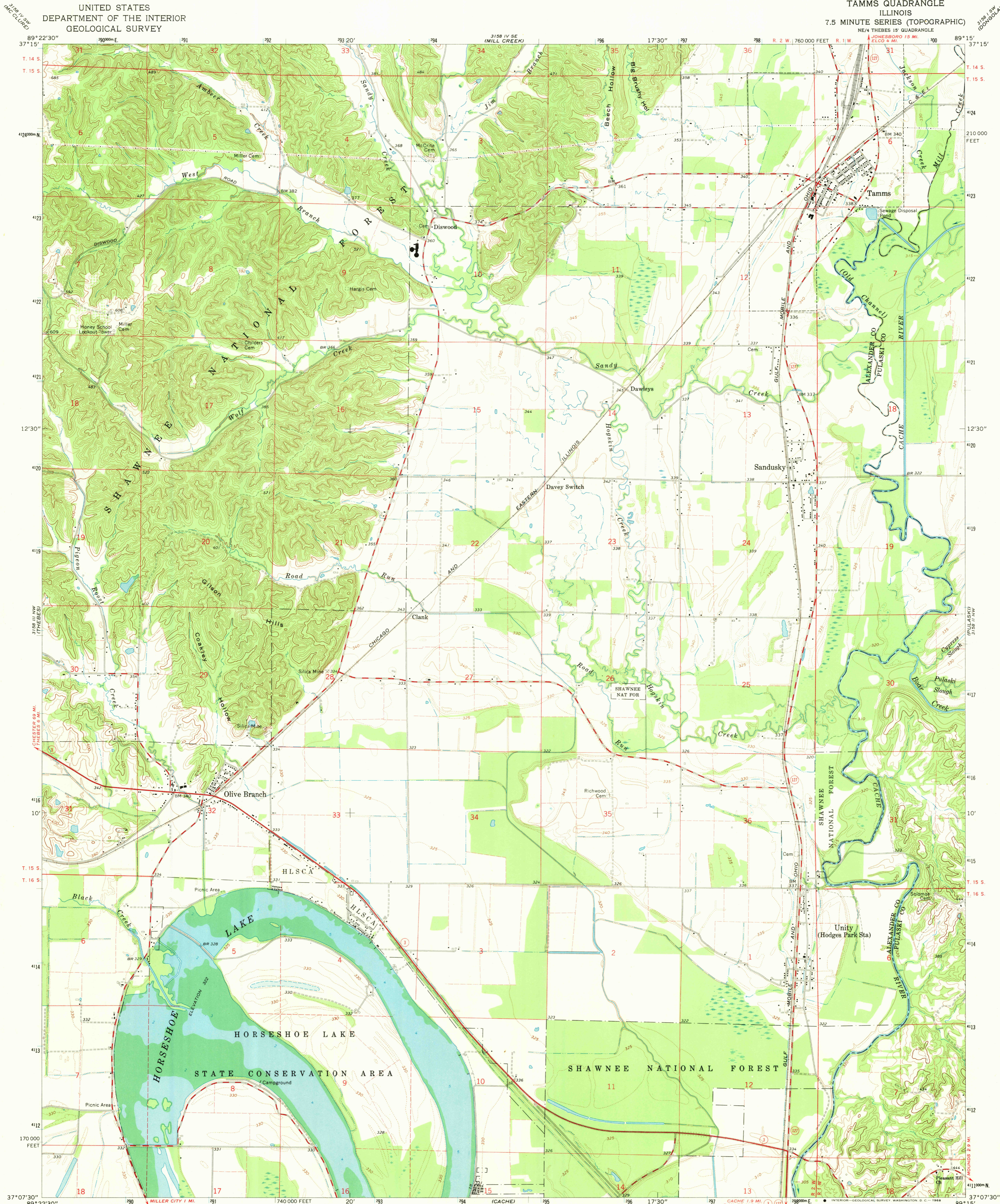


UNITED STATES
DEPARTMENT OF THE INTERIOR
GEOLOGICAL SURVEY

TAMMS QUADRANGLE
ILLINOIS
7.5 MINUTE SERIES (TOPOGRAPHIC)



Mapped, edited, and published by the Geological Survey

Control by USGS and USC&GS

Topography by photogrammetric methods from aerial photographs taken 1965 and planetable surveys 1967

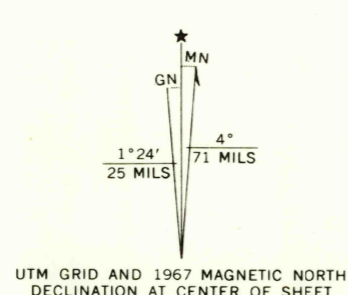
Soundings compiled from charts furnished by Illinois Department of Conservation

Polyconic projection, 1927 North American datum

10,000-foot grid based on Illinois coordinate system, west zone

1000-meter Universal Transverse Mercator grid ticks, zone 16, shown in blue

Fine red dashed lines indicate selected fence and field lines where generally visible on aerial photographs. This information is unchecked



SCALE 1:24,000

CONTOUR INTERVAL 20 FEET

DOTTED LINES REPRESENT 5-FOOT CONTOURS

DATUM IS MEAN SEA LEVEL

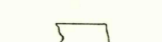
THIS MAP COMPLIES WITH NATIONAL MAP ACCURACY STANDARDS

FOR SALE BY U. S. GEOLOGICAL SURVEY, WASHINGTON, D. C. 20242

AND BY THE STATE GEOLOGICAL SURVEY, URBANA, ILLINOIS 61801

A FOLDER DESCRIBING TOPOGRAPHIC MAPS AND SYMBOLS IS AVAILABLE ON REQUEST

USGS
Historical File
Topographic Division



QUADRANGLE LOCATION

ROAD CLASSIFICATION
Heavy-duty ——— Light-duty ———
Medium-duty ——— Unimproved dirt ———
State Route ———

U.S.G.S.
FILM COPY
TOPOGRAPHIC DIVISION

TAMMS, ILL.
NE/4 THEBES 15 QUADRANGLE
N3707.5-W8915/7.5
1967
AMS 3158 III NE-SERIES V863

2750
MAY 2 1969