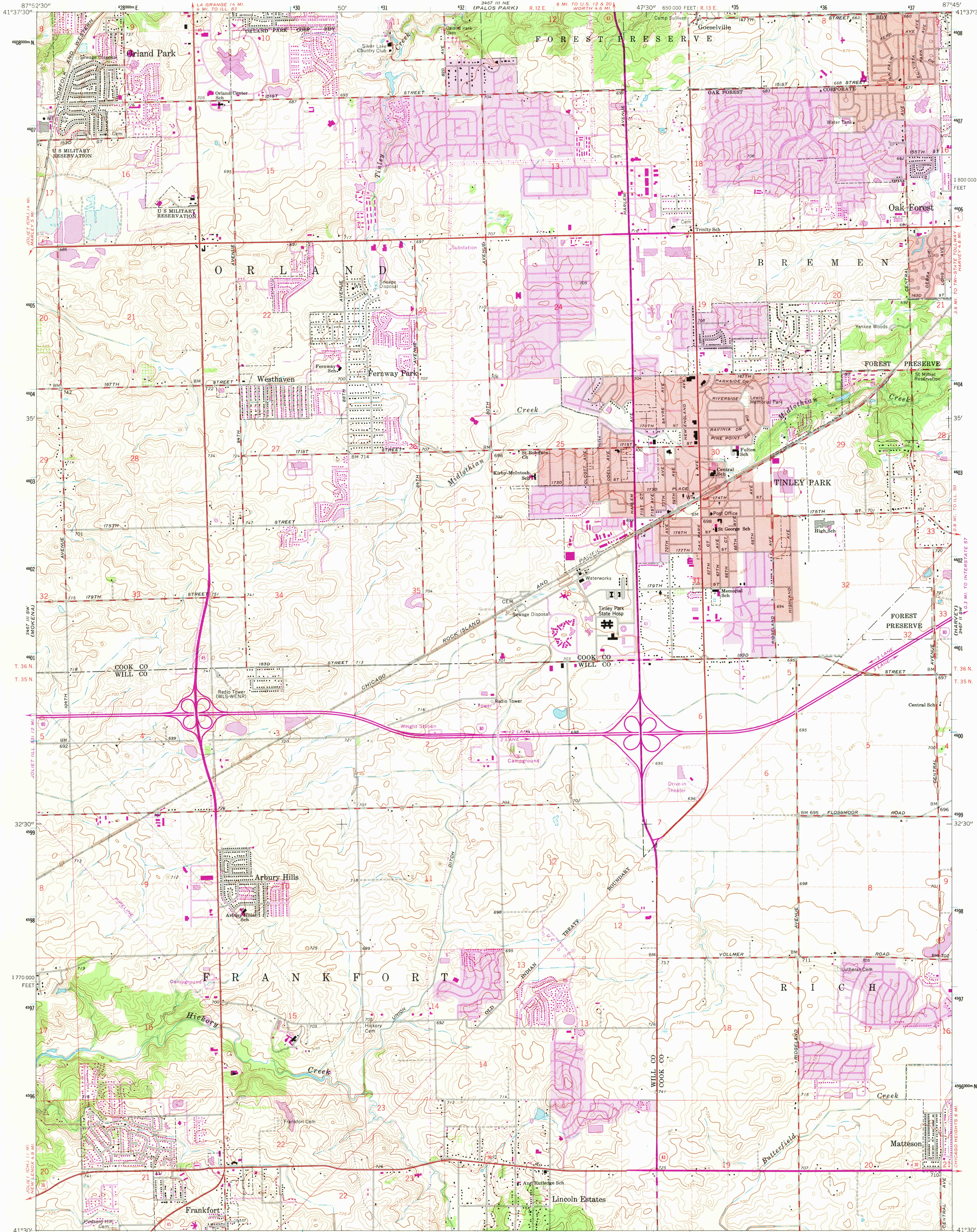
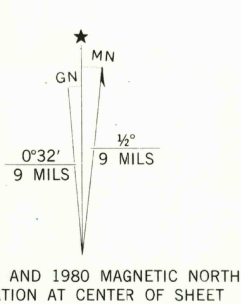


UNITED STATES
DEPARTMENT OF THE INTERIOR
GEOLOGICAL SURVEY

TINLEY PARK QUADRANGLE
ILLINOIS
7.5 MINUTE SERIES (TOPOGRAPHIC)



Mapped, edited, and published by the Geological Survey in cooperation with State of Illinois Geological Survey
Control by USGS, USC&GS, and Cook County Highway Department
Planimetry by photogrammetric methods from aerial photographs taken 1962. Topography by planimetric surveys 1926. Revised 1963
Polyconic projection. 1927 North American datum
10,000-foot grid based on Illinois coordinate system, east zone
1000-meter Universal Transverse Mercator grid ticks, zone 16, shown in blue
Red tint indicates areas in which only landmark buildings are shown
To place on the predicted North American Datum 1983 move the projection lines 2 meters north and 7 meters east as shown by dashed corner ticks
There may be private inholdings within the boundaries of the National or State reservations shown on this map



SCALE 1:24,000
CONTOUR INTERVAL 5 FEET
NATIONAL GEODETIC VERTICAL DATUM OF 1929

ROAD CLASSIFICATION
Heavy-duty ——— Light-duty ———
Medium-duty ——— Unimproved dirt ———
Interstate Route ——— U.S. Route ——— State Route ———



THIS MAP COMPLIES WITH NATIONAL MAP ACCURACY STANDARDS
FOR SALE BY U.S. GEOLOGICAL SURVEY, RESTON, VIRGINIA 22092
AND BY THE STATE GEOLOGICAL SURVEY, URBANA, ILLINOIS 61801
A FOLDER DESCRIBING TOPOGRAPHIC MAPS AND SYMBOLS IS AVAILABLE ON REQUEST

Revisions shown in purple compiled from aerial photographs taken 1973 and 1978. Map edited 1980
This information not field checked
Purple tint indicates extension of urban area

TINLEY PARK, ILL.
N4130—W8745/7.5
1963
PHOTOREVISED 1973 AND 1980
DMA 3467 III SE—SERIES V863

USGS
Historical File
National Mapping

MAY 5 1981
2400