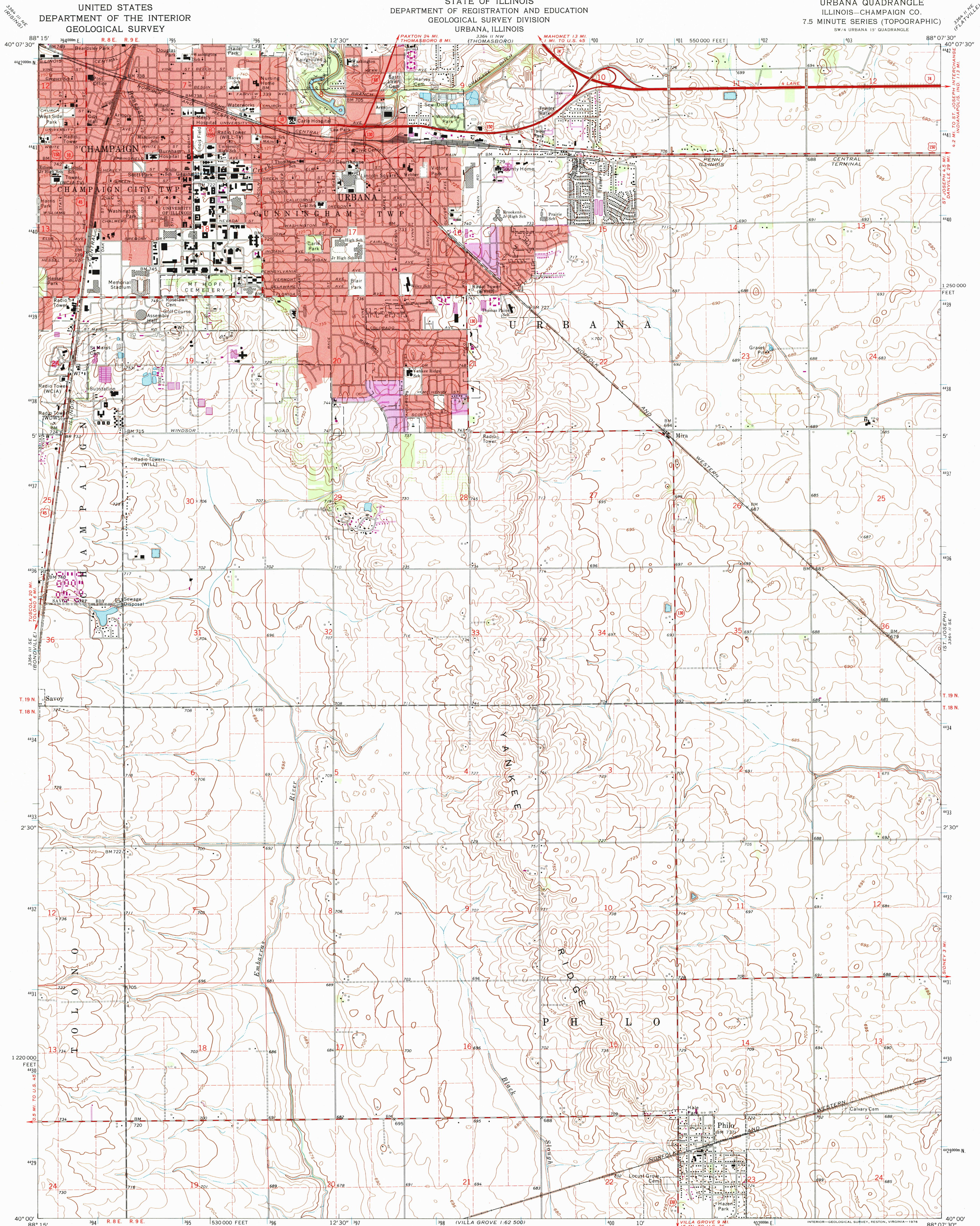


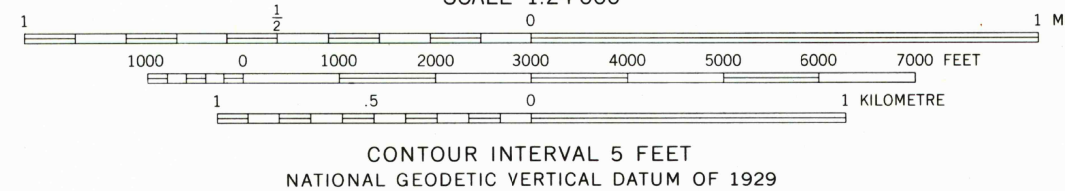
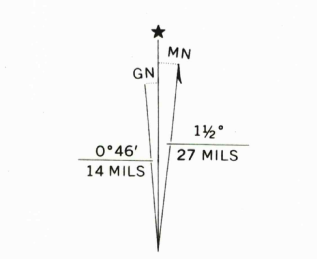
UNITED STATES
DEPARTMENT OF THE INTERIOR
GEOLOGICAL SURVEY

STATE OF ILLINOIS
DEPARTMENT OF REGISTRATION AND EDUCATION
GEOLOGICAL SURVEY DIVISION
URBANA, ILLINOIS

URBANA QUADRANGLE
ILLINOIS—CHAMPAIGN CO.
7.5 MINUTE SERIES (TOPOGRAPHIC)
SW/4 URBANA 15' QUADRANGLE



Mapped, edited, and published by the Geological Survey
Control by USGS and USC&GS
Planimetry by photogrammetric methods from aerial photographs
taken 1955. Topography by planimetric surveys 1949-50 and 1957
Revised from aerial photographs taken 1969. Field checked 1970
Polyconic projection. 1927 North American datum
10,000-foot grid based on Illinois coordinate system, east zone
1000-metre Universal Transverse Mercator grid ticks,
zone 16, shown in blue
Red tint indicates area in which only landmark buildings are shown
Fine red dashed lines indicate selected fence and field lines where
generally visible on aerial photographs. This information is unchecked
Revisions shown in purple compiled from aerial photographs
taken 1975. This information not field checked
Purple tint indicates extension of urban areas



THIS MAP COMPLIES WITH NATIONAL MAP ACCURACY STANDARDS
FOR SALE BY U. S. GEOLOGICAL SURVEY, RESTON, VIRGINIA 22092
AND BY THE STATE GEOLOGICAL SURVEY, URBANA, ILLINOIS 61801
A FOLDER DESCRIBING TOPOGRAPHIC MAPS AND SYMBOLS IS AVAILABLE ON REQUEST



ROAD CLASSIFICATION
Primary highway, all weather, hard surface
Secondary highway, all weather, hard surface
Light-duty road, all weather, improved surface
Unimproved road, fair or dry weather
Interstate Route
U. S. Route
State Route



URBANA, ILL.
SW/4 URBANA 15' QUADRANGLE
N4000—W8807.5/7.5
1970
PHOTOREVISED 1975
AMS 3364 II SW—SERIES V863

