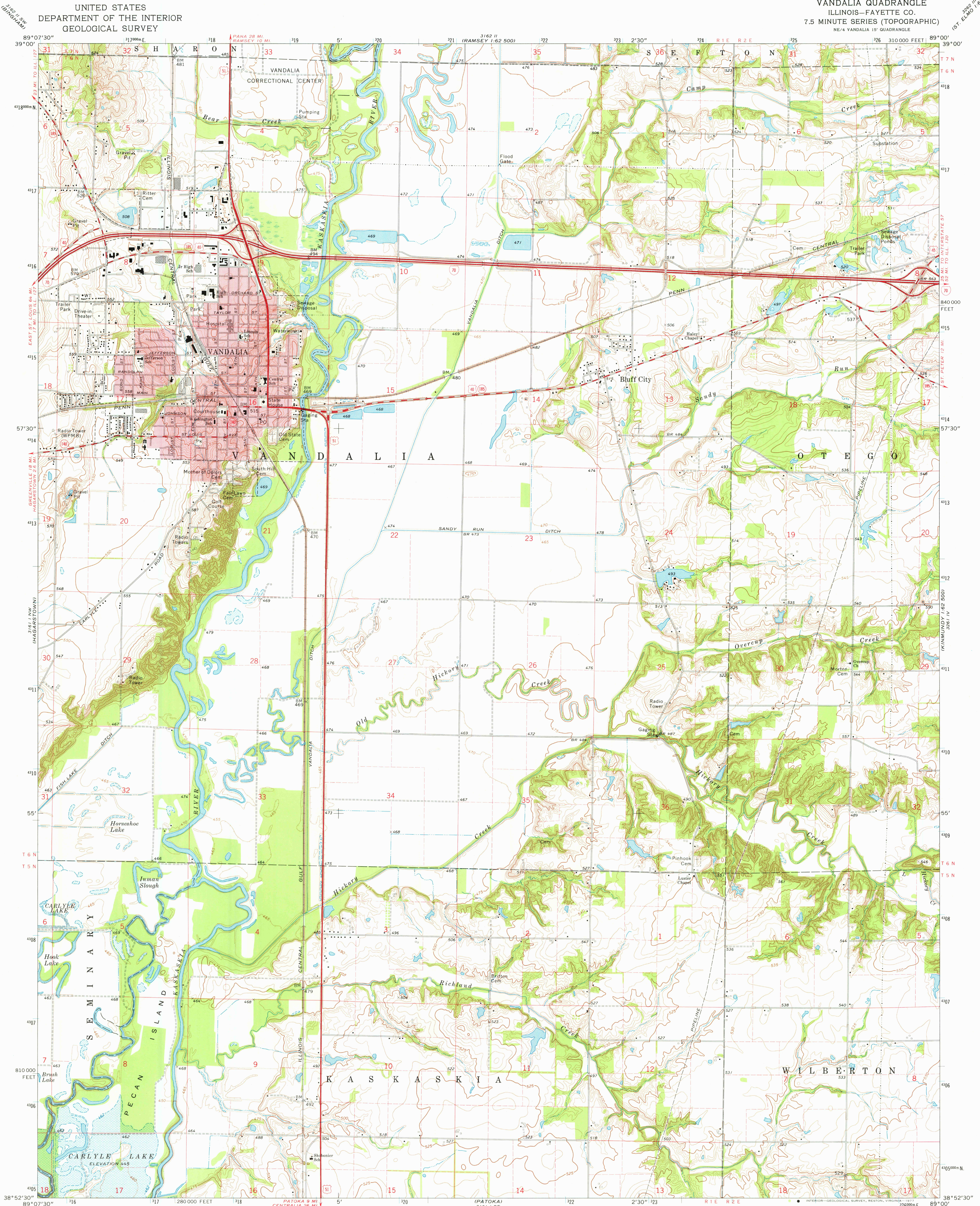


UNITED STATES  
DEPARTMENT OF THE INTERIOR  
GEOLOGICAL SURVEY

VANDALIA QUADRANGLE  
ILLINOIS—FAYETTE CO.  
7.5 MINUTE SERIES (TOPOGRAPHIC)  
NE 1/4 VANDALIA 15' QUADRANGLE



Mapped, edited, and published by the Geological Survey

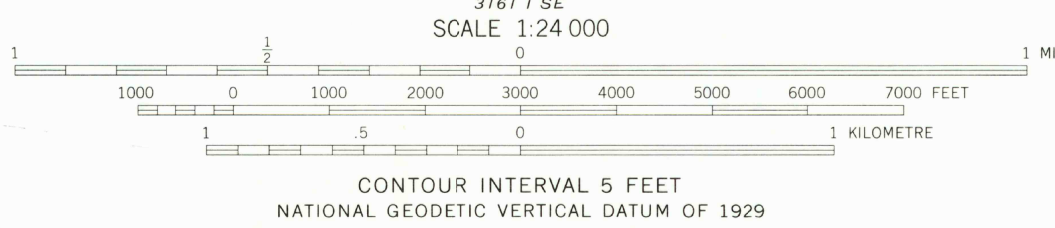
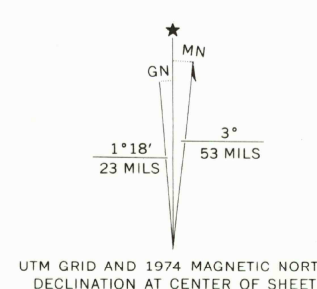
Control by USGS and NOS/NOAA

Topography by photogrammetric methods from aerial  
photographs taken 1973. Field checked 1974

Projection and 10,000-foot grid ticks: Illinois coordinate  
system, east zone (transverse Mercator)  
1000-metre Universal Transverse Mercator grid ticks,  
zone 16, shown in blue. 1927 North American datum

Red tint indicates areas in which only landmark buildings are shown  
Areas covered by dashed light-blue pattern  
are subject to controlled inundation

Fine red dashed lines indicate selected fence and field lines where  
generally visible on aerial photographs. This information is unchecked



THIS MAP COMPLIES WITH NATIONAL MAP ACCURACY STANDARDS  
FOR SALE BY U. S. GEOLOGICAL SURVEY, RESTON, VIRGINIA 22092  
AND BY THE STATE GEOLOGICAL SURVEY, URBANA, ILLINOIS 61801  
A FOLDER DESCRIBING TOPOGRAPHIC MAPS AND SYMBOLS IS AVAILABLE ON REQUEST



| ROAD CLASSIFICATION                |  |
|------------------------------------|--|
| Primary highway,<br>hard surface   | Light-duty road, hard or<br>improved surface |
| Secondary highway,<br>hard surface | Unimproved road                              |
| Interstate Route                   | U. S. Route                                  |
|                                    | State Route                                  |

USGS  
Historical File  
Topographic Division

VANDALIA, ILL.  
NE 1/4 VANDALIA 15' QUADRANGLE  
N3852.5—W8900/7.5

1974  
AMS 3161 1 NE—SERIES V863

JUN 13 1977  
3300