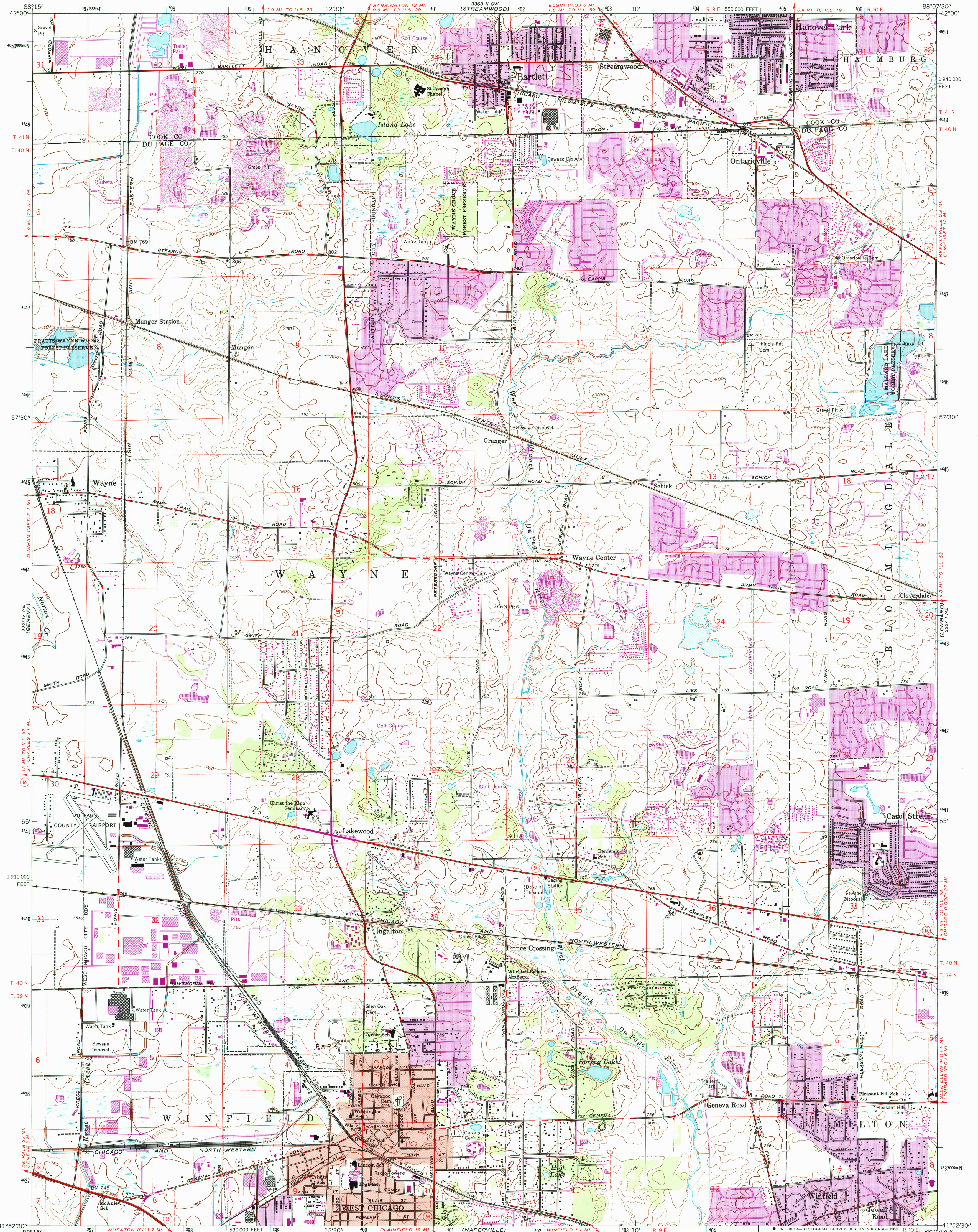


UNITED STATES  
DEPARTMENT OF THE INTERIOR  
GEOLOGICAL SURVEY

WEST CHICAGO QUADRANGLE  
ILLINOIS  
7.5 MINUTE SERIES (TOPOGRAPHIC)  
NW/4 WHEATON 15' QUADRANGLE



Mapped, edited, and published by the Geological Survey  
Control by USGS and USC&GS

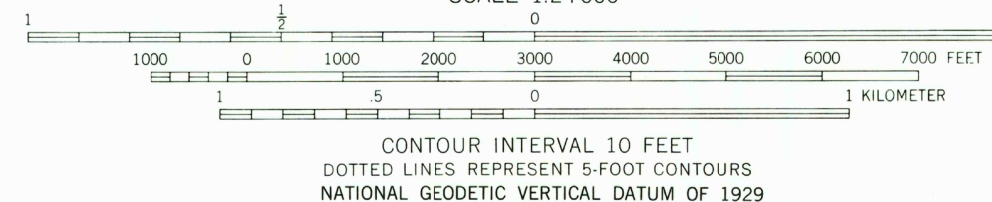
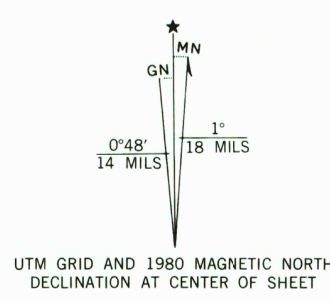
Topography by photogrammetric methods from aerial photographs  
taken 1952 and planetable surveys 1953. Revised from aerial  
photographs taken 1962. Field checked 1962

Polyconic projection. 1927 North American datum  
10,000-foot grid based on Illinois coordinate system, east zone  
1000-meter Universal Transverse Mercator grid ticks,  
zone 16, shown in blue

Red tint indicates area in which only landmark buildings are shown

To place on the predicted North American Datum 1983  
move the projection lines 2 meters north and  
6 meters east as shown by dashed corner ticks

There may be private inholdings within the boundaries of  
the National or State reservations shown on this map



ROAD CLASSIFICATION  
Heavy-duty ——— Light-duty ———  
Medium-duty ——— Unimproved dirt ———  
U.S. Route ——— State Route ———

WEST CHICAGO, ILL.  
NW/4 WHEATON 15' QUADRANGLE  
41088-H2-TF-024

1962  
PHOTOREVISED 1972 AND 1980  
DMA 3367 I NW-SERIES 3863

Revisions shown in purple compiled from aerial photographs  
taken 1972 and 1978. Map edited 1980  
This information not field checked  
Purple tint indicates extension of urban area

REC'D FILE COPY

SEP 14 1988

U.S. GEOLOGICAL SURVEY