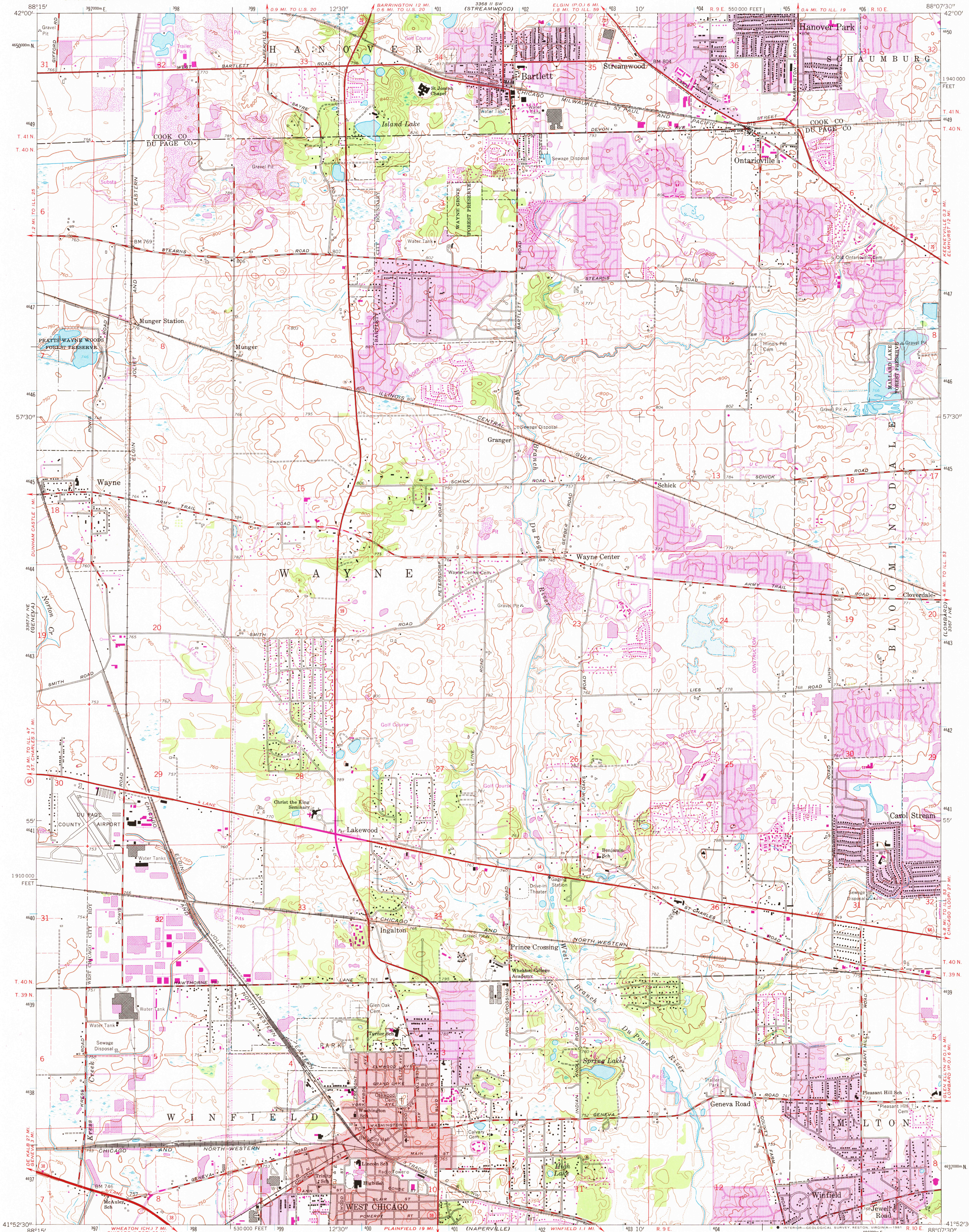


UNITED STATES
DEPARTMENT OF THE INTERIOR
GEOLOGICAL SURVEY

WEST CHICAGO QUADRANGLE
ILLINOIS
7.5 MINUTE SERIES (TOPOGRAPHIC)
NW/4 WHEATON 15' QUADRANGLE



Mapped, edited, and published by the Geological Survey
Control by USGS and USC&GS
Topography by photogrammetric methods from aerial photographs
taken 1952 and planimetric surveys 1953. Revised from aerial
photographs taken 1962. Field checked 1962
Polyconic projection. 1927 North American datum
10,000 foot grid based on Illinois coordinate system, east zone
1000-meter Universal Transverse Mercator grid ticks,
zone 16, shown in blue
Red tint indicates area in which only landmark buildings are shown
To place on the predicted North American Datum 1983
move the projection lines 2 meters north and
6 meters east as shown by dashed corner ticks
There may be private inholdings within the boundaries of
the National or State reservations shown on this map

SCALE 1:24,000
1 0 1000 2000 3000 4000 5000 6000 7000 FEET
1 0 1 2 3 4 5 6 7 8 9 10 KILOMETER
CONTOUR INTERVAL 10 FEET
DOTTED LINES REPRESENT 5-FOOT CONTOURS
NATIONAL GEODETIC VERTICAL DATUM OF 1929

Revisions shown in purple compiled from aerial photographs
taken 1972 and 1978. Map edited 1980
This information not field checked
Purple tint indicates extension of urban area

ROAD CLASSIFICATION
Heavy-duty ——— Light-duty ———
Medium-duty ——— Unimproved dirt ———
U.S. Route ——— State Route ———



QUADRANGLE LOCATION

WEST CHICAGO, ILL.
NW/4 WHEATON 15' QUADRANGLE
N4152.5—W8807.5/7.5

1962
PHOTOREVISED 1972 AND 1980
DMA 3367 1 NW-SERIES V863

USGS
National File Div.
MAY 1 1981
2350