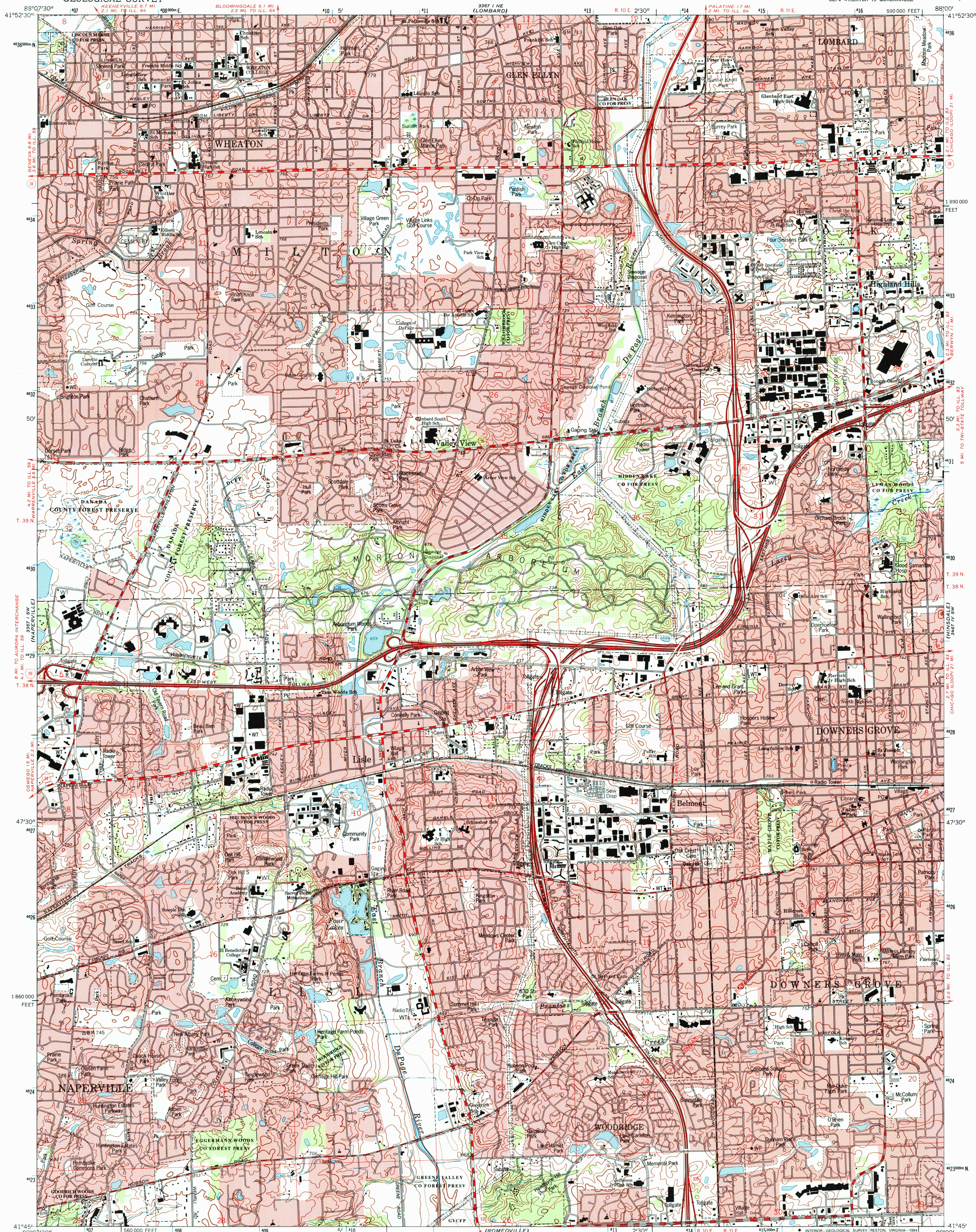


UNITED STATES
DEPARTMENT OF THE INTERIOR
GEOLOGICAL SURVEY

WHEATON QUADRANGLE
ILLINOIS-DU PAGE CO.
7.5 MINUTE SERIES (TOPOGRAPHIC)
SE/4 WHEATON 15' QUADRANGLE



Produced by the United States Geological Survey

Control by USGS and NOS/NOAA

Topography by photogrammetric methods from aerial photographs taken 1952. Field checked 1953-54. Revised from aerial photographs taken 1988. Field checked 1991. Map edited 1993

Projection and 10,000-foot grid ticks: Illinois coordinate system, east zone (transverse Mercator)
1000-meter Universal Transverse Mercator grid ticks, zone 16, shown in blue
1927 North American Datum (NAD 27)

North American Datum of 1983 (NAD 83) is shown by dashed corner ticks
The values of the shift between NAD 27 and NAD 83 for 7.5-minute intersections are given in USGS Bulletin 1875

Red tint indicates areas in which only landmark buildings are shown

SCALE 1:24,000

CONTOUR INTERVAL 10 FEET
DOTTED LINES REPRESENT 5-FOOT CONTOURS
NATIONAL GEODETIC VERTICAL DATUM OF 1929

COMPLIES WITH U.S. GEOLOGICAL SURVEY STANDARDS FOR SPATIAL ACCURACY-CLASS 2
FOR SALE BY U.S. GEOLOGICAL SURVEY, DENVER, COLORADO 80225, OR RESTON, VIRGINIA 22092
AND ILLINOIS GEOLOGICAL SURVEY, CHAMPAIGN, ILLINOIS 61820
A FOLDER DESCRIBING TOPOGRAPHIC MAPS AND SYMBOLS IS AVAILABLE ON REQUEST

ROAD CLASSIFICATION

Primary highway, hard surface
Secondary highway, hard surface
Interstate Route
U. S. Route
State Route
Light-duty road, hard or improved surface
Unimproved road



QUADRANGLE LOCATION

WHEATON, ILL.
SE/4 WHEATON 15' QUADRANGLE
41088-G1-TF-024

1993

DMA 3367 1 SE-SERIES V863

