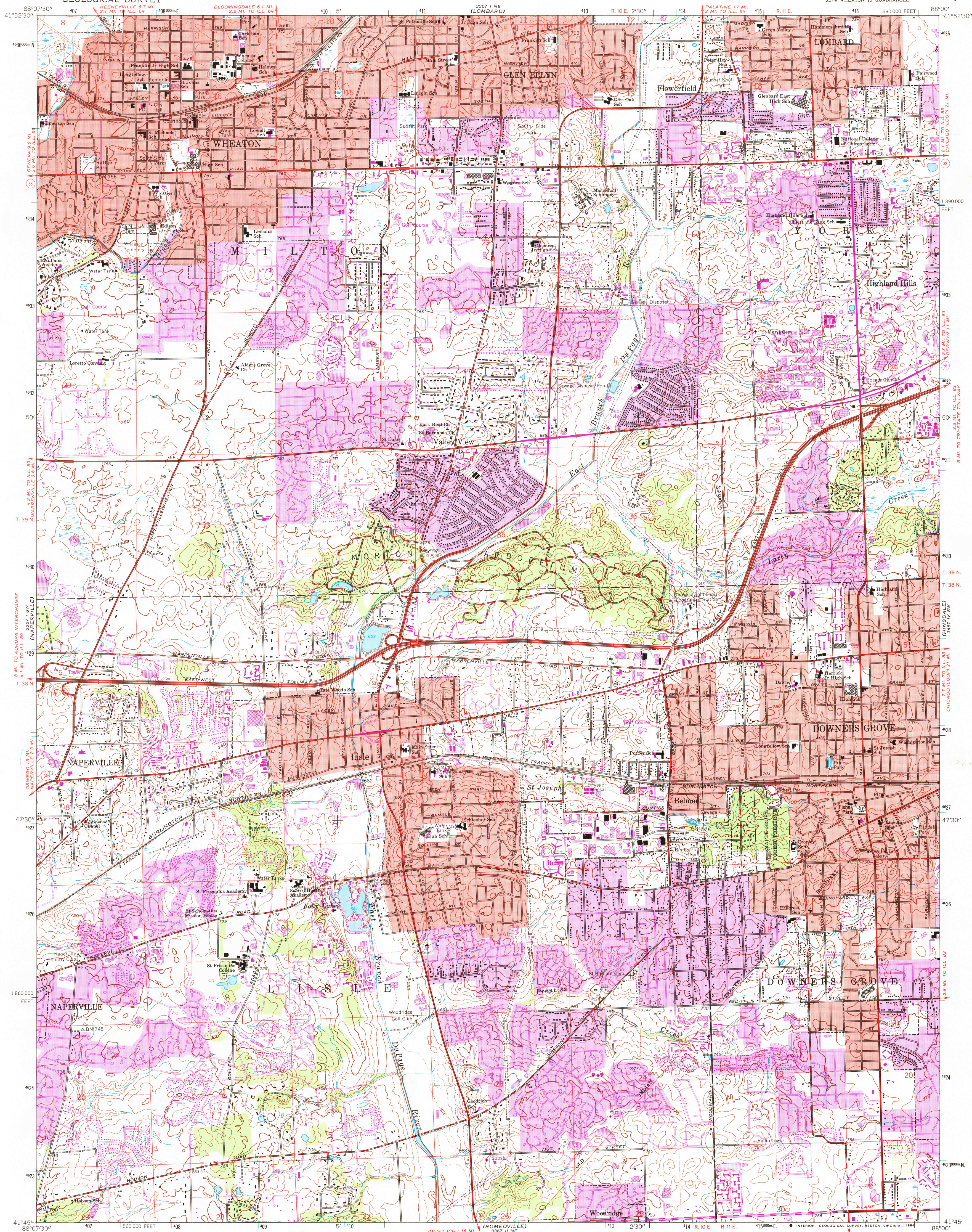


UNITED STATES  
DEPARTMENT OF THE INTERIOR  
GEOLOGICAL SURVEY

WHEATON QUADRANGLE  
ILLINOIS—DU PAGE CO.  
7.5 MINUTE SERIES (TOPOGRAPHIC)  
SE/4 WHEATON 15' QUADRANGLE



Maped, edited, and published by the Geological Survey

Control by USGS and USC&GS

Topography by photogrammetric methods from aerial photographs taken 1952. Field checked 1953-54. Revised from aerial photographs taken 1962. Field checked 1962

Polyconic projection. 1927 North American datum 10,000-foot grid based on Illinois coordinate system, east zone 1000-meter Universal Transverse Mercator grid ticks, zone 16, shown in blue

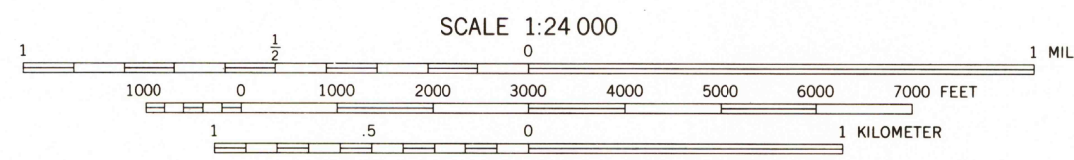
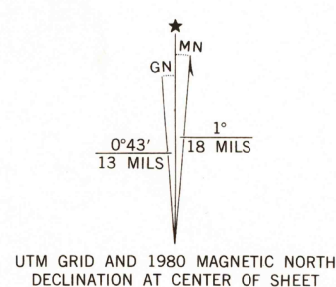
Red tint indicates areas in which only landmark buildings are shown

To place on the predicted North American Datum 1983 move the projection lines 2 meters north and

5 meters east as shown by dashed corner ticks

Revisions shown in purple compiled from aerial photographs taken 1972 and 1978. Map edited 1980. This information not field checked

Purple tint indicates extension of urban area



CONTOUR INTERVAL 10 FEET

DOTTED LINES REPRESENT 5-FOOT CONTOURS

NATIONAL GEODETIC VERTICAL DATUM OF 1929

THIS MAP COMPLIES WITH NATIONAL MAP ACCURACY STANDARDS  
FOR SALE BY U.S. GEOLOGICAL SURVEY, RESTON, VIRGINIA 22092  
AND ILLINOIS GEOLOGICAL SURVEY, CHAMPAIGN, ILLINOIS 61820  
A FOLDER DESCRIBING TOPOGRAPHIC MAPS AND SYMBOLS IS AVAILABLE ON REQUEST



QUADRANGLE LOCATION

RETURN TO:  
NMD HISTORICAL MAP ARCHIVES  
USGS NATIONAL CENTER, MS-522  
RESTON, VA 22092

ROAD CLASSIFICATION

- Heavy-duty
- Medium-duty
- Light-duty
- Unimproved dirt
- U.S. Route
- State Route

WHEATON, ILL.  
SE/4 WHEATON 15' QUADRANGLE  
N4145—W8800/7.5

1962  
PHOTOREVISED 1972 AND 1980  
DMA 3367 I SE-SERIES V863