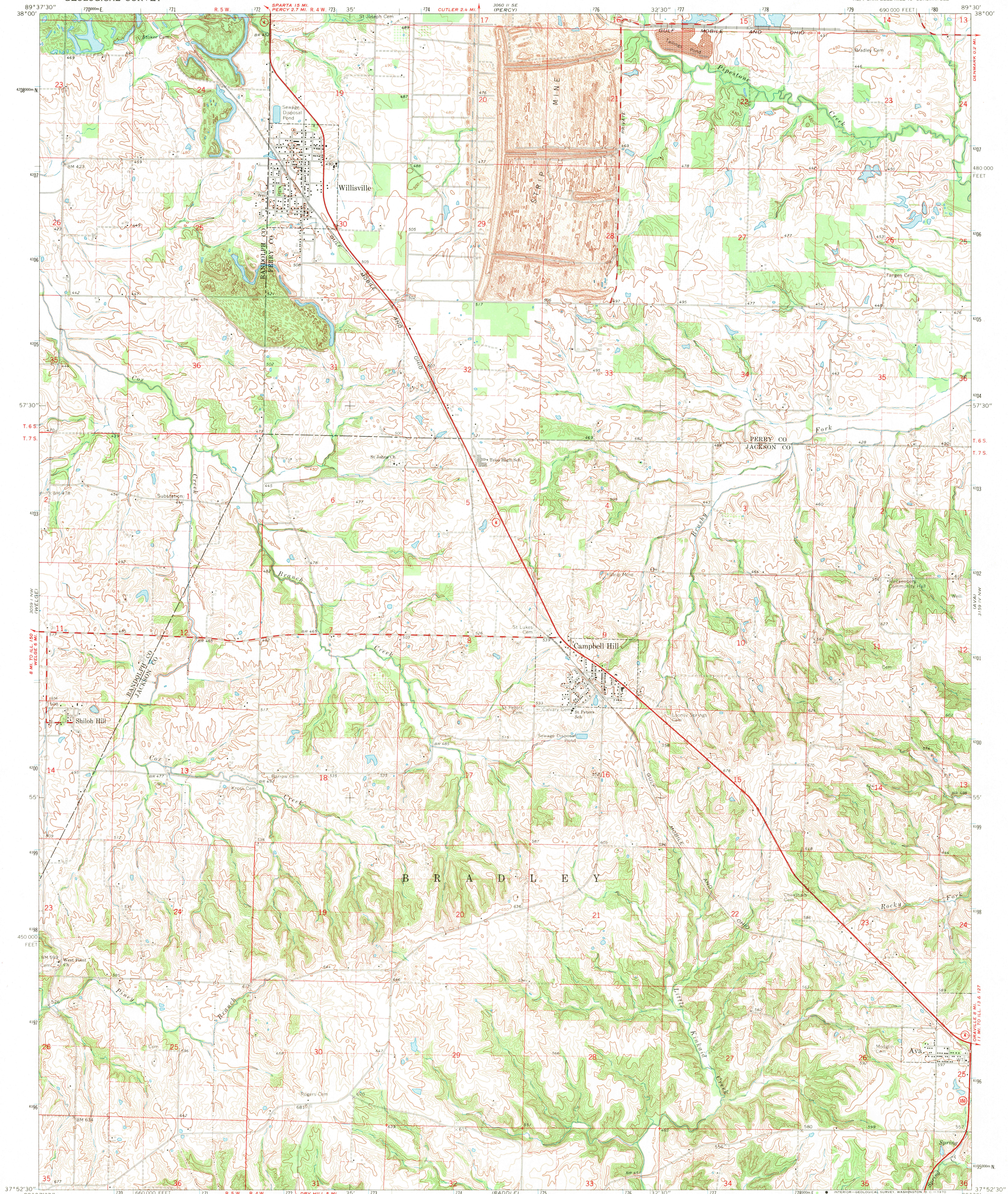


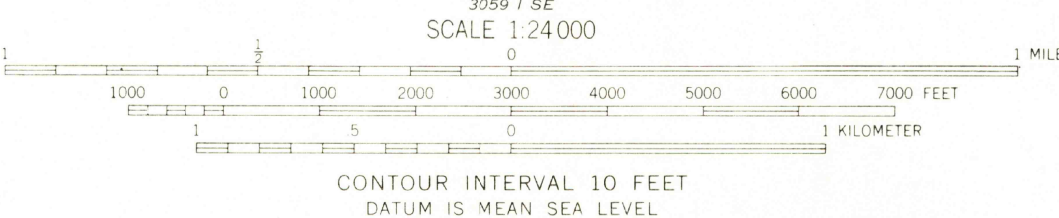
UNITED STATES
DEPARTMENT OF THE INTERIOR
GEOLOGICAL SURVEY

WILLISVILLE QUADRANGLE
ILLINOIS
7.5 MINUTE SERIES (TOPOGRAPHIC)
NE/4 CAMPBELL HILL 15' QUADRANGLE



Mapped, edited, and published by the Geological Survey
Control by USGS and USC&GS
Topography by photogrammetric methods from aerial
photographs taken 1965. Field checked 1968
Polyconic projection. 1927 North American datum
10,000-foot grid based on Illinois coordinate system, west zone
1000-meter Universal Transverse Mercator grid ticks,
zone 16, shown in blue
Fine red dashed lines indicate selected fence and field lines where
generally visible on aerial photographs. This information is unchecked

UTM GRID AND 1968 MAGNETIC NORTH
DECLINATION AT CENTER OF SHEET



USGS
Historical File
Topographic Division

U.S.G.S.
FILE COPY
TOPOGRAPHIC DIVISION

ROAD CLASSIFICATION
Heavy-duty ——— Light-duty ———
Medium-duty ——— Unimproved dirt ———
State Route

WILLISVILLE, ILL.
NE/4 CAMPBELL HILL 15' QUADRANGLE
N3752.5—W8930/7.5
1968
AMS 3059 I NE—SERIES W863

JUN 19 1970