

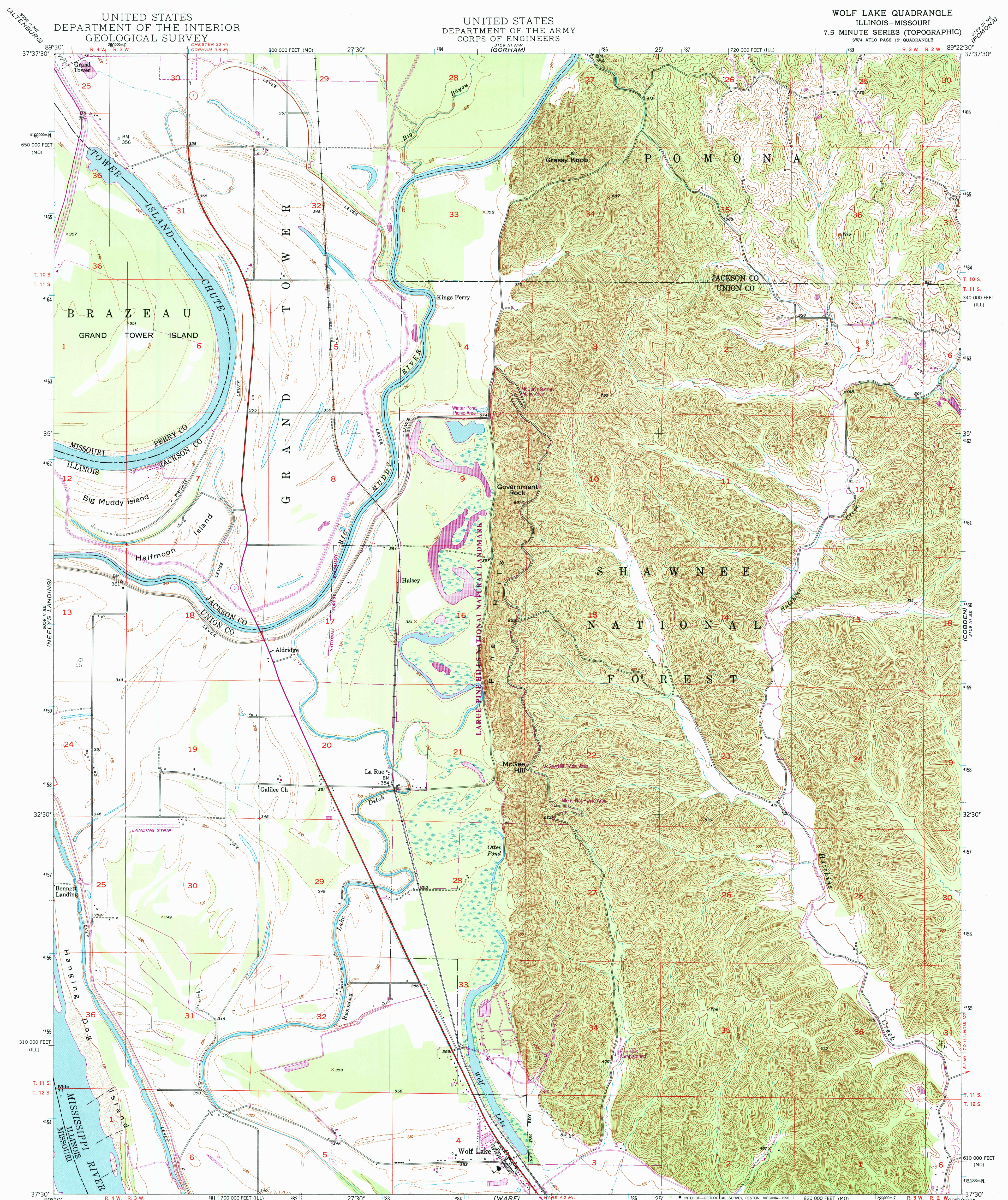
UNITED STATES  
DEPARTMENT OF THE INTERIOR  
GEOLOGICAL SURVEY

UNITED STATES  
DEPARTMENT OF THE ARMY  
CORPS OF ENGINEERS

WOLF LAKE QUADRANGLE  
ILLINOIS-MISSOURI  
7.5 MINUTE SERIES (TOPOGRAPHIC)

SW/4 ATLO PASS 15' QUADRANGLE

3159 III NW  
(GORHAM)



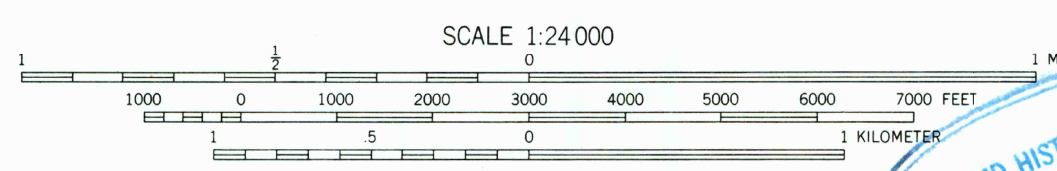
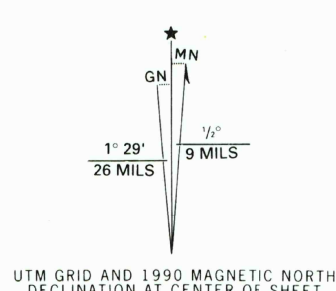
Mapped, edited, and published by the Geological Survey  
Control by USGS, NOS/NOAA, and USCE

Topography from aerial photographs by multiplex methods  
and by plane-table surveys 1947  
Aerial photographs taken 1946

Polycyclic projection, 1927 North American Datum  
10,000 foot grid based on Illinois Coordinate System,  
West Zone, and Missouri Coordinate System, East Zone  
1000-meter Universal Transverse Mercator grid ticks,  
zone 16, shown in blue

To place on the predicted North American Datum 1983,  
move the projection lines 3 meters south and  
7 meters east as shown by dashed corner ticks

There may be private inholdings within the boundaries of  
the National or State reservations shown on this map



CONTOUR INTERVAL 20 FEET  
DASHED LINES REPRESENT HALF-INTERVAL CONTOURS  
NATIONAL GEODETIC VERTICAL DATUM OF 1929

THIS MAP COMPLIES WITH NATIONAL MAP ACCURACY STANDARDS  
FOR SALE BY U.S. GEOLOGICAL SURVEY, DENVER, COLORADO 80225, OR RESTON, VIRGINIA 22092  
ILLINOIS GEOLOGICAL SURVEY, CHAMPAIGN, ILLINOIS 61820  
AND THE DIVISION OF GEOLOGY AND LAND SURVEY  
MISSOURI DEPARTMENT OF NATURAL RESOURCES, ROLLA, MISSOURI 65401  
A FOLDER DESCRIBING TOPOGRAPHIC MAPS AND SYMBOLS IS AVAILABLE ON REQUEST

Revisions shown in purple compiled in cooperation with  
U.S. Forest Service from aerial photographs taken 1988 and other  
sources. Partially field checked by U.S. Forest Service. Map edited 1990

ROAD CLASSIFICATION  
Primary highway, all weather, hard surface  
Secondary highway, all weather, hard surface  
Light-duty road, all weather, improved surface  
Unimproved road, fair or dry weather  
Interstate Route  
U. S. Route  
State Route

WOLF LAKE, ILL.-MO.  
SW/4 ATLO PASS 15' QUADRANGLE  
37089-E4-TF-024

1947  
PHOTOREVISED 1990  
DMA 3159 III SW - SERIES V863