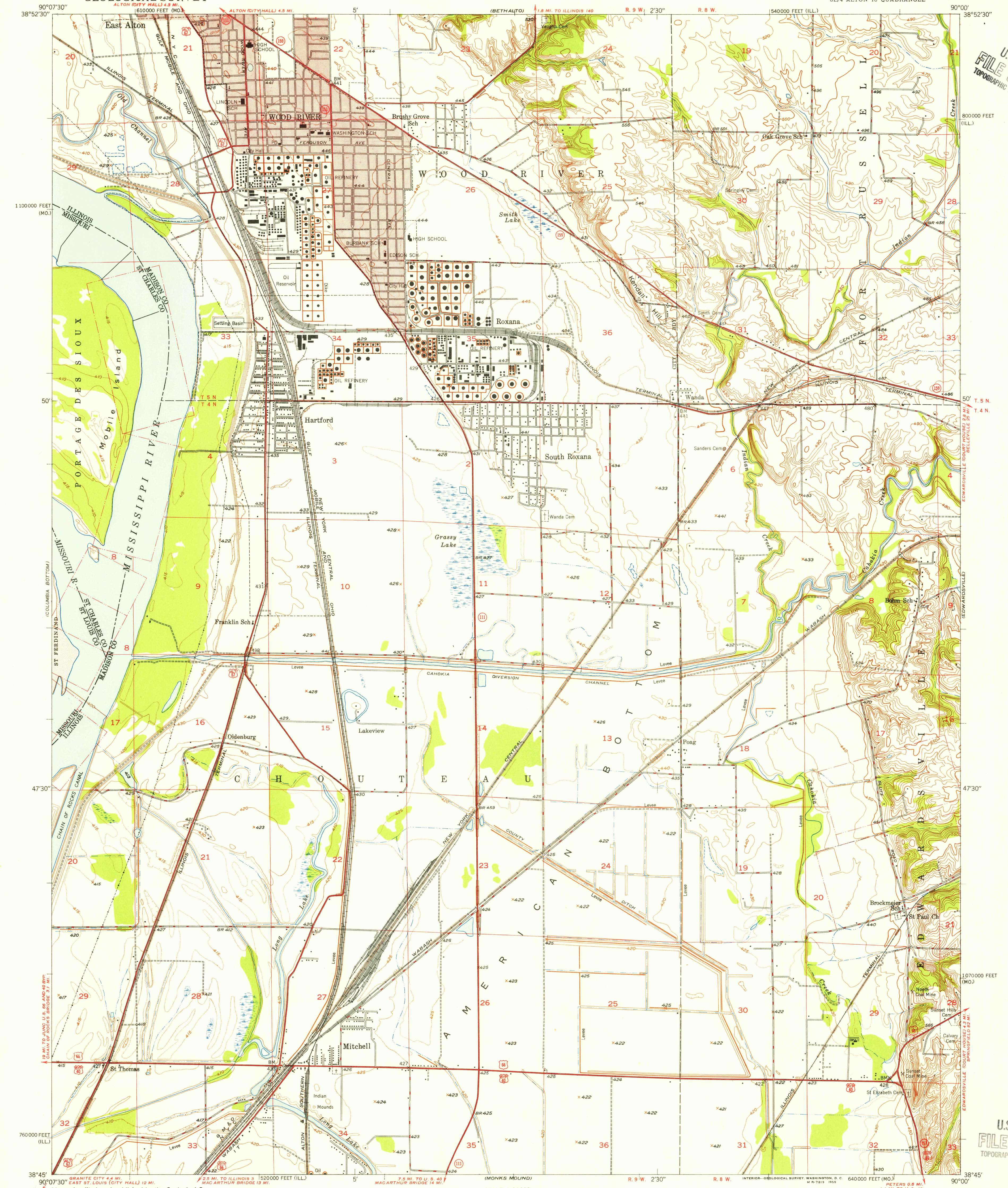


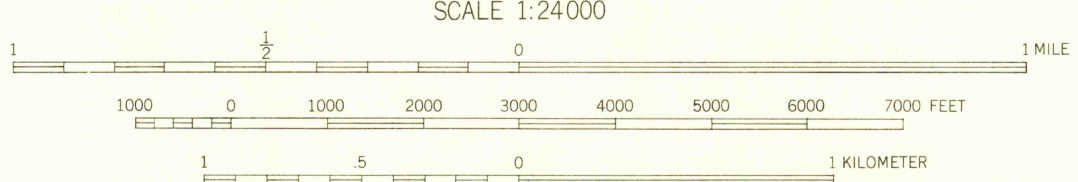
U.S.G.S.
FILE COPY
TOPOGRAPHIC DIVISION



U.S.G.S.
FILE COPY
TOPOGRAPHIC DIVISION

Maped, edited, and published by the Geological Survey
Control by Mississippi River Commission,
USGS and USC&GS
Topography by multiplex methods from aerial photographs
taken 1945, by plane-table surveys 1947-1948 and in part
by Corps of Engineers, U. S. Army. Field check 1947-1948
Polyconic projection. 1927 North American datum
10,000-foot grids based on Illinois coordinate system,
west zone, and Missouri coordinate system, east zone
Red tint indicates area in which only
landmark buildings are shown

TRUE NORTH
MAGNETIC NORTH
APPROXIMATE MEAN
DECLINATION, 1948



CONTOUR INTERVAL 10 FEET
DOTTED LINES REPRESENT HALF INTERVAL CONTOURS
DATUM IS MEAN SEA LEVEL

THIS MAP COMPLIES WITH NATIONAL MAP ACCURACY STANDARDS
FOR SALE BY U. S. GEOLOGICAL SURVEY, FEDERAL CENTER, DENVER, COLORADO OR WASHINGTON 25, D. C.
BY THE STATE GEOLOGICAL SURVEY, URBANA, ILLINOIS,
AND BY THE MISSOURI GEOLOGICAL SURVEY, ROLLA, MISSOURI
A FOLDER DESCRIBING TOPOGRAPHIC MAPS AND SYMBOLS IS AVAILABLE ON REQUEST

USGS
Historical File
Topographic Division

ROAD CLASSIFICATION
HARD-SURFACE ALL WEATHER ROADS
Heavy-duty... 4 LANE 16 LANE
Medium-duty... 4 LANE 16 LANE
Loose-surface, graded, or narrow hard-surface...
U. S. Route
State Route
DRY WEATHER ROADS
Improved dirt...
Unimproved dirt...
WOOD RIVER, ILL.-MO.
SE/4 ALTON 15' QUADRANGLE
N3845-W9000/7.5

1948
MINOR CORRECTIONS MADE 1955