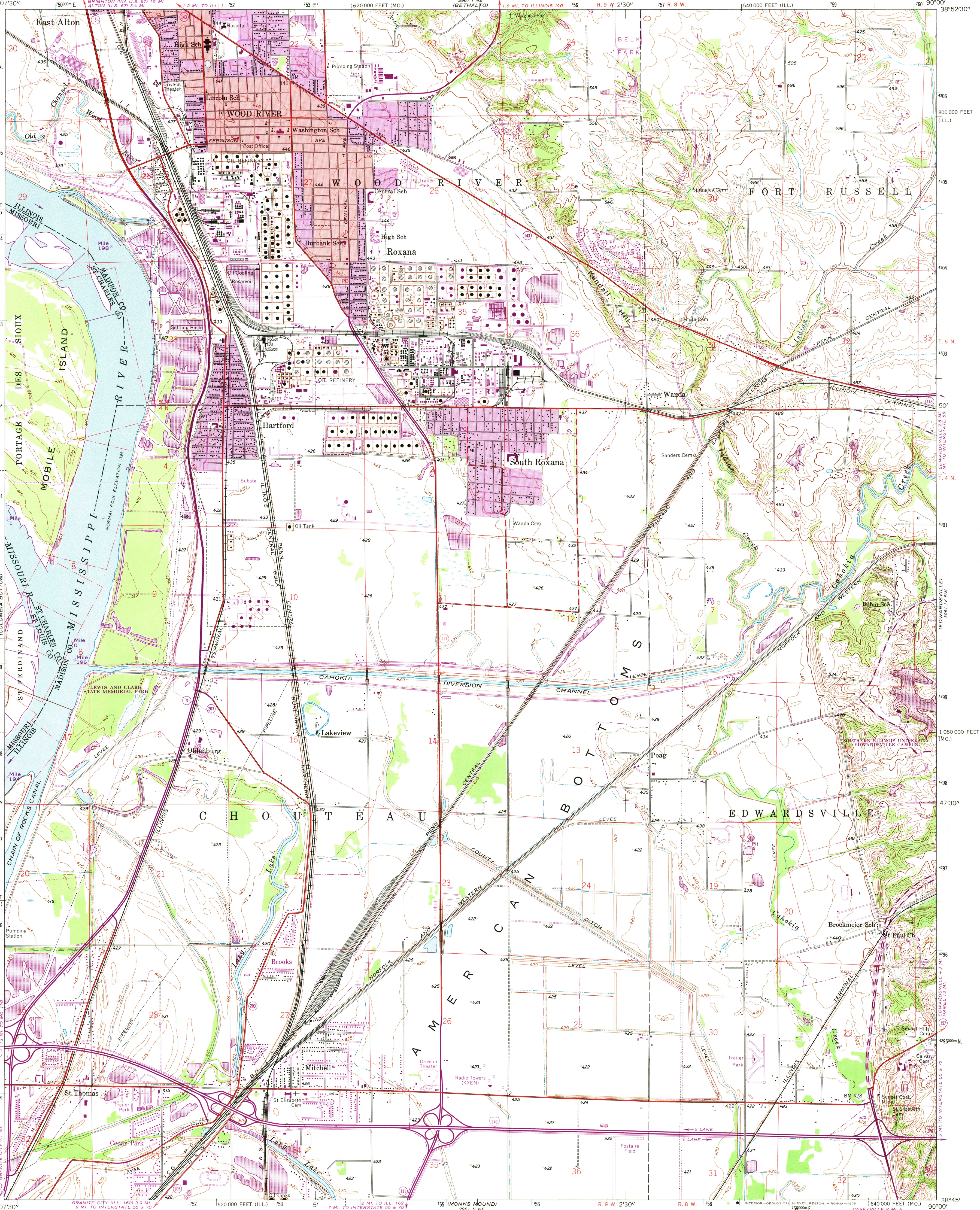


UNITED STATES
DEPARTMENT OF THE INTERIOR
GEOLOGICAL SURVEY

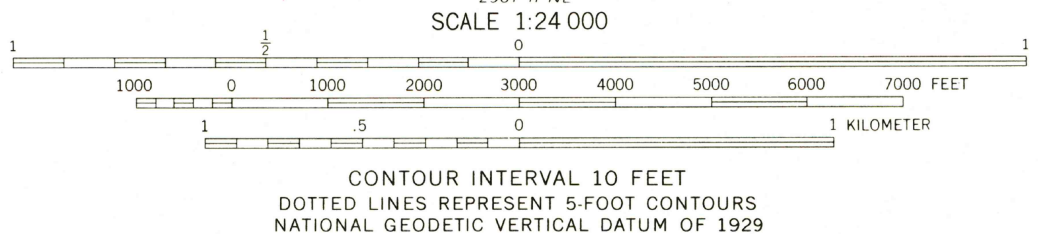
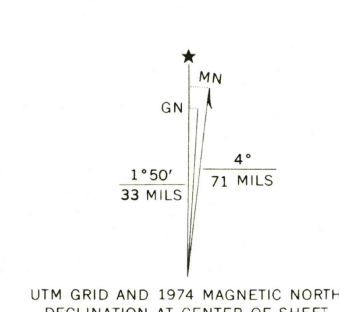
STATE OF MISSOURI
GEOLOGICAL SURVEY AND WATER RESOURCES

STATE OF ILLINOIS
DEPARTMENT OF REGISTRATION AND EDUCATION
GEOLOGICAL SURVEY DIVISION

WOOD RIVER QUADRANGLE
ILLINOIS—MISSOURI
7.5 MINUTE SERIES (TOPOGRAPHIC)
SE 1/4 ALTON 15' QUADRANGLE



Maped by the Geological Survey
Revised by the Army Map Service
Published for civil use by the Geological Survey
Control by USGS, USC&GS, and Mississippi River Commission
Topography from aerial photographs by multiplex methods and
planetable surveys by the Geological Survey 1947-1948 and in
part by Corps of Engineers, U. S. Army. Planimetric detail
revised from aerial photographs taken 1955. Field check 1955
Polyconic projection. 1927 North American datum
10,000-foot grids based on Illinois coordinate system, west zone
and Missouri coordinate system, east zone
1000-meter Universal Transverse Mercator grid ticks, zone 15,
shown in blue
Red tint indicates areas in which only landmark buildings are shown



THIS MAP COMPLIES WITH NATIONAL MAP ACCURACY STANDARDS
FOR SALE BY U. S. GEOLOGICAL SURVEY, DENVER, COLORADO 80225, OR RESTON, VIRGINIA 22092
STATE GEOLOGICAL SURVEY, URBANA, ILLINOIS 61801
AND BY THE DIVISION OF RESEARCH AND TECHNICAL INFORMATION
MISSOURI DEPARTMENT OF NATURAL RESOURCES, ROLLA, MISSOURI 65401
A FOLDER DESCRIBING TOPOGRAPHIC MAPS AND SYMBOLS IS AVAILABLE ON REQUEST



ROAD CLASSIFICATION
Heavy-duty ————— Light-duty —————
Medium-duty ————— Unimproved dirt —————
Interstate Route ————— State Route —————

WOOD RIVER, ILL.—MO.
SE 1/4 ALTON 15' QUADRANGLE
N 3845—W 9000/7.5
1955
PHOTOREVISED 1968 AND 1974
AMS 2961 I SE—SERIES V863

NOV 0 4 1975