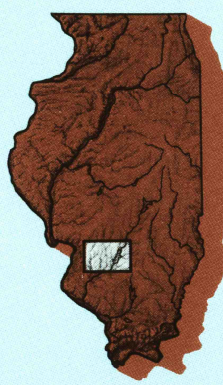


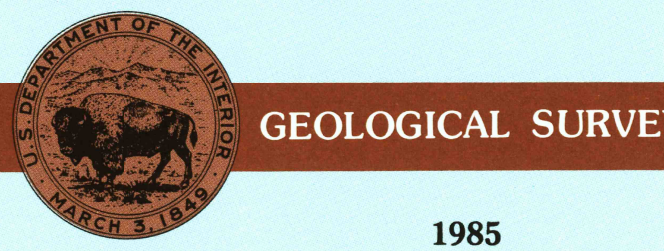
Carlyle Lake ILLINOIS

1:100 000-scale
planimetric map



30 X 60 MINUTE QUADRANGLE
SHOWING

- Elevations in meters
- Highways, roads and other manmade structures
- Water features
- Woodland areas
- Geographic names



Produced by the United States Geological Survey
Compiled from USGS 1:24 000-scale topographic maps dated 1954-1982. Planimetry revised from aerial photographs taken 1981 and other source data. Revised information not field checked. Map dated 1985.
Projection and 10 000-meter grid, zone 16, Universal Transverse Mercator
25 000-foot grid ticks based on Illinois coordinate system, west and east zones
1927 North American Datum
To place on the predicted North American Datum 1983, move the projection lines 2 meters south and 7 meters east
There may be private inholdings within the boundaries of the National or State reservations shown on this map

NATIONAL GEODETIC VERTICAL DATUM OF 1929
ELEVATIONS SHOWN TO THE NEAREST METER

THIS MAP COMPLIES WITH NATIONAL MAP ACCURACY STANDARDS

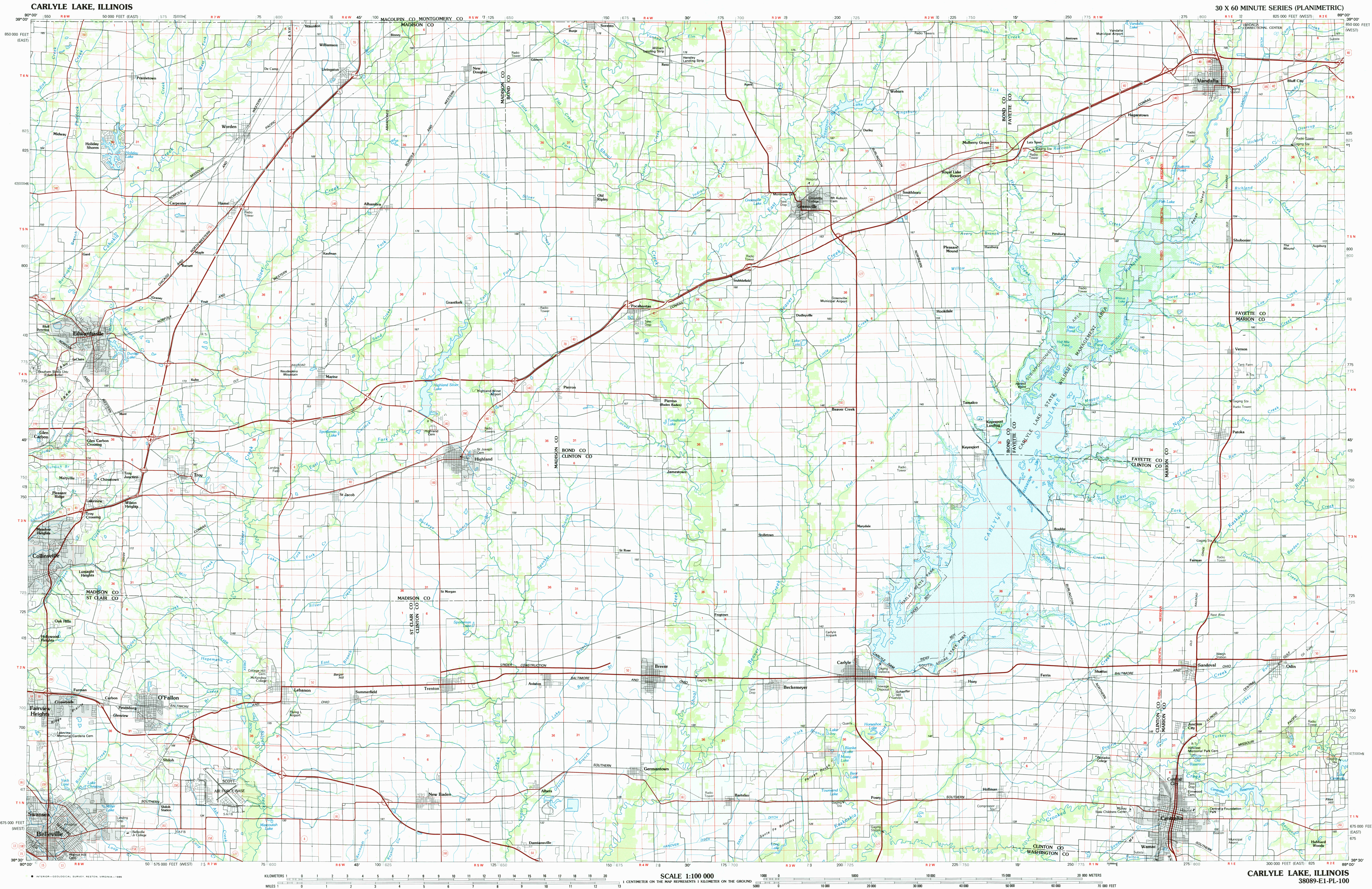
CONVERSION TABLE		DECLINATION DIAGRAM		ADJOINING MAPS			
Meters	Feet	MAGNETIC DECLINATION		1	2	3	
1	3.2808			1	2	3	
2	6.5617			4	5		
3	9.8425			6	7	8	
4	13.1234						
5	16.4042						
6	19.6850						
7	22.9659						
8	26.2467						
9	29.5275						
10	32.8084						
To convert meters to feet multiply by 3.2808		UTM grid convergence (1985 and 1983 magnetic declination (MM) at center of map Diagram is approximate		1 Jerseyville 2 Litchfield 3 Effingham 4 Saint Louis 5 Olney 6 Festus 7 Puckeyville 8 Mount Vernon			
To convert feet to meters multiply by 0.3048							

FOR SALE BY U.S. GEOLOGICAL SURVEY
RESTON, VIRGINIA 22092

Topographic Map Symbols

Primary highway, hard surface.....	
Secondary highway, hard surface.....	
Light duty road, principal street, hard or improved surface.....	
Other road or street; trail.....	
Route marker: interstate; U.S.; State.....	
Railroad: standard gage; narrow gage.....	
Bridge; overpass; underpass.....	
Tunnel: road; railroad.....	
Built up area; locality; elevation.....	
Airport; landing field; landing strip.....	
National boundary.....	
State boundary.....	
County boundary.....	
National or State reservation boundary.....	
Land grant boundary.....	
U.S. public lands survey: range, township, section.....	
Range, township, section line: projected.....	
Power transmission line: pipeline.....	
Quarry; open-pit; rock.....	
Cemetery; building.....	
Windmill; water well; spring.....	
Mine shaft; adit or cave; mine, quarry; gravel pit.....	
Campground; picnic area; U.S. location monument.....	
Ruins; cliff dwelling.....	
Disturbed surface: strip mine, lava, sand.....	
Contours: index; intermediate; supplementary.....	
Bathymetric contours: index; intermediate.....	
Stream, lake; perennial; intermittent.....	
Rapids, large and small; falls, large and small.....	
Area to be submerged; marsh; swamp.....	
Land subject to controlled inundation; woodland.....	
Scrub; mangrove.....	
Orchard; vineyard.....	

A pamphlet describing topographic maps is available on request



CARLYLE LAKE, ILLINOIS
38089-E1-PL-100