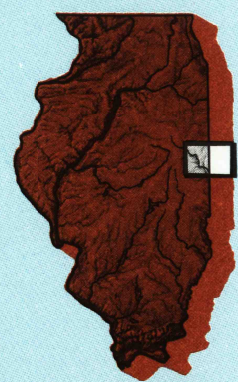


DANVILLE, ILLINOIS-INDIANA

30 X 60 MINUTE SERIES (TOPOGRAPHIC)

Danville  
ILLINOIS-INDIANA

1:100 000-scale metric  
topographic map



30 X 60 MINUTE QUADRANGLE  
SHOWING

- Contours and elevations in meters
- Highways, roads and other manmade structures
- Water features
- Woodland areas
- Geographic names



GEOLOGICAL SURVEY

1984  
PHOTOINSPECTED 1987

Produced by the United States Geological Survey

Compiled from USGS 1:24 000 and 1:62 500-scale topographic maps dated 1958-1983. Planimetry revised from aerial photographs taken 1981-83 and other source data. Revised information not field checked. Map edited 1984 1927 North American Datum (NAD 27). Projection and 10 000-meter grid. Universal Transverse Mercator, zone 16 25 000-foot ticks: Indiana coordinate system, west zone and Illinois coordinate system, east zone

The difference between NAD 27 and North American Datum of 1983 (NAD 83) is too small to show at this scale. The values of the shift between the datums for 7.5-minute intersections are given in USGS Bulletin 1875

There may be private inholdings within the boundaries of the National or State reservations shown on this map  
Map photoinspected using 1987 photographs  
No major culture or drainage changes found

CONTOUR INTERVAL 5 METERS  
NATIONAL GEODETIC VERTICAL DATUM OF 1929  
ELEVATIONS SHOWN TO THE NEAREST METER

THIS MAP COMPLIES WITH NATIONAL MAP ACCURACY STANDARDS

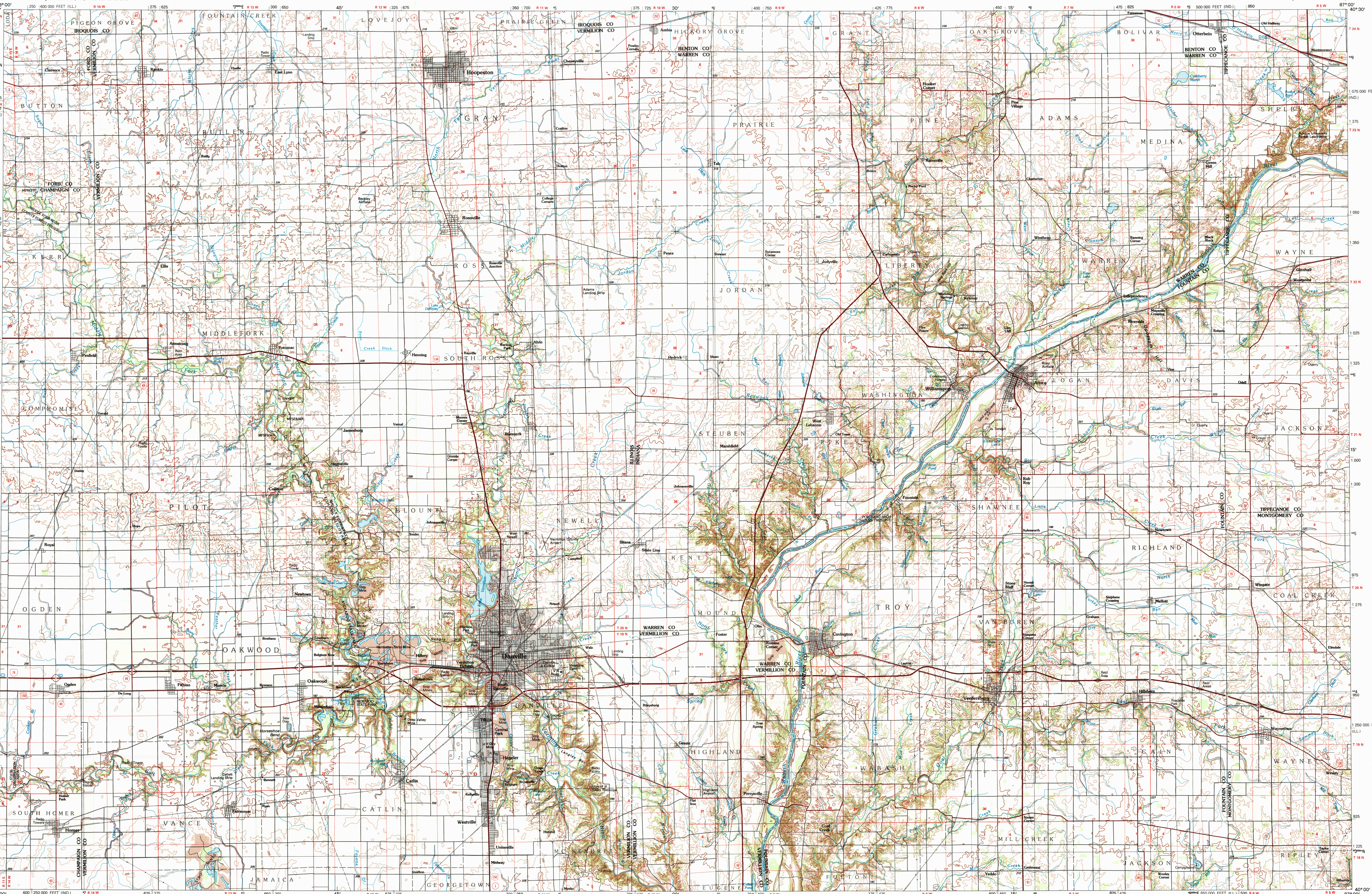
CONVERSION TABLE		DECLINATION DIAGRAM		ADJOINING MAPS		
Meters	Feet	MAGNETIC DECLINATION		1	2	3
1	3.2808			4	5	6
2	6.5616			7	8	
3	9.8424					
4	13.1232					
5	16.4040					
6	19.6848					
7	22.9656					
8	26.2464					
9	29.5272					
10	32.8080					
To convert meters to feet multiply by 3.2808		UTM grid convergence (GM) and 1984 magnetic declination (MD) at center of map. Diagram is approximate.		1	2	3
To convert feet to meters multiply by 0.3048				4	5	6
				7	8	

FOR SALE BY U.S. GEOLOGICAL SURVEY  
DENVER, COLORADO 80225, OR RESTON, VIRGINIA 22092

Topographic Map Symbols

Primary highway, hard surface	
Secondary highway, hard surface	
Light duty road, principal street, hard or improved surface	
Other road or street, road	
Route marker: Interstate, U.S. State	
Railroad: standard gauge; narrow gauge	
Bridge: overpass; underpass	
Tunnel: road; railroad	
Built up area; locality; elevation	
Airport; landing field; landing strip	
National boundary	
County boundary	
National or State reservation boundary	
Land grant boundary	
U.S. public lands survey: range, township; section	
Range, township; section line: projected	
Power transmission line, pipeline	
Dam; dam with lock	
Cemetery; building	
Windmill; water well; spring	
Mine shaft; adit or cave; mine, quarry; gravel pit	
Campground; picnic area; U.S. location monument	
Ruins; cliff dwelling	
Distorted surface: strip mine, lava; sand	
Land grant boundary	
Contours: index, intermediate, supplementary	
Bathymetric contours: index, intermediate	
Stream, lake: perennial; intermittent	
Rapids, large and small; falls, large and small	
Areas to be submerged; marsh, swamp	
Land subject to controlled inundation; woodland	
Scrub; meadow	
Drake; wetland	

A pamphlet describing topographic maps is available on request



SCALE 1:100 000  
1 CENTIMETER ON THE MAP REPRESENTS 1 KILOMETER ON THE GROUND  
CONTOUR INTERVAL 5 METERS

DANVILLE, ILLINOIS-INDIANA  
40087-A1-TM-100

1984

PHOTOINSPECTED 1987