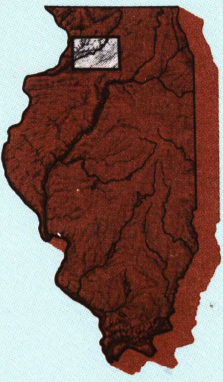


DIXON, ILLINOIS

30 X 60 MINUTE SERIES (PLANIMETRIC)

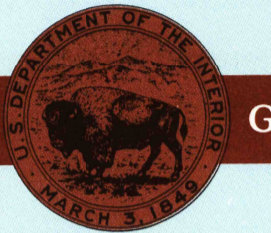
Dixon
ILLINOIS

1:100 000-scale
planimetric map



30 X 60 MINUTE QUADRANGLE
SHOWING

- Elevations in meters
- Highways, roads and other manmade structures
- Water features
- Woodland areas
- Geographic names



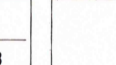
GEOLOGICAL SURVEY

1985

Produced by the United States Geological Survey
Compiled from USGS 1:24 000 and 1:62 500-scale topographic maps dated 1983-84 and other source data. Revised information not field checked. Map edited 1985
Projection and 10 000-meter grid, zone 16,
Universal Transverse Mercator
25 000-foot grid ticks based on Illinois coordinate system, west and east zones
1927 North American Datum
To place on the predicted North American Datum 1983, move the projection lines 2 meters north and 8 meters east
There may be private inholdings within the boundaries of the National or State reservations shown on this map

NATIONAL GEODETIC VERTICAL DATUM OF 1929
ELEVATIONS SHOWN TO THE NEAREST METER

THIS MAP COMPLIES WITH NATIONAL MAP ACCURACY STANDARDS

CONVERSION TABLE		DECLINATION DIAGRAM	ADJOINING MAPS				
Meters	Feet		1	2	3	4	5
1	3.2808		1	2	3	4	5
2	6.5617		6	7	8		
3	9.8425						
4	13.1234						
5	16.4042						
6	19.6850						
7	22.9658						
8	26.2467						
9	29.5275						
10	32.8084						
To convert meters to feet multiply by 3.2808		UTM grid convergence (GM) and 1983 magnetic declination (MD) at center of map. Diagram is approximate	1	2	3	4	5
To convert feet to meters multiply by 0.3048			6	7	8		
			1 Dubuque South				
			2 Rockford				
			3 Elgin				
			4 Davenport				
			5 Aurora				
			6 Albia				
			7 Keosauwe				
			8 Ottawa				

FOR SALE BY U.S. GEOLOGICAL SURVEY
USGS NMD HISTORICAL MAP RESTON, VIRGINIA 22092

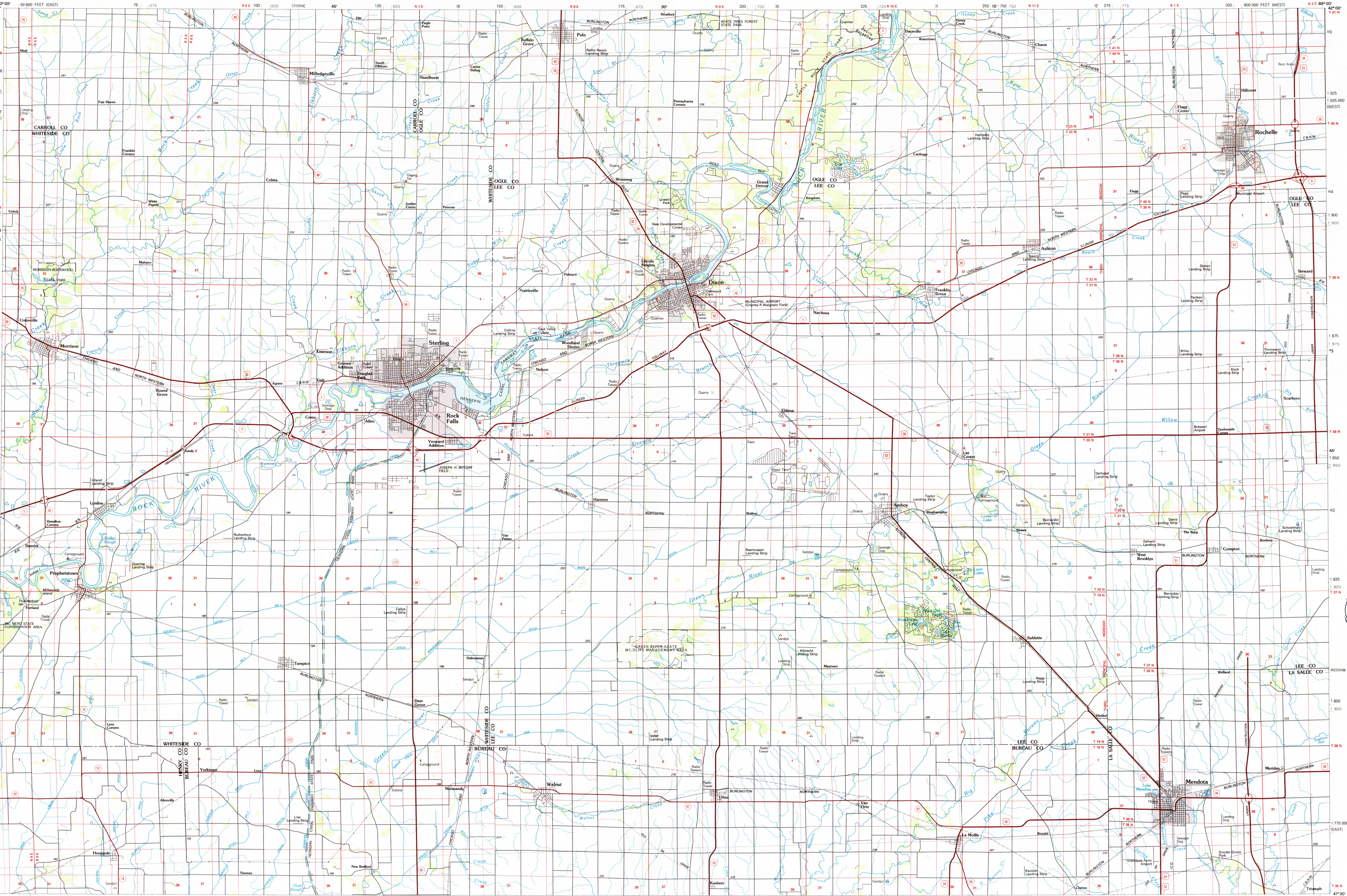
JAN 27 1986

REC'D FILE COPY

Topographic Map Symbols

Primary highway, hard surface	
Secondary highway, hard surface	
Light duty road, gravel street, hard or improved surface	
Other road or street, trail	
Route marker: interstate, U.S.; State	
Railroad: standard gauge; narrow gauge	
Bridge: overpass; underpass	
Tunnel: road; railroad	
Built up area: locality, elevation	
Airport: landing field; landing strip	
National boundary	
State boundary	
County boundary	
National or State reservation boundary	
Land grant boundary	
U.S. public lands survey: range, township; section	
Range, township; section line: protracted	
Power transmission line: pipeline	
Dam; dam with lock	
Cemetery: building	
Windmill; water well; spring	
Mine shaft; adit or cave; mine, quarry; gravel pit	
Campground; picnic area; U.S. location monument	
Ruin; cliff dwelling	
Disturbed surface: strip mine, lava, sand	
Contours: index; intermediate; supplementary	
Bathymetric contours: index; intermediate	
Stream, lake: perennial; intermittent	
Rapids, large and small; falls, large and small	
Area to be submerged; marsh, swamp	
Land subject to controlled inundation; woodland	
Scrub; mangrove	
Orchard; vineyard	

A pamphlet describing topographic maps is available on request



INTERIOR-GEOLOGICAL SURVEY RESTON, VIRGINIA-1985

DIXON, ILLINOIS
41089-E1-PL-100

1985