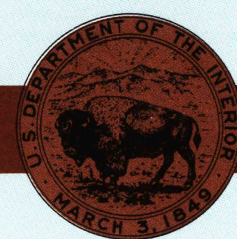


0 X 60 MINUTE QUADRANGLE SHOWING

- Elevations in meters
- Highways, roads and other manmade structures
- Water features
- Woodland areas
- Geographic names




1986

Projection and 10 000-meter grid, zone 16,
Universal Transverse Mercator
25 000-foot grid ticks based on Illinois coordinate
system, east zone
1927 North American Datum
To place on the predicted North American Datum 1983, move
the projection lines 1 meter south and 5 meters east

There may be private inholdings within the boundaries of
the National or State reservations shown on this map

NATIONAL GEODETIC VERTICAL DATUM OF 1929
ELEVATIONS SHOWN TO THE NEAREST METER

THIS MAP COMPLIES WITH NATIONAL MAP ACCURACY STANDARDS

CONVERSION TABLE		DECLINATION DIAGRAM		ADJOINING MAPS		
Meters	Feet			1	2	3
1	3.2808					
2	6.5617					
3	9.8425					
4	13.1234					
5	16.4042					
6	19.6850					
7	22.9659					
8	26.2467					
9	29.5276					
10	32.8084					
To convert meters to feet multiply by 3.2808		UTM grid convergence (GN) and 1986 magnetic declination (MN) at center of map		1 Springfield		
To convert feet to meters multiply by 0.3048		Diagram is approximate		2 Decatur		
				3 Paris		
				4 Lynchfield		
				5 Terre Haute		
				6 Cayle Lake		
				7 Olney		
				8 Vincennes		

FOR SALE BY U. S. GEOLOGICAL SURVEY
RESTON, VIRGINIA 22092

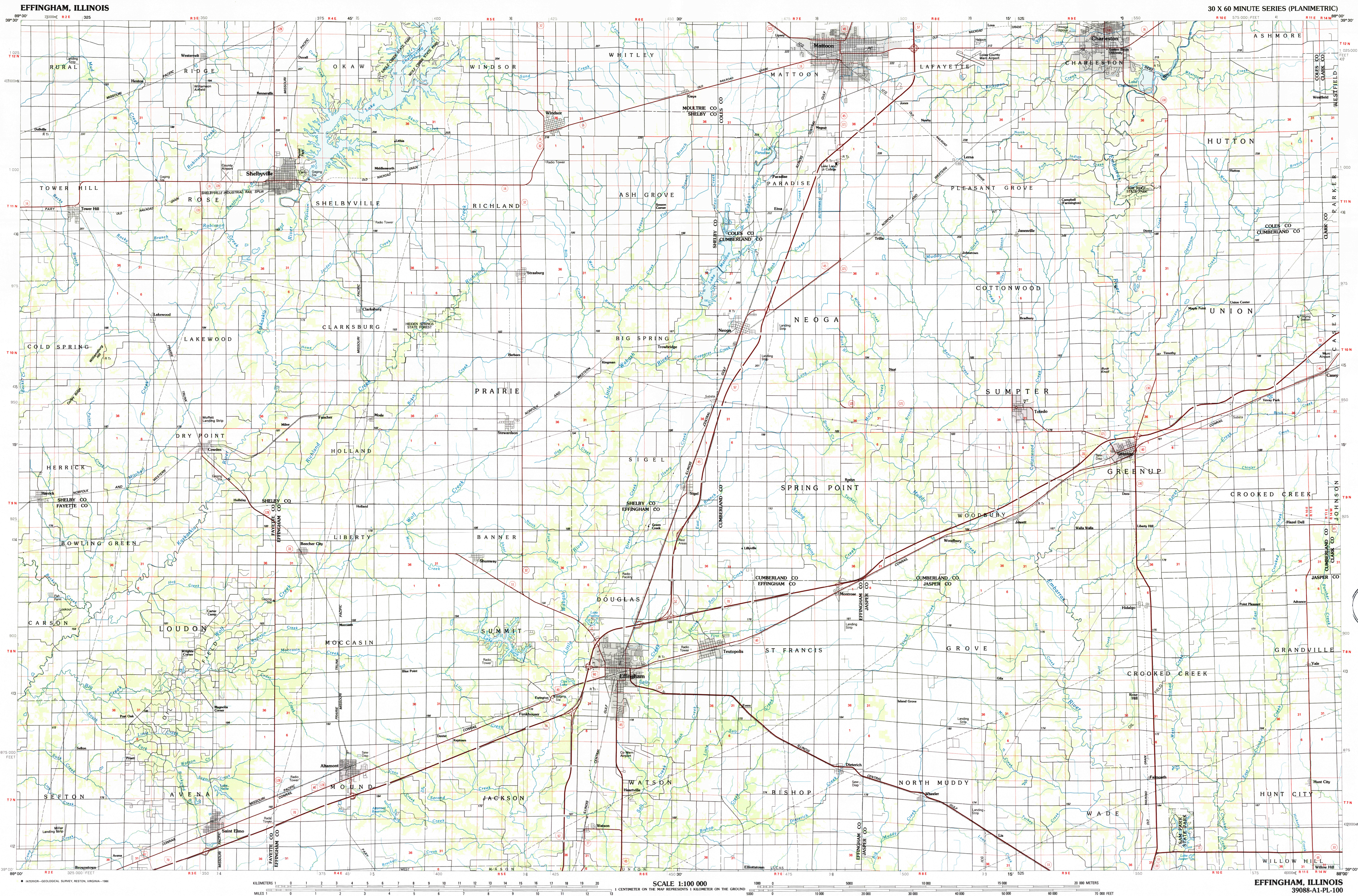
USGS NMD HISTORICAL MAP

SEP 22 1986

REC'D FILE COPY

Primary highway, hard surface
Secondary highway, hard surface
Light duty road, principal arterial, hard or improved surface
Minor road or street, paved
Rural road marker: Interstate: U.S. State
Railroad: standard gauge, narrow gauge
Bridge: overpass; underpass
Tunnel: road; railroad
Built up area, locally elevated
Airport: landing field; landing strip
National boundary
State boundary
County boundary
National or State reservation boundary
Land grant boundary
U.S. public lands survey: range, township; section
Range, township; section line; protected
Power transmission line, pipeline
Fence: steel with lock
Cemetery; building
Windsail; water of, spring
Mine shaft; adit or cave, mine, quarry; gravel pit
Geographic point area; U.S. location monument
Rune; cliff dwelling
Disturbed surface: strip mine, lake, sand
Contours: index; intermediate; supplementary
Bathymetric contours: index; intermediate
Open lake; perennial; intermittent
Rapids, large; small; falls, large and small
Area to be submerged; marsh, swamp
Land subject to controlled inundation; woodland
Scrub; mangrove

A pamphlet describing topographic maps is available on request



EFFINGHAM, ILLINOIS
39088-A1-PL-100

1986