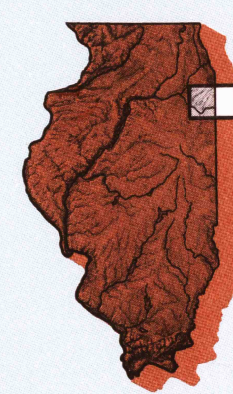


Kankakee

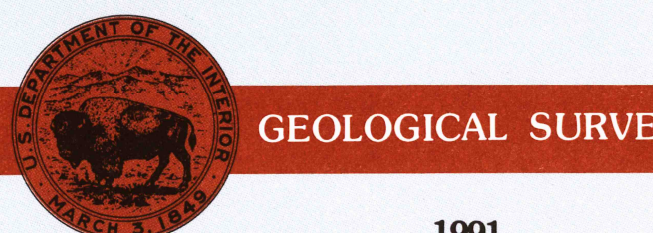
ILLINOIS-INDIANA

1:100 000-scale metric
topographic map



30 X 60 MINUTE QUADRANGLE
SHOWING

- Contours and elevations in meters
- Highways, roads and other manmade structures
- Water features
- Woodland areas
- Geographic names



1991

Produced by the United States Geological Survey
Compiled from USGS 1:24 000 and 1:62 500-scale topographic maps dated 1953-1980. Planimetry revised from aerial photographs taken 1967-88 and other source data. Revised information not field checked. Map edited 1991.
Projection and 10 000-meter grid, zone 16, Universal Transverse Mercator
25 000-foot grid ticks based on Indiana coordinate system, west zone and Illinois coordinate system, east zone
1927 North American Datum
To place on the predicted North American Datum 1983, move the projection lines 1 meter north and 4 meters east
There may be private landholdings within the boundaries of the National or State reservations shown on this map

CONTOUR INTERVAL 5 METERS
NATIONAL GEODETIC VERTICAL DATUM OF 1929
ELEVATIONS SHOWN TO THE NEAREST METER

THIS MAP COMPLIES WITH NATIONAL MAP ACCURACY STANDARDS

CONVERSION TABLE		DECLINATION DIAGRAM		ADJOINING MAPS				
Meters	Feet	MAGNETIC DECLINATION		1	2	3	4	5
1	3.281			1	2	3	4	5
2	6.562			6	7	8		
3	9.843							
4	13.124							
5	16.405							
6	19.686							
7	22.967							
8	26.248							
9	29.529							
10	32.810							
To convert meters to feet multiply by 3.2808		UTM grid convergence (1983 and 1981 magnetic declination (1983) at center of map Diagram is approximate						
To convert feet to meters multiply by 0.3048								

FOR SALE BY U.S. GEOLOGICAL SURVEY
DENVER, COLORADO 80225, OR RESTON, VIRGINIA 22092

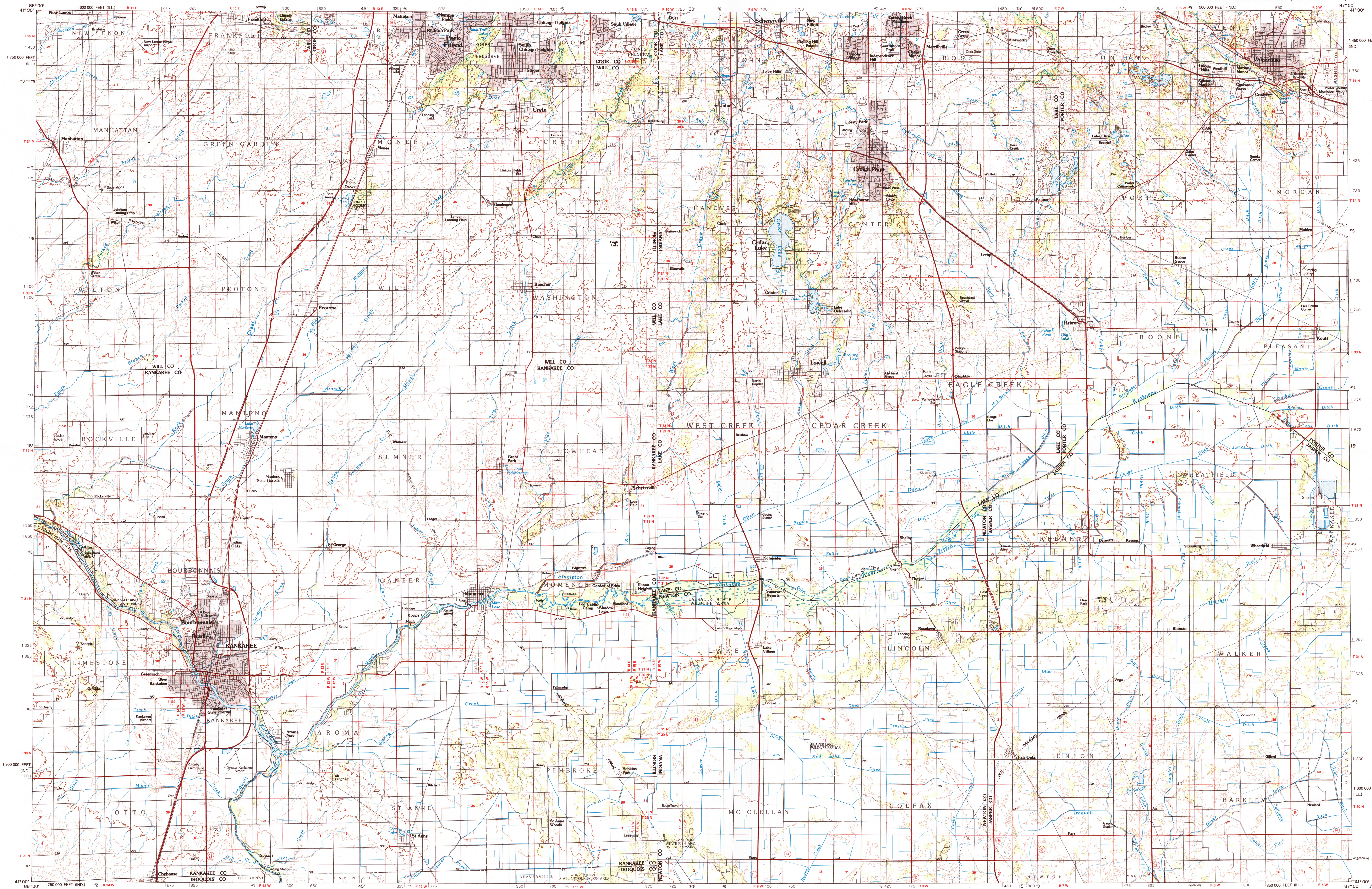
Topographic Map Symbols

- Primary highway, hard surface
- Secondary highway, hard surface
- Light duty road, principal street, hard or improved surface
- Other road or street, trail
- Route marker: Interstate, U.S.; State
- Railroad: standard gauge; narrow gauge
- Bridge, overpass, underpass
- Tunnel: road; railroad
- Built up area, locality, elevation
- Airport; landing field; landing strip
- National boundary
- State boundary
- County boundary
- National or State reservation boundary
- Land grant boundary
- U.S. public lands survey: range, township, section
- Range, township, section line: protracted
- Power transmission line; pipeline
- Dam: dam with lock
- Cemetery, building
- Windmill; water well; spring
- Mine shaft; adit or cave; mine, quarry; gravel pit
- Campground; picnic area; U.S. location monument
- Rune; cliff dwelling
- Disrupted surface: strip mine, lava; sand
- Contours: index; intermediate; supplementary
- Bathymetric contours: index; intermediate
- Stream, lake: perennial; intermittent
- Rapids, large and small; falls, large and small
- Area to be submerged; marsh, swam
- Land subject to controlled inundation; woodland
- Scrub; mangrove
- Orchard; vineyard

USGS TOP MAPS A permit describing topographic maps is available on request
JUL 24 1991
REC'D FILE COPY

KANKAKEE, ILLINOIS-INDIANA

30 X 60 MINUTE SERIES (TOPOGRAPHIC)



SCALE 1:100 000
CONTOUR INTERVAL 5 METERS

1 KILOMETER
1 CENTIMETER ON THE MAP REPRESENTS 1 KILOMETER ON THE GROUND

5000 10000 15000 20000 25000 30000 35000 40000 45000 50000 55000 60000 65000 70000 METERS

1 2 3 4 5 6 7 8 9 10 11 12 13 14 15 16 17 18 19 20

1 2 3 4 5 6 7 8 9 10 11 12 13 14 15 16 17 18 19 20

KANKAKEE, ILLINOIS-INDIANA
41087-A1-TM-100
1991