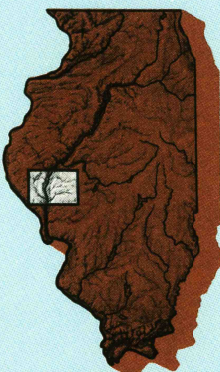


MEREDOSIA, ILLINOIS

30 X 60 MINUTE SERIES (PLANIMETRIC)

Meredosia
ILLINOIS

1:100 000-scale
planimetric map



30 X 60 MINUTE QUADRANGLE
SHOWING

- Elevations in meters
- Highways, roads and other manmade structures
- Water features
- Woodland areas
- Geographic names



GEOLOGICAL SURVEY

1985

Produced by the United States Geological Survey
Compiled from USGS 1:24 000-scale topographic maps dated 1980-1983. Planimetry revised from aerial photographs taken 1980-1982 and other source data. Revised information not field checked. Map edited 1985
Projection and 10 000-meter grid, zone 15, Universal Transverse Mercator
25 000-foot grid ticks based on Illinois coordinate system, west zone
1927 North American Datum
To place on the predicted North American Datum 1983, move the projection lines 1 meter south and 9 meters east
There may be private inholdings within the boundaries of the National or State reservations shown on this map.

NATIONAL GEODETIC VERTICAL DATUM OF 1929
ELEVATIONS SHOWN TO THE NEAREST METER

THIS MAP COMPLIES WITH NATIONAL MAP ACCURACY STANDARDS

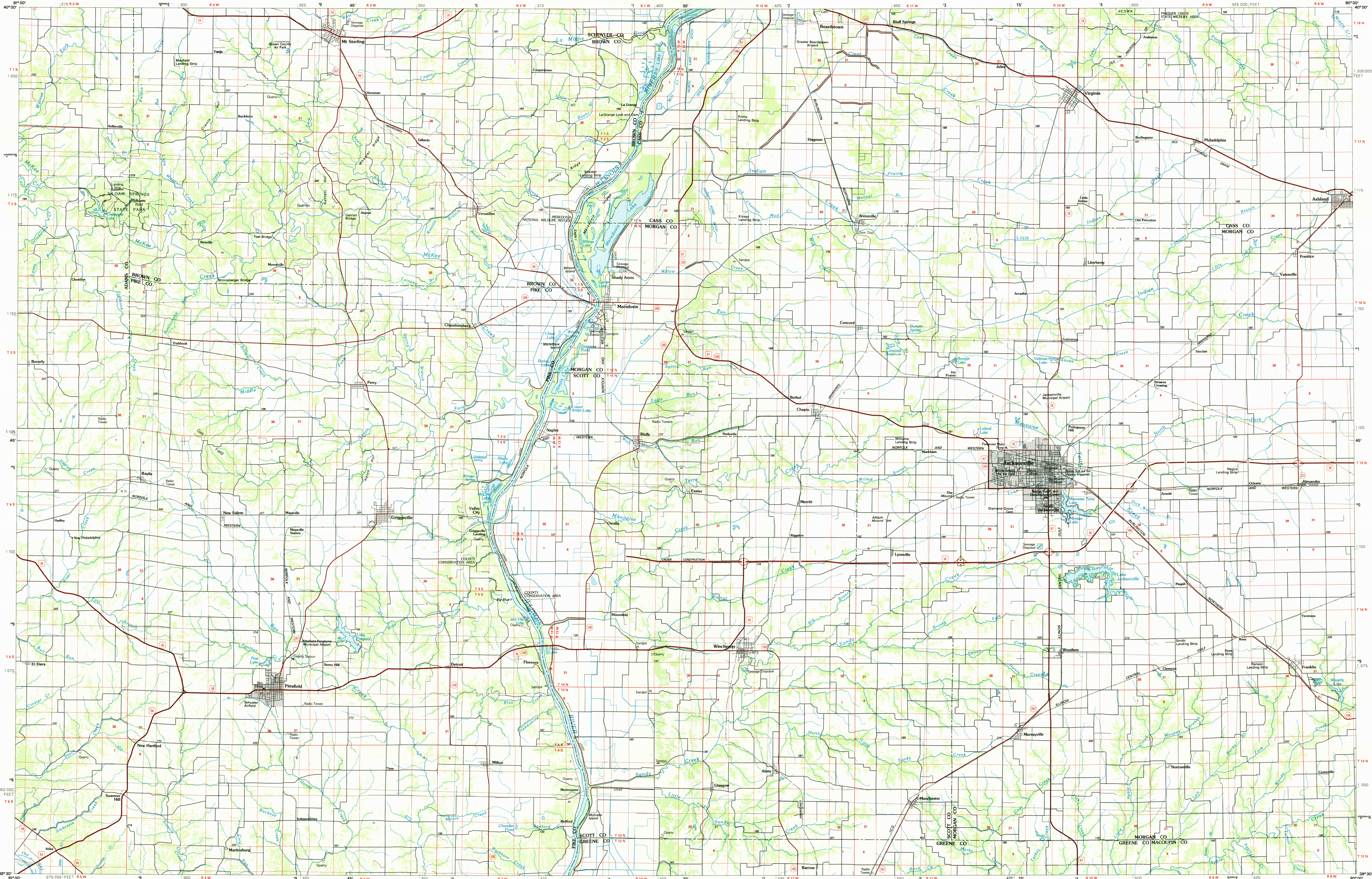
CONVERSION TABLE		DECLINATION DIAGRAM		ADJOINING MAPS			
Meters	Feet	Diagram		1	2	3	
1	3.2808			4	5	6	
2	6.5617			7	8		
3	9.8425						
4	13.1234						
5	16.4042						
6	19.6850						
7	22.9659						
8	26.2467						
9	29.5275						
10	32.8084						
To convert meters to feet multiply by 3.2808		UTM grid convergency (G) and 1983 magnetic declination (M) are shown on map. Diagram is approximate.		1	2	3	
To convert feet to meters multiply by 0.3048				4	5	6	
				7	8		

FOR SALE BY U.S. GEOLOGICAL SURVEY
DENVER, COLORADO 80225 OR RESTON, VIRGINIA 22092
OCT 24 1988
REC'D FILE COPY

Topographic Map Symbols

Primary highway, hard surface.....	
Secondary highway, hard surface.....	
Light duty road, principal street, hard or improved surface.....	
Other road or street, trail.....	
Route marker: Interstate, U.S., State.....	
Railroad: standard gauge; narrow gauge.....	
Bridge: overpass; underpass.....	
Tunnel: road; railroad.....	
Built-up area; locality; elevation.....	
Airport; landing field; landing strip.....	
National boundary.....	
State boundary.....	
County boundary.....	
National or State reservation boundary.....	
Land grant boundary.....	
U.S. public lands survey; range, township, section.....	
Range, township, section line: protracted.....	
Power transmission line: pipeline.....	
Dam; dam with lock.....	
Cemetery; building.....	
Wooded; water well; spring.....	
Mine shaft; adit or cave; mine, quarry; gravel pit.....	
Campground; picnic area; U.S. location monument.....	
Ruins; cliff dwelling.....	
Distorted surface: strip mine, lava, sand.....	
Contour: index; intermediate; supplementary.....	
Bathymetric contour: index; intermediate.....	
Stream, lake: perennial; intermittent.....	
Rapids, large and small; falls; large and small.....	
Area to be submerged; marsh, swamp.....	
Land subject to controlled inundation; woodland.....	
Marsh; mangrove.....	
Orchard; vineyard.....	

A pamphlet describing topographic maps is available on request



SCALE 1:100 000

MEREDOSIA, ILLINOIS
39090-E1-PL-100

1985