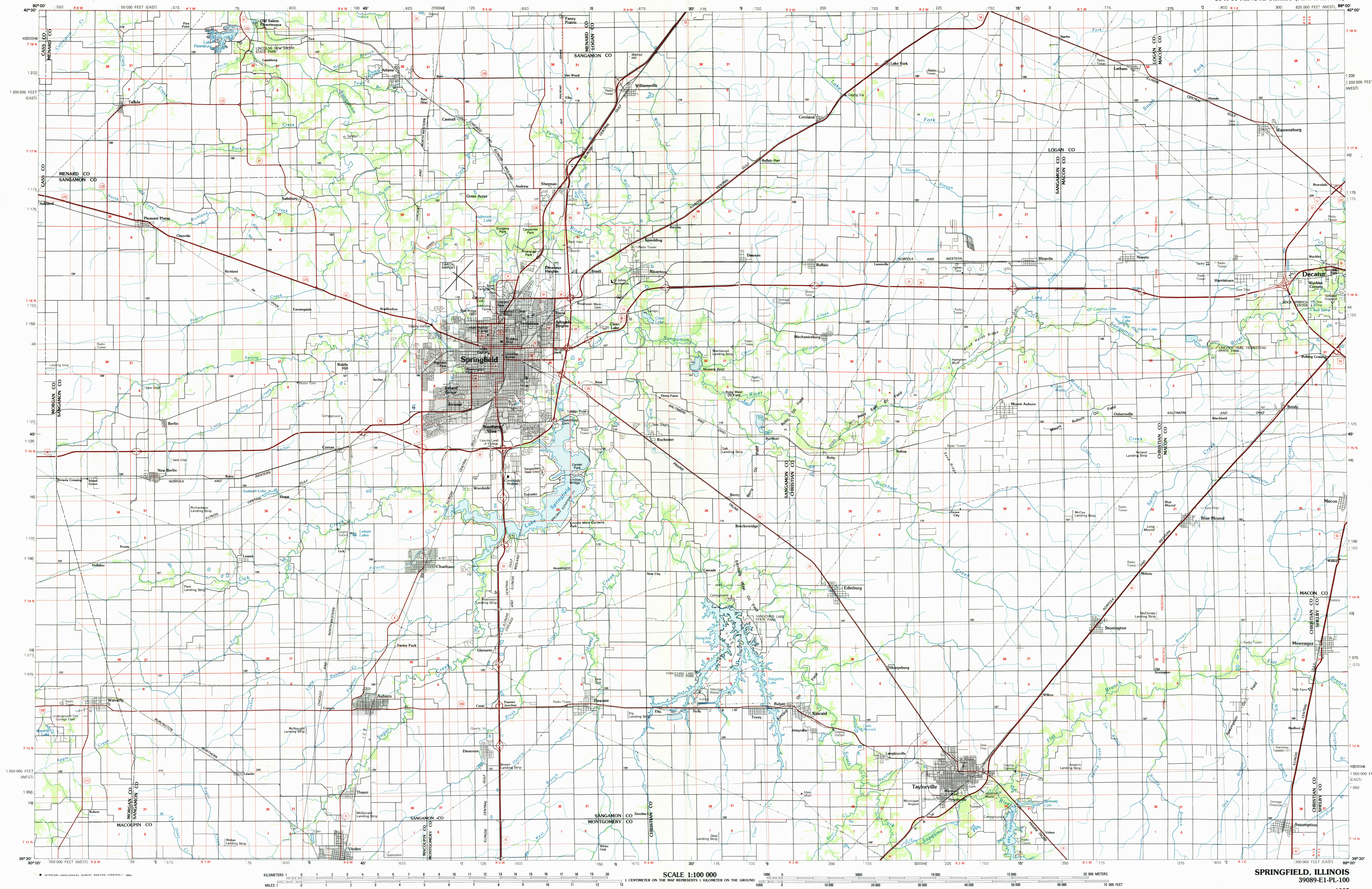
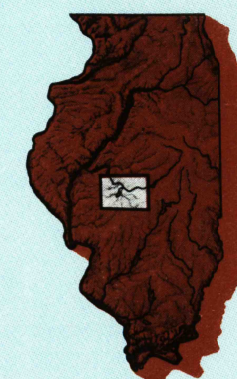
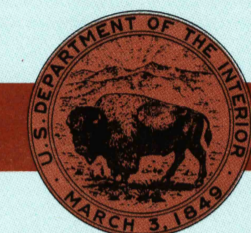


SPRINGFIELD, ILLINOIS

30 X 60 MINUTE SERIES (PLANIMETRIC)

Springfield
ILLINOIS1:100 000-scale
planimetric map30 X 60 MINUTE QUADRANGLE
SHOWING

- Elevations in meters
- Highways, roads and other manmade structures
- Water features
- Woodland areas
- Geographic names



GEOLOGICAL SURVEY

1985

Produced by the United States Geological Survey

Compiled from USGS 1:24 000-scale topographic maps dated 1961-1983. Planimetry revised from aerial photographs taken 1980 and other source data. Revised information not field checked. Map edited 1985.

Projection and 10 000-meter grid, zone 16.

Universal Transverse Mercator

25 000-foot grid ticks based on Illinois coordinate system, west and east zones

1927 North American Datum

To place on the predicted North American Datum 1983, move the projection lines 1 meter south and 7 meters east.

There may be private inholdings within the boundaries of the National or State reservations shown on this map.

NATIONAL GEODETIC VERTICAL DATUM OF 1929

ELEVATIONS SHOWN TO THE NEAREST METER

THIS MAP COMPLIES WITH NATIONAL MAP ACCURACY STANDARDS

CONVERSION TABLE		DECLINATION DIAGRAM		ADJOINING MAPS	
Meters	Feet			1	2
1	3.2808			3	5
2	6.5617			4	6
3	9.8425			7	8
4	13.1234				
5	16.4042				
6	19.6850				
7	22.9658				
8	26.2467				
9	29.5275				
10	32.8084				
To convert meters to feet multiply by 3.2808		UTM grid convergence (IGN and 1983 magnetic declination (MN) at center of map multiply by 0.3048		1 Macomb 2 Lincoln 3 Champaign 4 Meredosia 5 Decatur 6 Jerseyville 7 Litchfield 8 Ellington	

FOR SALE BY U. S. GEOLOGICAL SURVEY
RESTON, VIRGINIA 22092

Topographic Map Symbols

Primary highway, hard surface.....	
Secondary highway, hard surface.....	
Light duty road, principal street, hard or improved surface.....	
Other road or street; trail.....	
Route marker: Interstate, U.S., State.....	
Railroad: standard gage; narrow gage.....	
Bridge: overpass; underpass.....	
Tunnel: road; railroad.....	
Built up area; locality; elevation.....	
Airport: landing field; landing strip.....	
National boundary.....	
State boundary.....	
County boundary.....	
National or State reservation boundary.....	
Land grant boundary.....	
U.S. public lands survey: range, township, section.....	
Range, township; section line: protracted.....	
Power transmission line: pipeline.....	
Dike, dam with lock.....	
Cemetery: building.....	
Windmill; water well; spring.....	
Mine shaft; adit or cave; mine, quarry; gravel pit.....	
Campground; picnic area; U.S. location monument.....	
Ruin; cliff dwelling.....	
Disturbed surface: strip mine, lava, sand.....	
Contours: index; intermediate; supplementary.....	
Bathymetric contours: index; intermediate.....	
Stream, lake: perennial; intermittent.....	
Rapids, large and small; falls, large and small.....	
Area to be submerged; marsh, swamp.....	
Land subject to controlled inundation; woodland.....	
Scrub; mangrove.....	
Orchard; vineyard.....	

A pamphlet describing topographic maps is available on request

SPRINGFIELD, ILLINOIS
39089-E1-PL-100

1985