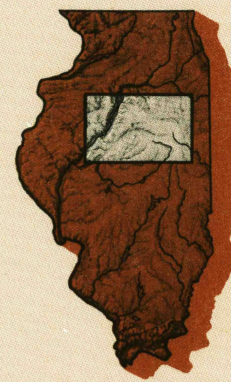


Peoria ILLINOIS

1:250 000-scale metric
topographic map



1 X 2 DEGREE QUADRANGLE
SHOWING

- Contours and elevations in meters
- Highways, roads and other manmade structures
- Water features
- Woodland areas
- Geographic names



GEOLOGICAL SURVEY

1990

Produced by the United States Geological Survey
Compiled from USGS 1:100 000-scale maps dated 1985-1989
Supersedes map dated 1958. Map edited 1990
North American Datum of 1983 (NAD 83). Projection and
10 000-meter grid: Universal Transverse Mercator, zone 16
25 000-meter grid ticks: Illinois Coordinate System of 1983
(east and west zones).

The difference between NAD 83 and North American Datum of
1927 (NAD 27) for 7.5 minute intersections is given in USGS
Bulletin 1875

There may be private inholdings within the boundaries of the
National or State reservations shown on this map
Areas covered by dashed light-blue pattern
are subject to controlled inundation

1990 MAGNETIC DECLINATION FROM TRUE NORTH VARIES
FROM 1/2° (9 MILS) WESTERLY FOR THE CENTER OF THE
WEST EDGE TO 1° (18 MILS) WESTERLY FOR THE CENTER
OF THE EAST EDGE. MEAN ANNUAL CHANGE IS 8.9° WESTERLY

CONTOUR INTERVAL 20 METERS
SUPPLEMENTAL CONTOUR INTERVAL 10 METERS
NATIONAL GEODETIC VERTICAL DATUM OF 1929
ELEVATIONS SHOWN TO THE NEAREST METER

THIS MAP COMPLIES WITH NATIONAL MAP ACCURACY STANDARDS
USGS NMD HISTORICAL MAP

AUG 27 1990

REC'D FILE COPY

CONVERSION TABLE			
Meters	Feet	Meters	Feet
1	3.2808	100	3280.84
2	6.5617	200	6561.68
3	9.8425	300	9842.52
4	13.1234	400	13123.36
5	16.4042	500	16404.20
6	19.6850	600	19685.04
7	22.9659	700	22965.88
8	26.2467	800	26246.72
9	29.5276	900	29527.56
10	32.8084	1000	32808.40

To convert meters to feet
multiply by 3.2808
To convert feet to meters
multiply by 0.3048

ADJOINING MAPS		
1	2	3
4		5
6	7	8

- 1 Davenport
- 2 Aurora
- 3 Chicago
- 4 Burlington
- 5 Danville
- 6 Quincy
- 7 Decatur
- 8 Indianapolis

FOR SALE BY U.S. GEOLOGICAL SURVEY
DENVER, COLORADO 80225, OR RESTON, VIRGINIA 22092

Topographic Map Symbols

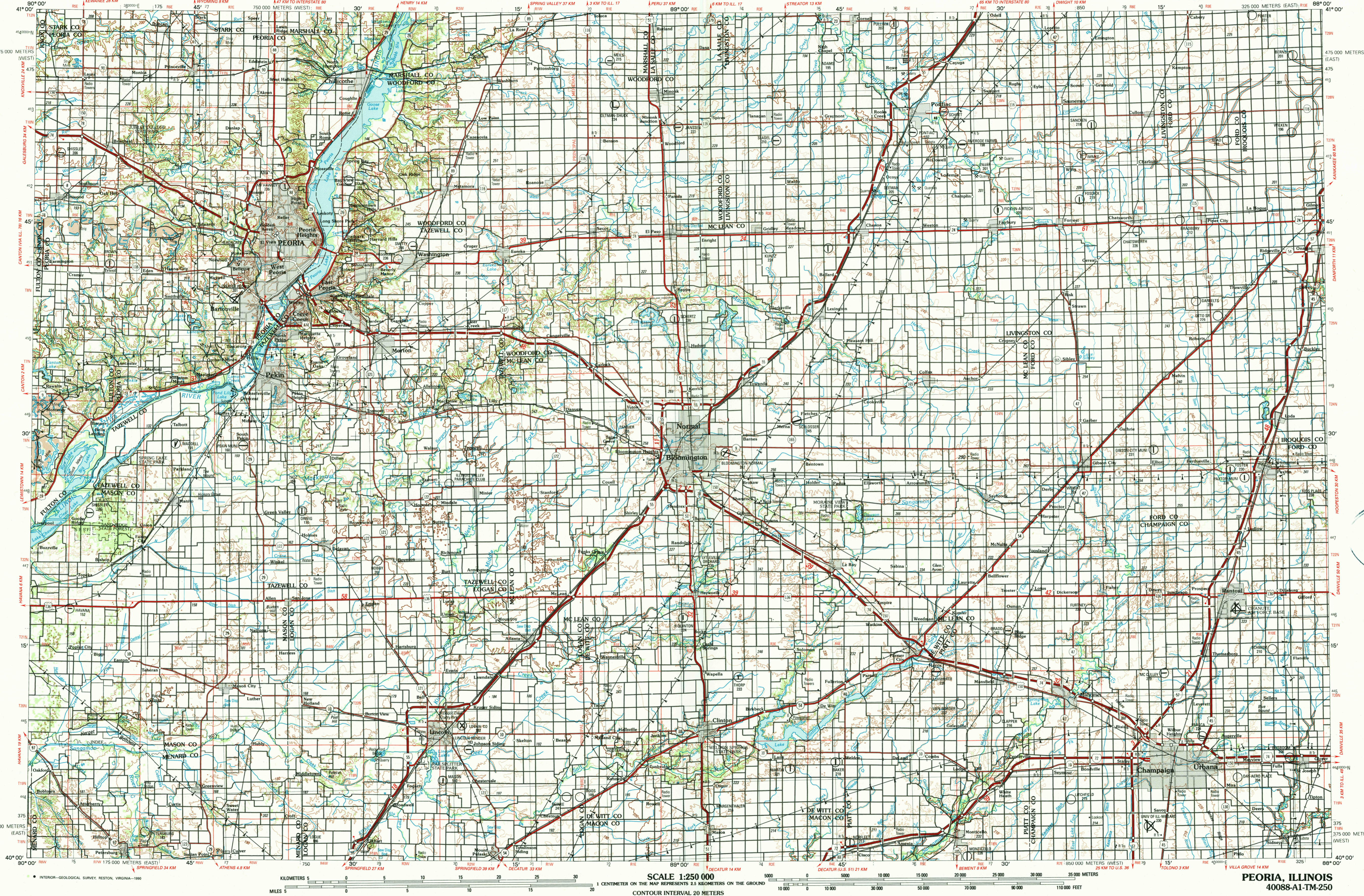
- Dual highway, interchange
Primary highway, hard surface
Secondary highway, hard surface
Light duty road, hard or improved surface
Other road, trail
Route marker: Interstate; U.S.; State
Bridge: overpass, underpass
Tunnel: road, railroad
Railroad: standard gauge; single, multiple track
Bulwark area; locality; elevation
Airport; runway pattern known; unknown
National boundary
State boundary
County boundary
National or State reservation boundary
Land grant boundary
U.S. public lands survey: range, township (surveyed)
U.S. public lands survey: range, township (contracted)
Powerline; pipeline; aboveground, underground
Dam; landmark feature; landmark building
Well; water; other; spring; tank
Cave; mine; quarry; oil platform
Landmark area; landmark rockstack
Disturbed surface: strip mine, low, sand
Contours: index; intermediate; supplementary
Bathymetric contours: index; primary
Bathymetric contours: intermediate; supplementary
Stream, lake; perennial; intermittent
Rapids, large and small; falls, large and small
Land subject to controlled inundation; marsh, swamp
Woodland; orchard, vineyard
Mangrove

Figures in red denote approximate distances in kilometers between markers

A pamphlet describing topographic maps is available on request

PEORIA, ILLINOIS

1 X 2 DEGREE SERIES (TOPOGRAPHIC)



SCALE 1:250 000

CONTOUR INTERVAL 20 METERS
SUPPLEMENTAL CONTOUR INTERVAL 10 METERS

1 CENTIMETER ON THE MAP REPRESENTS 2.5 KILOMETERS ON THE GROUND

0 5 10 15 20 25 30 KILOMETERS

0 5 10 15 20 25 30 35 40 45 50 55 60 65 70 75 80 85 90 95 100 METERS

0 5 10 15 20 25 30 35 40 45 50 55 60 65 70 75 80 85 90 95 100 FEET

PEORIA, ILLINOIS

40088-A1-TM-250

1990