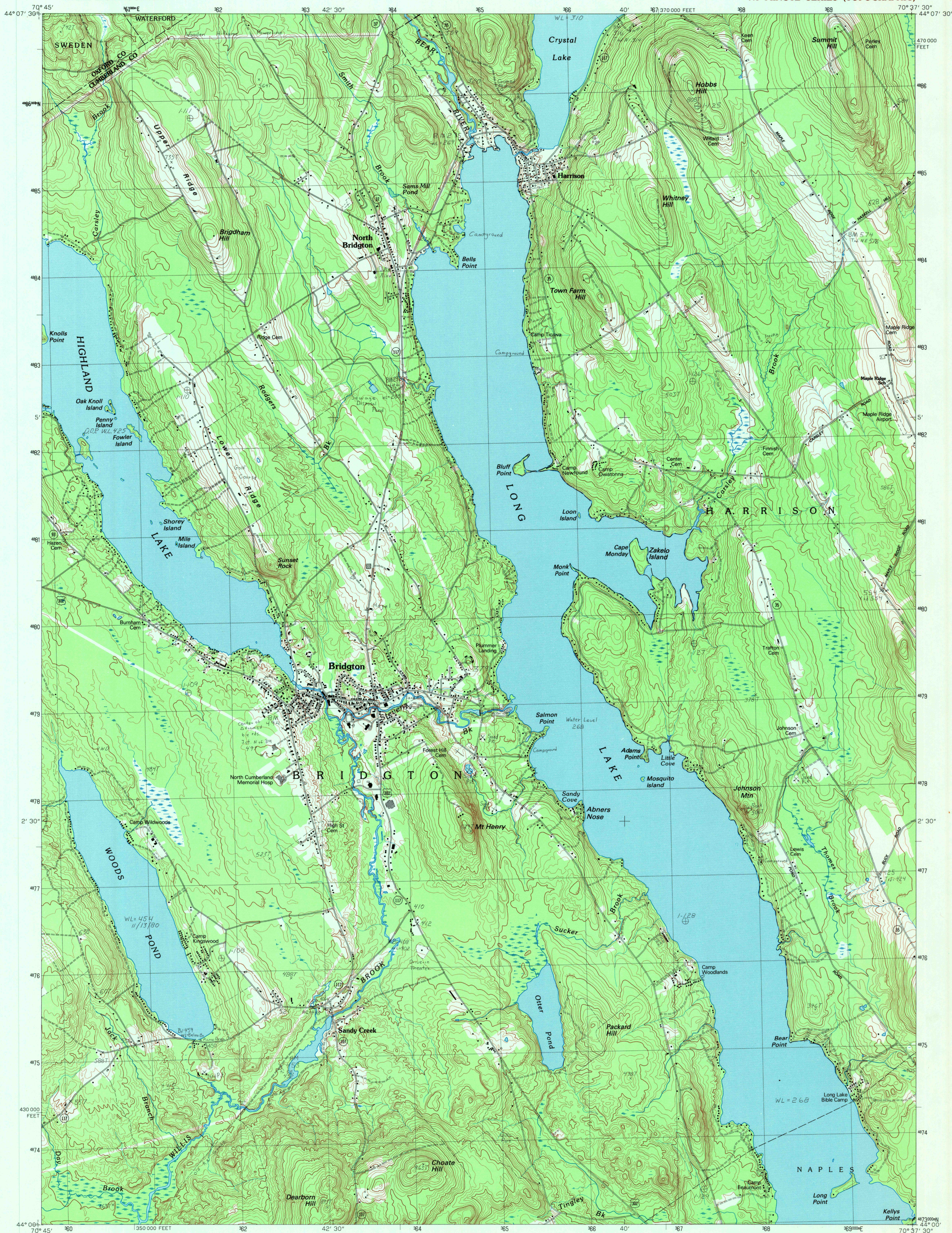


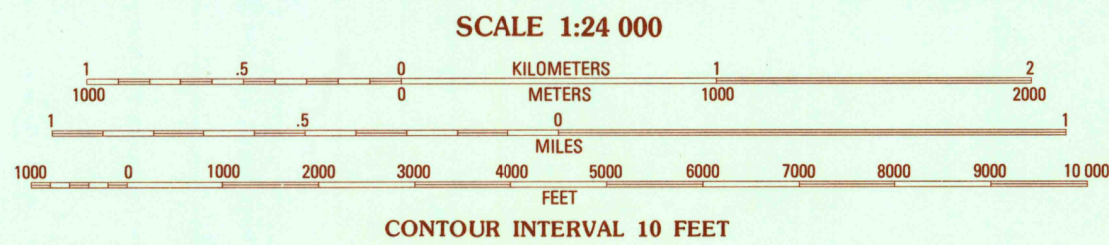
UNITED STATES  
DEPARTMENT OF THE INTERIOR  
GEOLOGICAL SURVEY

BRIDGTON QUADRANGLE  
MAINE  
7.5 MINUTE SERIES (TOPOGRAPHIC)



PRODUCED BY THE UNITED STATES GEOLOGICAL SURVEY  
CONTROL BY: USGS AND NOS/NOAA  
COMPILED FROM AERIAL PHOTOGRAPHS TAKEN: 1978 AND 1979  
FIELD CHECKED: 1981. MAP EDITED: 1983  
PROJECTION: TRANSVERSE MERCATOR  
GRID: 1000-METER UNIVERSAL TRANSVERSE MERCATOR  
10,000-FOOT STATE GRID TICS: MAINE, WEST ZONE  
UTM GRID DECLINATION: 17° WEST  
1983 MAGNETIC NORTH DECLINATION: 17° WEST  
VERTICAL DATUM: NATIONAL GEODETIC VERTICAL DATUM OF 1929  
HORIZONTAL DATUM: 1927 NORTH AMERICAN DATUM  
To place on the predicted North American Datum of 1983, move the projection lines as shown by dashed corner ticks (4 meters south and 41 meters west)  
There may be private inholdings within the boundaries of any Federal and State Reservations shown on this map

**PROVISIONAL MAP**  
Produced from original  
manuscript drawings. Infor-  
mation shown as of date of  
field check



To convert meters to feet multiply by 3.2808  
To convert feet to meters multiply by .3048  
THIS MAP COMPLIES WITH NATIONAL MAP ACCURACY STANDARDS  
FOR SALE BY U.S. GEOLOGICAL SURVEY  
DENVER, COLORADO 80225; OR RESTON, VIRGINIA 22092



1	2	3	1 North Waterford
4	5	2 Waterford Flat	3 Norway
6	7	4 Pleasant Mtn	5 Casco
		6 Hiram	7 North Sebago
		8 Naples	

ADJOINING 7.5' QUADRANGLE NAMES

**ROAD LEGEND**  
Improved Road  
Unimproved Road  
Trail  
Interstate Route  
U.S. Route  
State Route

**BRIDGTON, MAINE**  
PROVISIONAL EDITION 1983

44070-A6-TF-024

USGS NMD HISTORICAL MAP

FEB 03 1989

REC'D FILE COPY