

UNITED STATES
DEPARTMENT OF THE INTERIOR
GEOLOGICAL SURVEY

UNITED STATES
DEPARTMENT OF COMMERCE
COAST AND GEODETIC SURVEY

CHERRYFIELD QUADRANGLE
MAINE
7.5 MINUTE SERIES (TOPOGRAPHIC)
SW/4 CHERRYFIELD 15' QUADRANGLE

(TUNK LAKE)
1:62500

68°00'

57°30'

55'

660 000 FEET

67°52'30"

44°37'30"

ELLSWORTH 25 MI.
FRANKLIN 13 MI.

1:62500

35'

32°30'

250 000 FEET

68°00'

44°30'

(BAR HARBOR)
1:62500

1:62500

1:62500

1:62500

1:62500

1:62500

1:62500

1:62500

1:62500

1:62500

1:62500

1:62500

1:62500

1:62500

1:62500

1:62500

1:62500

1:62500

1:62500

1:62500

1:62500

1:62500

1:62500

1:62500

1:62500

1:62500

1:62500

1:62500

1:62500

1:62500

1:62500

1:62500

1:62500

1:62500

1:62500

1:62500

1:62500

1:62500

1:62500

1:62500

1:62500

1:62500

1:62500

1:62500

1:62500

1:62500

1:62500

1:62500

1:62500

1:62500

1:62500

1:62500

1:62500

1:62500

1:62500

1:62500

1:62500

1:62500

1:62500

1:62500

1:62500

1:62500

1:62500

1:62500

1:62500

1:62500

1:62500

1:62500

1:62500

1:62500

1:62500

1:62500

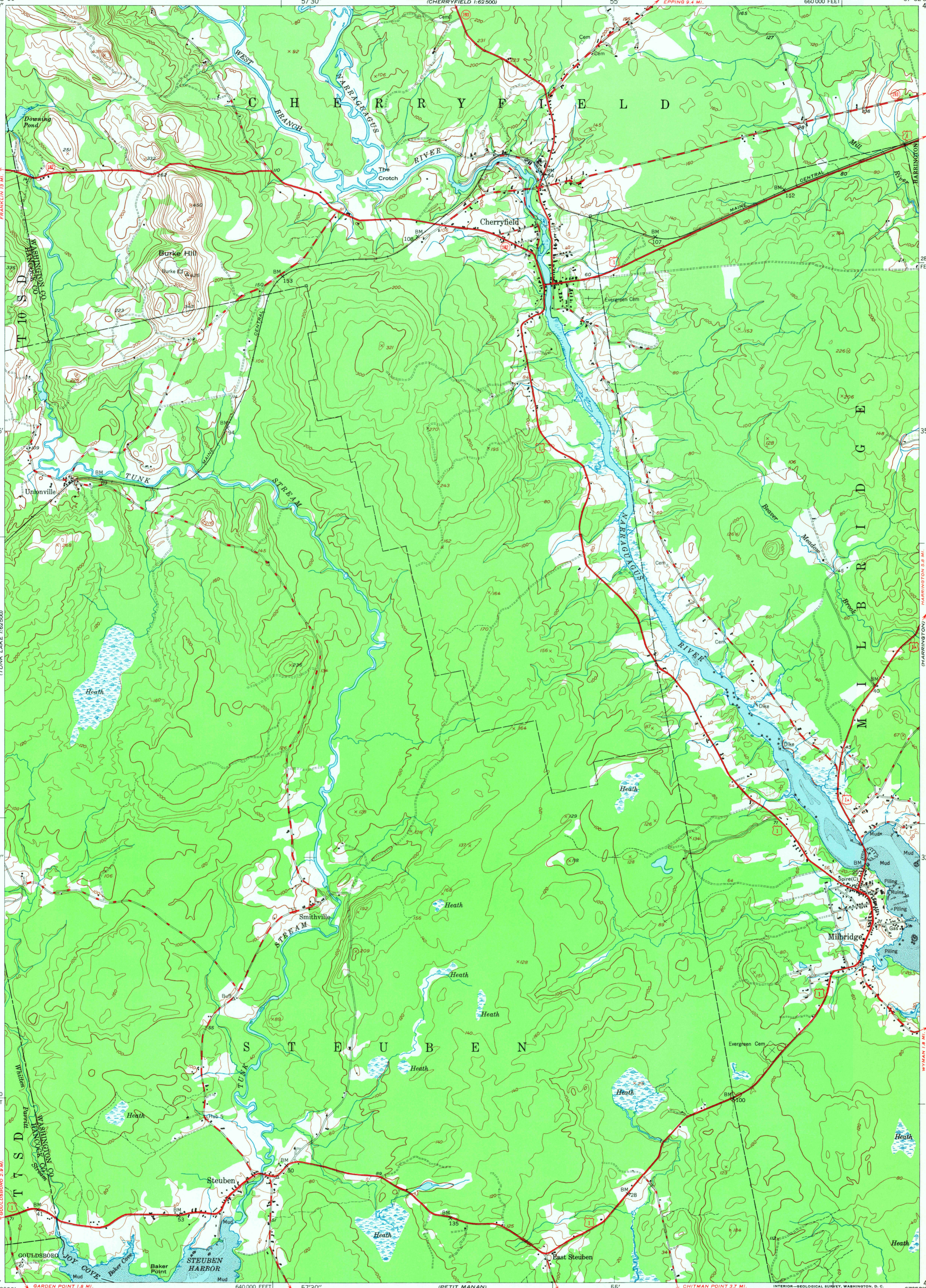
1:62500

1:62500

1:62500

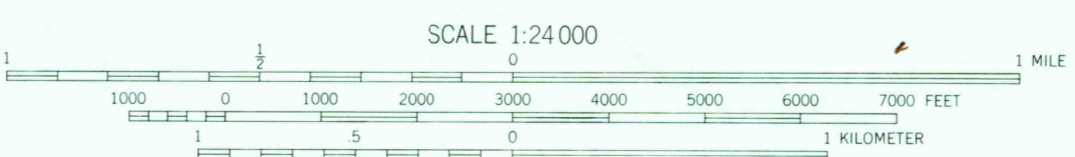
1:62500

1:62500



Maped by U. S. Coast and Geodetic Survey
Edited and published by the Geological Survey
Control by USGS and USC&GS (C)
Topography by plane-table surveys and
from aerial photographs by multiplex methods
Aerial photographs taken 1944 and 1946. Field check 1948
Polyconic projection. 1927 North American datum
10,000-foot grid based on Maine coordinate system,
east zone
No distinction is made between dwellings, barns,
commercial and industrial buildings
Unchecked elevations are shown in brown

194°
TRUE NORTH
MAGNETIC NORTH
APPROXIMATE MEAN
DECLINATION, 1948



CONTOUR INTERVAL 20 FEET
DATUM IS MEAN SEA LEVEL
SHORELINE SHOWN REPRESENTS THE APPROXIMATE LINE OF MEAN HIGH WATER
THE AVERAGE RANGE OF TIDE IS APPROXIMATELY 11 FEET

THIS MAP COMPLIES WITH NATIONAL MAP ACCURACY STANDARDS
FOR SALE BY U. S. GEOLOGICAL SURVEY, WASHINGTON 25, D. C.
A FOLDER DESCRIBING TOPOGRAPHIC MAPS AND SYMBOLS IS AVAILABLE ON REQUEST

USGS
Historical File
Topographic Division

ROAD CLASSIFICATION
HARD-SURFACE ALL WEATHER ROADS
Heavy-duty LANE IS LANE Improved dirt
Medium-duty LANE IS LANE Unimproved dirt
Loose-surface, graded, or narrow hard-surface
U. S. Route State Route
CHERRYFIELD, ME.
SW/4 CHERRYFIELD 15' QUADRANGLE
N4430-W6752.5/7.5
EDITION OF 1950

1620
JUN 17 1974