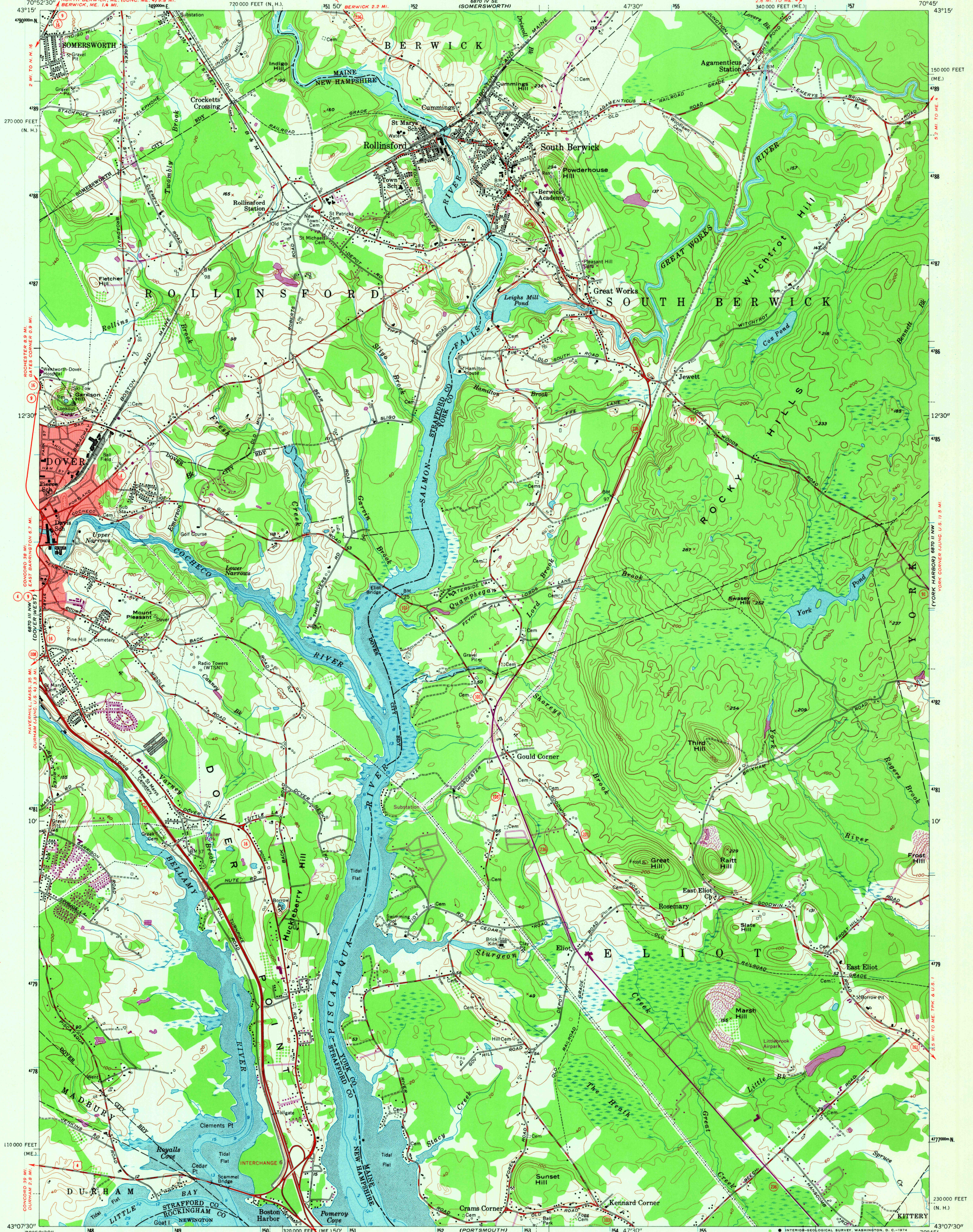


UNITED STATES
DEPARTMENT OF THE INTERIOR
GEOLOGICAL SURVEY

UNITED STATES
DEPARTMENT OF THE ARMY
CORPS OF ENGINEERS

DOVER EAST QUADRANGLE
MAINE-NEW HAMPSHIRE
7.5 MINUTE SERIES (TOPOGRAPHIC)
NE/4 DOVER 15' QUADRANGLE

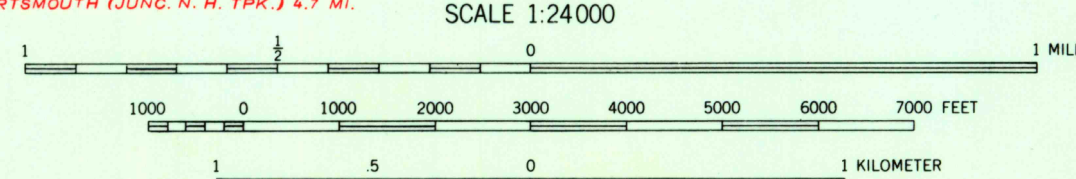
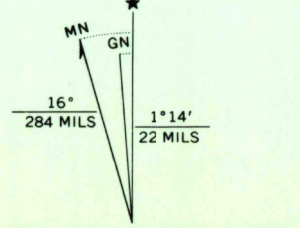


Mapped by the Army Map Service
Edited and published by the Geological Survey
Control by USGS and USC&GS

Culture and drainage in part compiled from aerial photographs
taken 1943. Topography by planetable surveys 1944
Culture revised by the Geological Survey 1956
Hydrography compiled from USC&GS chart 229 (1955)

Polyconic projection. 1927 North American datum
10,000-foot grids based on Maine coordinate system,
west zone, and New Hampshire coordinate system
1000-meter Universal Transverse Mercator grid ticks,
zone 19, shown in blue

Red tint indicates areas in which only
landmark buildings are shown



CONTOUR INTERVAL 20 FEET
DATUM IS MEAN SEA LEVEL
DEPTH CURVES AND SOUNDINGS IN FEET-DATUM IS MEAN LOW WATER
SHORELINE SHOWN REPRESENTS THE APPROXIMATE LINE OF MEAN HIGH WATER
THE MEAN RANGE OF TIDE IS APPROXIMATELY 6.5 FEET

THIS MAP COMPLIES WITH NATIONAL MAP ACCURACY STANDARDS
FOR SALE BY U.S. GEOLOGICAL SURVEY, WASHINGTON, D.C. 20242
A FOLDER DESCRIBING TOPOGRAPHIC MAPS AND SYMBOLS IS AVAILABLE ON REQUEST

ROAD CLASSIFICATION
Heavy-duty ——— Light-duty ———
Medium-duty ——— Unimproved dirt ———
U.S. Route ——— State Route ———



USGS
Historical File
Topographic Division

DOVER EAST, ME.—N. H.
NE/4 DOVER 15' QUADRANGLE
N4307.5—W7045/7.5

1956
PHOTOREVISED 1973
AMS 6870 III NE-SERIES V812

Revisions shown in purple compiled by the Geological Survey from
aerial photographs taken 1973. This information not field checked

MAY 28 1974

3630