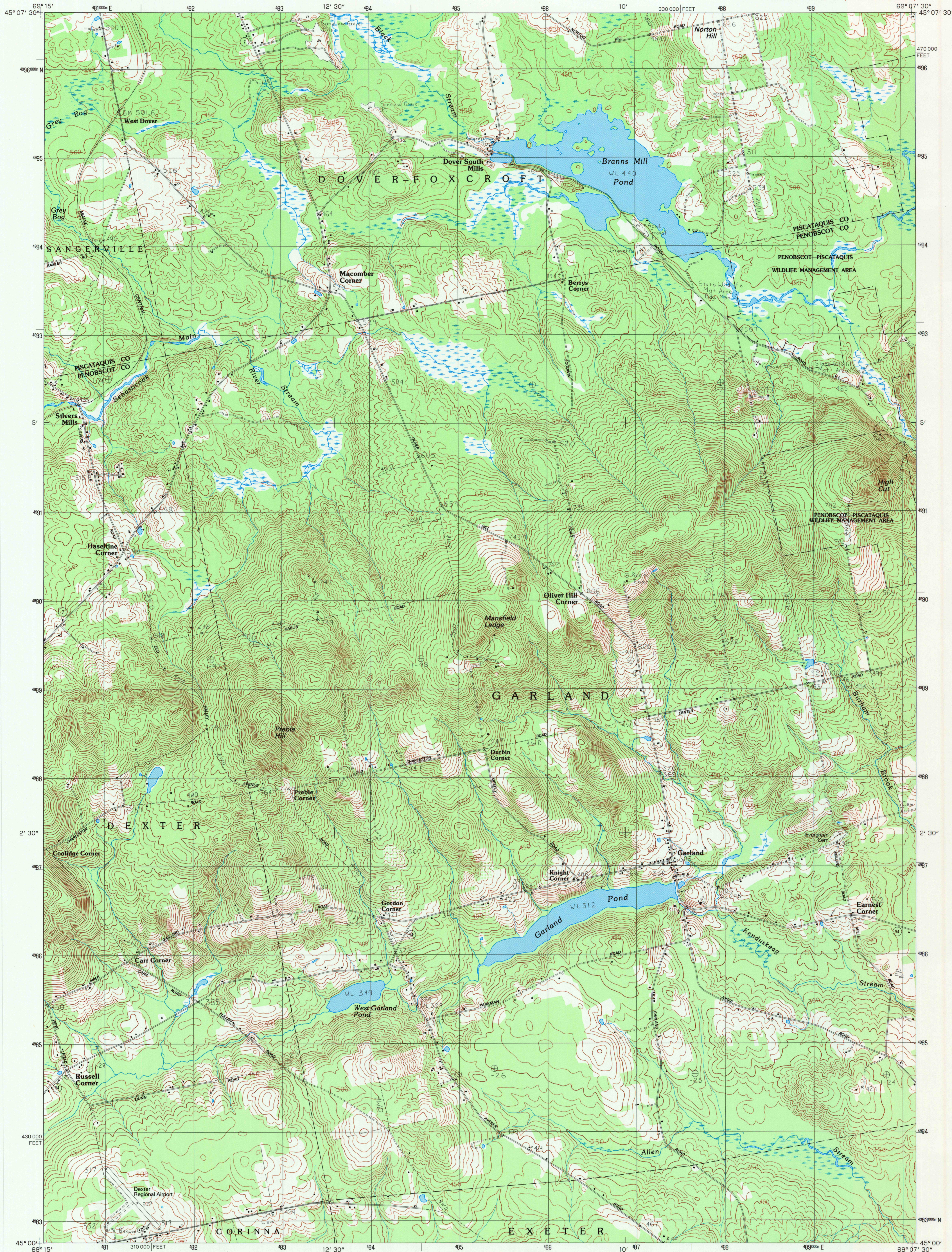


UNITED STATES
DEPARTMENT OF THE INTERIOR
GEOLOGICAL SURVEY

GARLAND QUADRANGLE
MAINE
7.5 MINUTE SERIES (TOPOGRAPHIC)

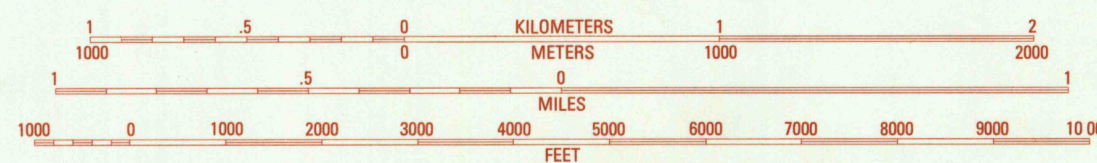


PRODUCED BY THE UNITED STATES GEOLOGICAL SURVEY
CONTROL BY: USGS AND NOS/NOAA
COMPILED FROM AERIAL PHOTOGRAPHS TAKEN: 1980
FIELD CHECKED: 1981. MAP EDITED: 1983
PROJECTION: TRANSVERSE MERCATOR
GRID: 1000-METER UNIVERSAL TRANSVERSE MERCATOR
10,000-FOOT STATE GRID TICS: MAINE, EAST ZONE
UTM GRID DECLINATION: 0° 08' WEST
1983 MAGNETIC NORTH DECLINATION: 19° WEST
VERTICAL DATUM: NATIONAL GEODETTIC VERTICAL DATUM OF 1929
HORIZONTAL DATUM: 1927 NORTH AMERICAN DATUM
To place on the predicted North American Datum of 1983, move
the projection lines as shown by dashed corner ticks (3 meters
south and 43 meters west)
There may be private inholdings within the boundaries of any
Federal and State Reservations shown on this map

PROVISIONAL MAP
Produced from original
manuscript drawings. Information
shown as of date of
field check

THIS MAP COMPLIES WITH NATIONAL MAP ACCURACY STANDARDS
FOR SALE BY U.S. GEOLOGICAL SURVEY, RESTON, VIRGINIA 22092

SCALE 1:24 000



CONTOUR INTERVAL 10 FEET

To convert meters to feet multiply by 3.2808
To convert feet to meters multiply by .3048



QUADRANGLE LOCATION

1	2	3
4	5	6
7	8	9

1 Sangerville
2 Dover-Foxcroft
3 South Sebec
4 Dexter
5 Charleston
6 Corinna
7 Stetson
8 West Corinth

ADJOINING 7.5' QUADRANGLE NAMES

ROAD LEGEND

Improved Road
Unimproved Road
Trail
Interstate Route
U. S. Route
State Route

GARLAND, MAINE

PROVISIONAL EDITION 1983

45069-A2-TF-024

