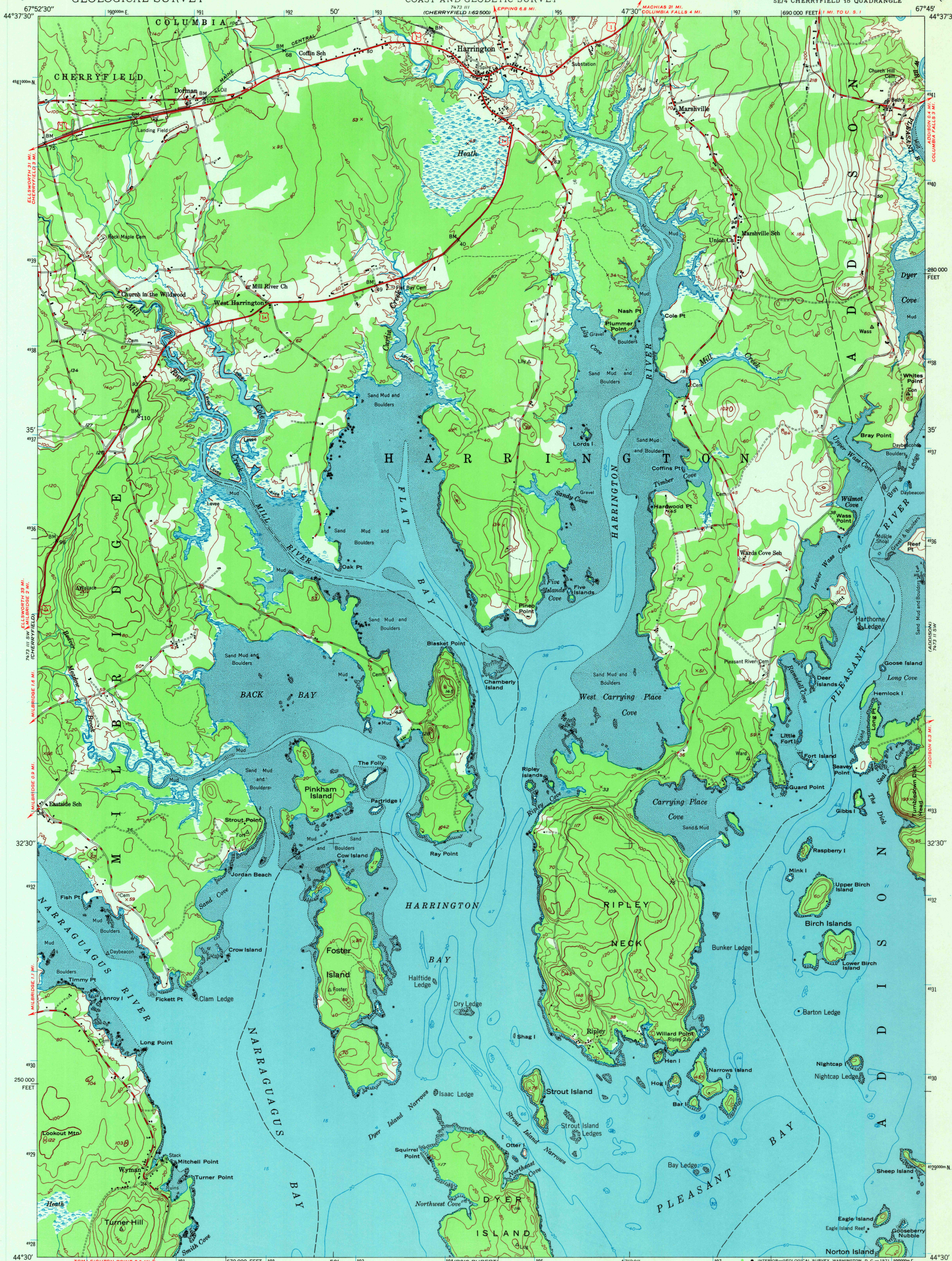


UNITED STATES  
DEPARTMENT OF THE INTERIOR  
GEOLOGICAL SURVEY

UNITED STATES  
DEPARTMENT OF COMMERCE  
COAST AND GEODETIC SURVEY

HARRINGTON QUADRANGLE  
MAINE-WASHINGTON CO.  
7.5 MINUTE SERIES (TOPOGRAPHIC)  
SE/4 CHERRYFIELD 15' QUADRANGLE



Mapped by the U. S. Coast & Geodetic Survey  
Edited and published by the Geological Survey  
Control by USGS and USC&GS

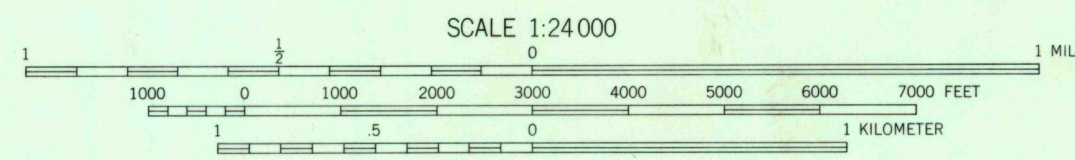
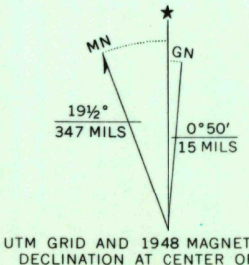
Topography from aerial photographs by multiplex methods  
supplemented by plane-table surveys 1945 and 1946  
Aerial photographs taken 1944. Field check 1948  
Hydrography from surveys dated 1881 to 1931

Polycyclic projection. 1927 North American datum  
10,000-foot grid based on Maine coordinate system,  
east zone

No distinction is made between dwellings, barns,  
commercial and industrial buildings

Unchecked elevations are shown in brown

1000-meter Universal Transverse Mercator grid ticks,  
zone 19, shown in blue



CONTOUR INTERVAL 20 FEET  
DATUM IS MEAN SEA LEVEL

DEPTH CURVES AND SOUNDINGS IN FEET-DATUM IS MEAN LOW WATER  
SHORELINE SHOWN REPRESENTS THE APPROXIMATE LINE OF MEAN HIGH WATER  
THE AVERAGE RANGE OF TIDE IS APPROXIMATELY 11 FEET

THIS MAP COMPLIES WITH NATIONAL MAP ACCURACY STANDARDS  
FOR SALE BY U. S. GEOLOGICAL SURVEY, WASHINGTON, D. C. 20242  
A FOLDER DESCRIBING TOPOGRAPHIC MAPS AND SYMBOLS IS AVAILABLE ON REQUEST

ROAD CLASSIFICATION  
HARD-SURFACE ALL WEATHER ROADS  
Heavy-duty LANE IS LANE  
Medium-duty LANE IS LANE  
Loose-surface, graded, or narrow hard-surface  
U. S. Route  
State Route

HARRINGTON, ME.  
SE/4 CHERRYFIELD 15' QUADRANGLE  
N4430-W6745/7.5

1948

AMS 7473 III SE-SERIES V811

USGS  
HISTORICAL FILE  
TOPOGRAPHIC DIVISION

1730

DEC 7 1971