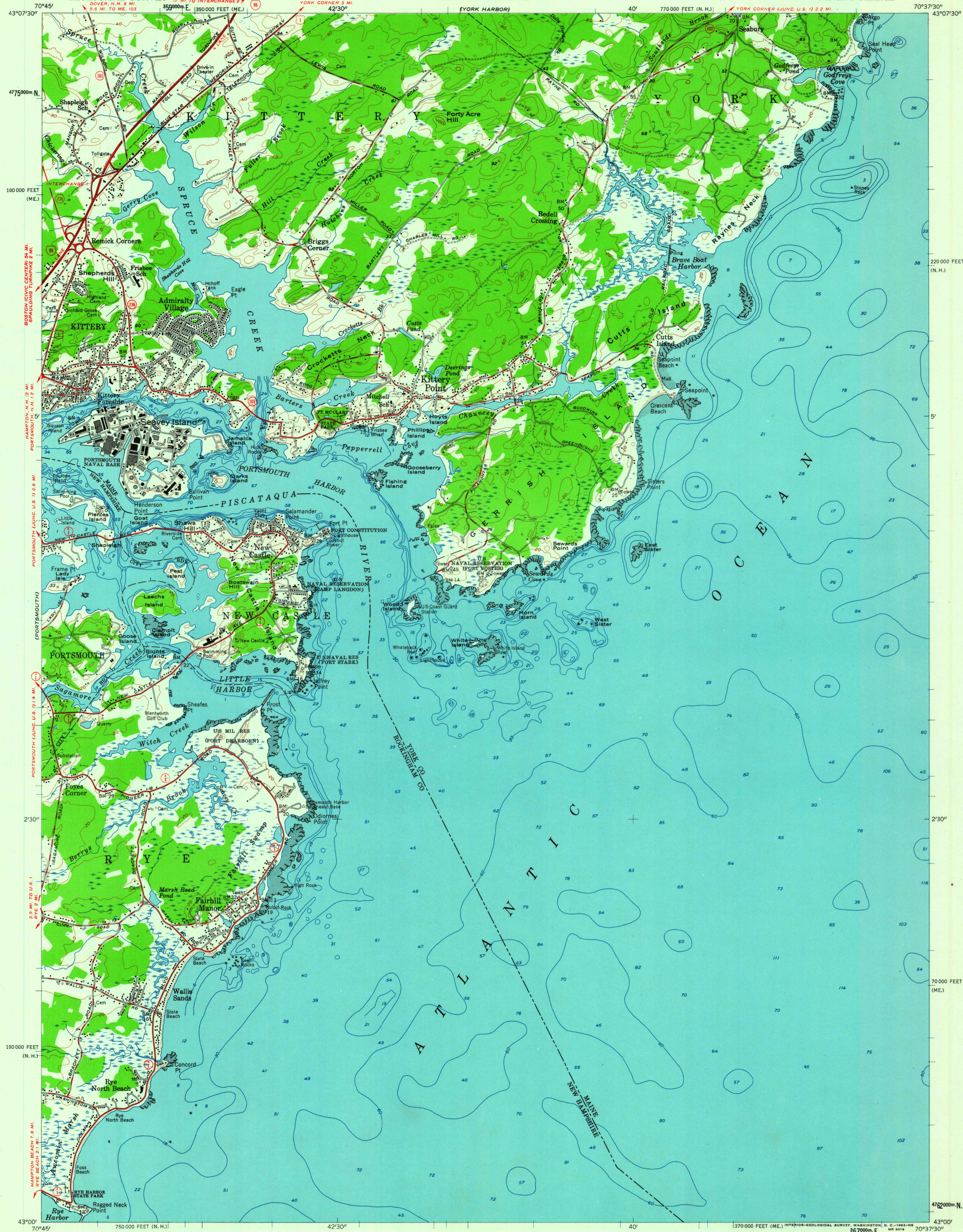


UNITED STATES
DEPARTMENT OF THE INTERIOR
GEOLOGICAL SURVEY

UNITED STATES
DEPARTMENT OF THE ARMY
CORPS OF ENGINEERS

KITTERY QUADRANGLE
MAINE-NEW HAMPSHIRE
7.5 MINUTE SERIES (TOPOGRAPHIC)
SW/4 YORK 15' QUADRANGLE

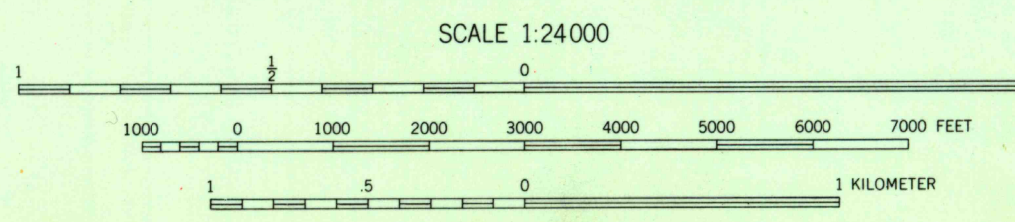
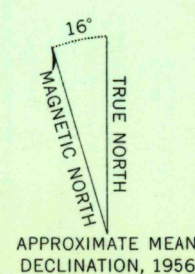


Map by the Army Map Service
Edited and published by the Geological Survey
Control by USC&GS

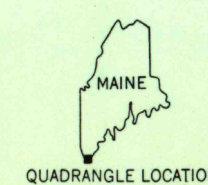
Culture and drainage in part compiled from aerial
photographs taken 1943. Topography by planetable
surveys 1944. Culture revised by the Geological
Survey 1956

Hydrography compiled from USC&GS charts 1205 (1954),
329 (1955), and 1206 (1955)

Polycyclic projection. 1927 North American datum
10,000-foot grids based on Maine coordinate system,
west zone, and New Hampshire coordinate system
1000-meter Universal Transverse Mercator grid ticks,
zone 19, shown in blue



THIS MAP COMPLIES WITH NATIONAL MAP ACCURACY STANDARDS
FOR SALE BY U. S. GEOLOGICAL SURVEY, WASHINGTON 25, D. C.
A FOLDER DESCRIBING TOPOGRAPHIC MAPS AND SYMBOLS IS AVAILABLE ON REQUEST



USCS
Historical File
Topographic Division

ROAD CLASSIFICATION
Heavy-duty ——— Light-duty ———
Medium-duty ——— Unimproved dirt ———
Interstate Route U. S. Route State Route

KITTERY, ME.—N.H.
SW/4 YORK 15' QUADRANGLE
N4300—W7037.5/7.5

1956

SEP 20 1962

5100