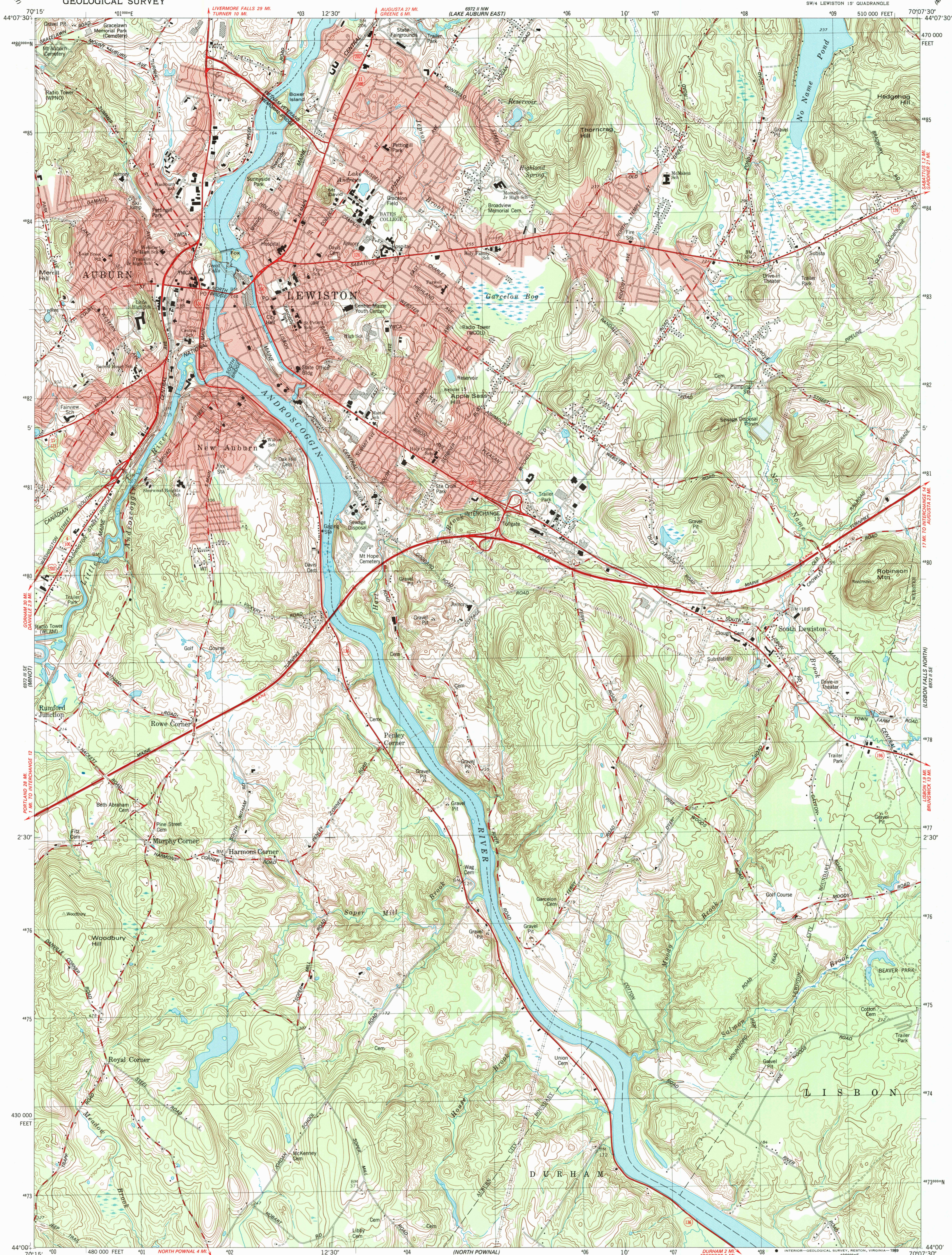


UNITED STATES
DEPARTMENT OF THE INTERIOR
GEOLOGICAL SURVEY

LEWISTON QUADRANGLE
MAINE—ANDROSCOGGIN CO
7.5 MINUTE SERIES (TOPOGRAPHIC)
SW/4 LEWISTON 15' QUADRANGLE



Mapped, edited, and published by the Geological Survey

Control by USGS, NOS/NOAA, and Maine Geodetic Survey

Topography by photogrammetric methods from aerial photographs taken 1973. Field checked 1975. Map edited 1979

Projection and 10,000-foot grid ticks: Maine coordinate system, west zone (transverse Mercator)

1000-meter Universal Transverse Mercator grid, zone 19

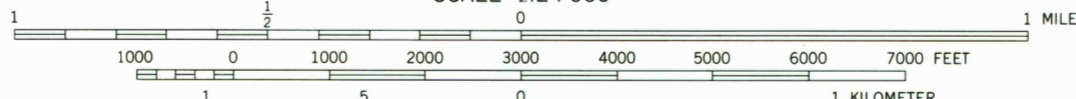
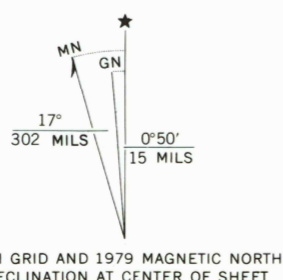
1927 North American Datum

To place on the predicted North American Datum 1983

move the projection lines 4 meters south and

42 meters west as shown by dashed corner ticks

Red tint indicates areas in which only landmark buildings are shown



CONTOUR INTERVAL 10 FEET
NATIONAL GEODETIC VERTICAL DATUM OF 1929

THIS MAP COMPLIES WITH NATIONAL MAP ACCURACY STANDARDS
FOR SALE BY U.S. GEOLOGICAL SURVEY
DENVER, COLORADO 80225, OR RESTON, VIRGINIA 22092
A FOLDER DESCRIBING TOPOGRAPHIC MAPS AND SYMBOLS IS AVAILABLE ON REQUEST

ROAD CLASSIFICATION	
Primary highway, hard surface	Light-duty road, hard or improved surface
Secondary highway, hard surface	Unimproved road
Interstate Route	U.S. Route
	State Route

LEWISTON, MAINE
SW/4 LEWISTON 15' QUADRANGLE
44070-A2-TF-024

1979

DMA 6972 II SW—SERIES V8.11