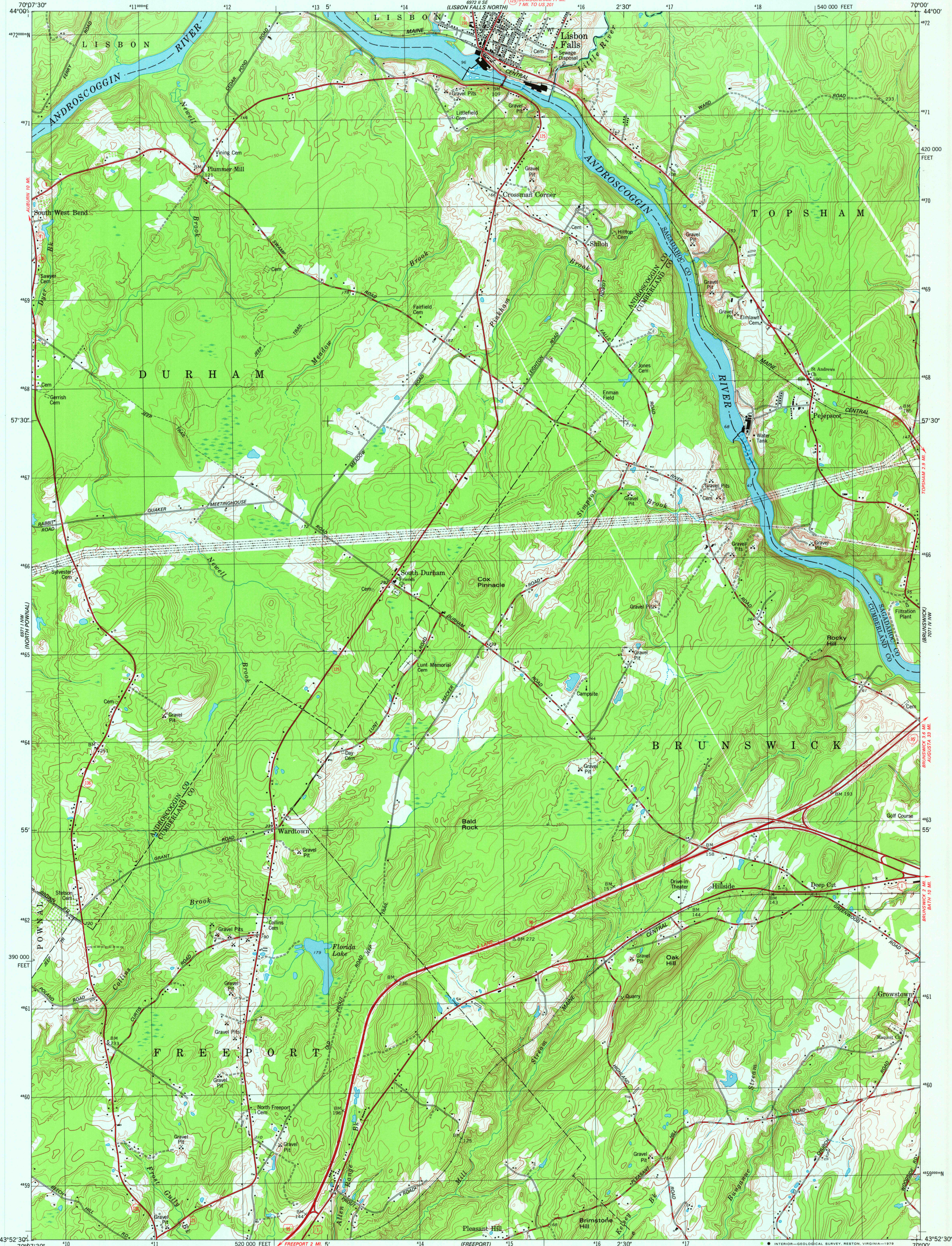


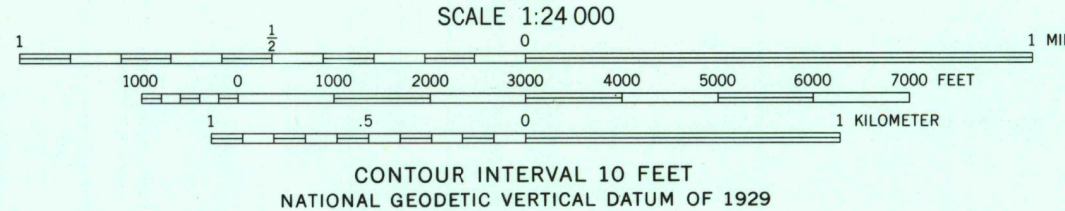
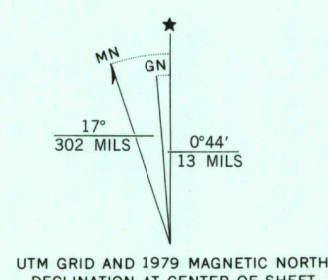
UNITED STATES
DEPARTMENT OF THE INTERIOR
GEOLOGICAL SURVEY



LISBON FALLS SOUTH QUADRANGLE
MAINE
7.5 MINUTE SERIES (TOPOGRAPHIC)
NE/4 FREEPORT 15' QUADRANGLE
NE/4 540 000 FEET



Mapped, edited, and published by the Geological Survey
Control by USGS, NOS/NOAA and Maine Geodetic Survey
Topography by photogrammetric methods from aerial photographs
taken 1973. Field checked 1975. Map edited 1979
Projection and 10,000-foot grid ticks: Maine coordinate
system, west zone (transverse Mercator)
1000-meter Universal Transverse Mercator grid, zone 19
1927 North American datum
To place on the predicted North American Datum 1983
move the projection lines 4 meters south and
42 meters west as shown by dashed corner ticks



CONTOUR INTERVAL 10 FEET
NATIONAL GEODETIC VERTICAL DATUM OF 1929

THIS MAP COMPLIES WITH NATIONAL MAP ACCURACY STANDARDS
FOR SALE BY U. S. GEOLOGICAL SURVEY, RESTON, VIRGINIA 22092
A FOLDER DESCRIBING TOPOGRAPHIC MAPS AND SYMBOLS IS AVAILABLE ON REQUEST



ROAD CLASSIFICATION
Primary highway
hard surface
Secondary highway,
hard surface
Light-duty road, hard or
improved surface
Unimproved road
Interstate Route
U. S. Route
State Route

LISBON FALLS SOUTH, MAINE
NE/4 FREEPORT 15' QUADRANGLE
N4352.5-W7000.7.5

1979

DMA 6971 1 NE-SERIES V811

USGS
Historical File
Topographic Division

NOV 19 1978

1800