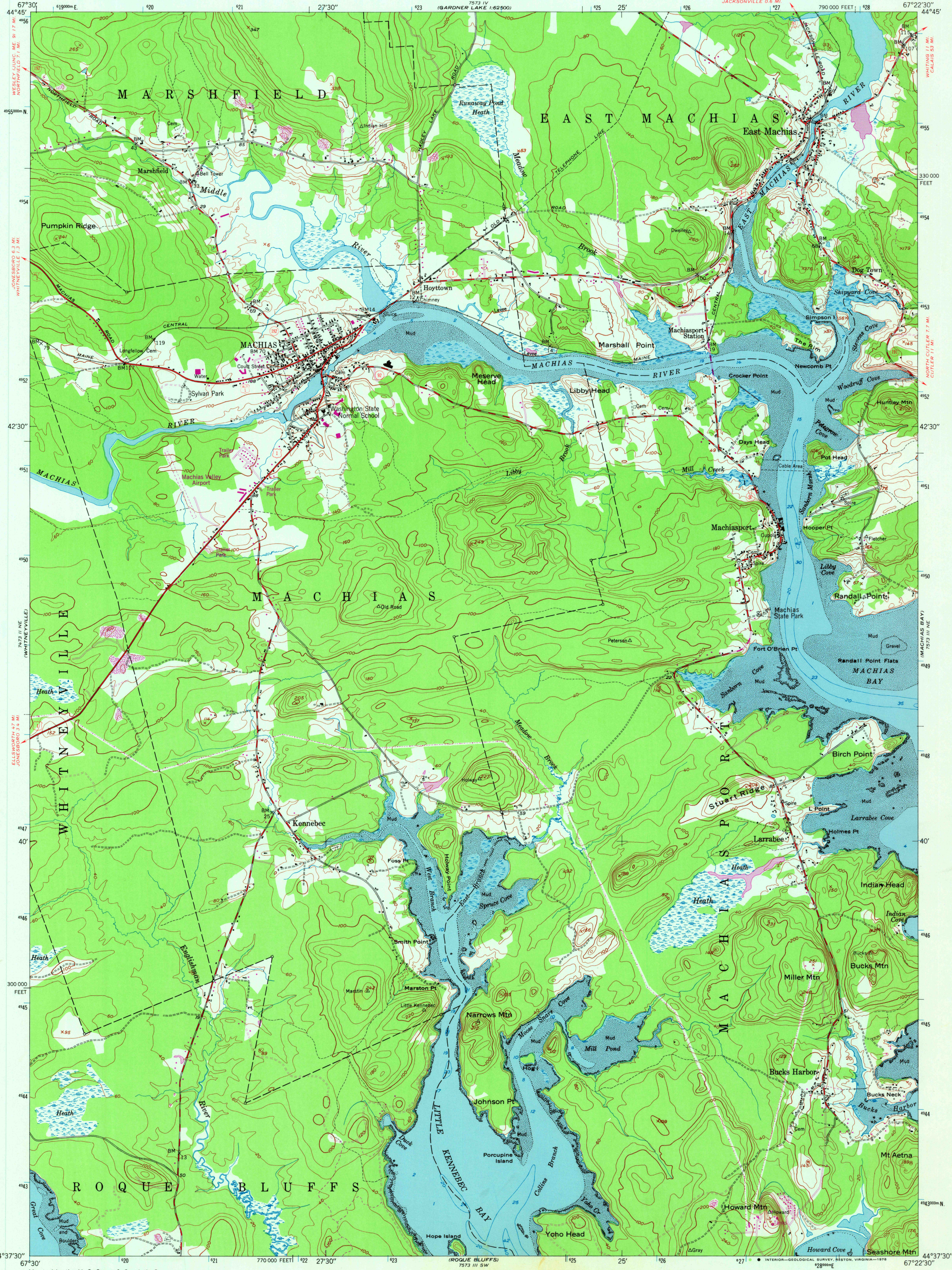


UNITED STATES
DEPARTMENT OF THE INTERIOR
GEOLOGICAL SURVEY

UNITED STATES
DEPARTMENT OF COMMERCE
COAST AND GEODETIC SURVEY

MACHIAS QUADRANGLE
MAINE-WASHINGTON CO.
7.5 MINUTE SERIES (TOPOGRAPHIC)
NW/4 MACHIAS 15' QUADRANGLE



Maped by the U. S. Coast & Geodetic Survey
Edited and published by the Geological Survey
Control by USC&GS, USGS, and MIT

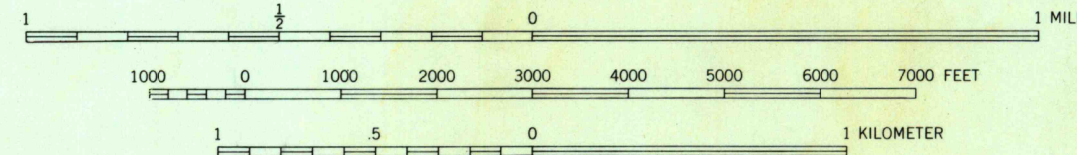
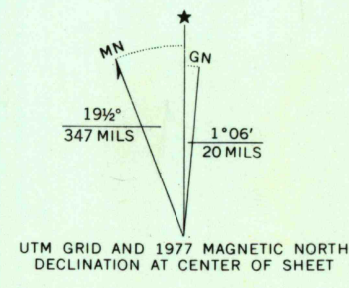
Topography from aerial photographs by multiplex methods
Aerial photographs taken 1944 and 1946. Field check 1949
Hydrography from surveys dated 1885 and 1916

Polyconic projection. 1927 North American datum
10,000-foot grid based on Maine coordinate system,
east zone

Unchecked elevations are shown in brown

1000-meter Universal Transverse Mercator grid ticks,
zone 19, shown in blue

Revisions shown in purple compiled by Geological Survey from aerial
photographs taken 1975. This information not field checked. Map edited 1977



CONTOUR INTERVAL 20 FEET
NATIONAL GEODETIC VERTICAL DATUM OF 1929

DEPTH CURVES AND SOUNDINGS IN FEET—DATUM IS MEAN LOW WATER
SHORELINE SHOWN REPRESENTS THE APPROXIMATE LINE OF MEAN HIGH WATER
THE AVERAGE RANGE OF TIDE IS APPROXIMATELY 13 FEET

THIS MAP COMPLIES WITH NATIONAL MAP ACCURACY STANDARDS
FOR SALE BY U. S. GEOLOGICAL SURVEY, RESTON, VA. 22092
A FOLDER DESCRIBING TOPOGRAPHIC MAPS AND SYMBOLS IS AVAILABLE ON REQUEST

ROAD CLASSIFICATION
Heavy-duty ——— Light-duty ———
Medium-duty ——— Unimproved dirt ———
U. S. Route ——— State Route ———



MACHIAS, ME.
NW/4 MACHIAS 15' QUADRANGLE
N4437.5—W6722.5/7.5
PHOTOREVISED 1977
1949

USGS
Historical File
Topographic Division

AMS 7573 III NW—SERIES V81 I

AUG 01 1978

3300