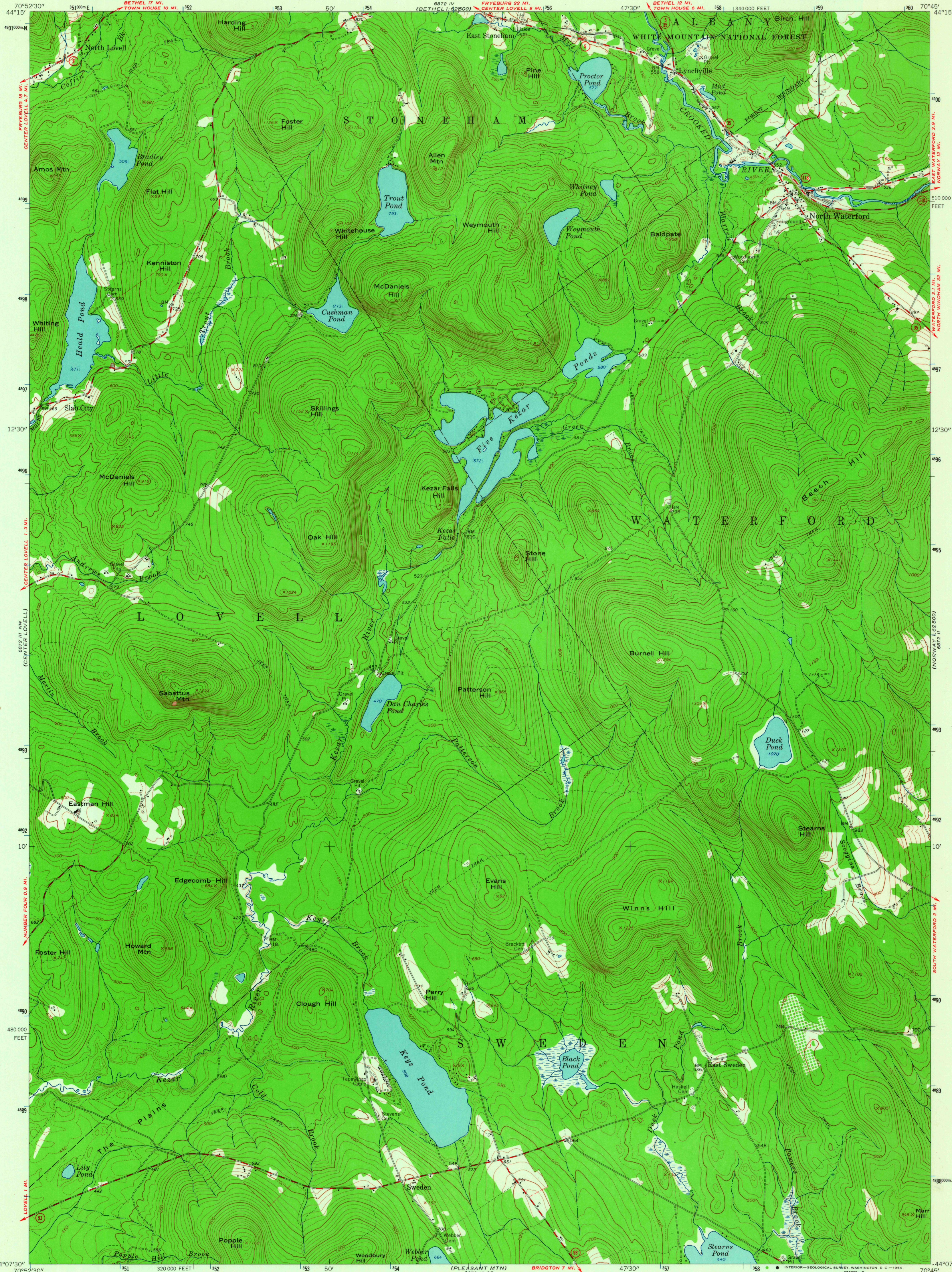


UNITED STATES
DEPARTMENT OF THE INTERIOR
GEOLOGICAL SURVEY

NORTH WATERFORD QUADRANGLE
MAINE—OXFORD CO.
7.5 MINUTE SERIES (TOPOGRAPHIC)
NE/4 FRYEBURG 15' QUADRANGLE

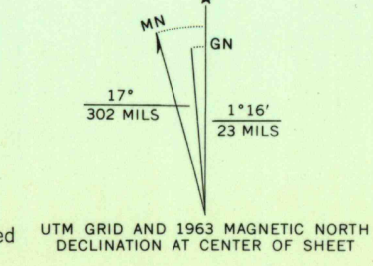


Maped, edited, and published by the Geological Survey
Control by USGS and USC&GS

Topography by photogrammetric methods from aerial
photographs taken 1961. Field checked 1963

Polyconic projection. 1927 North American datum
10,000-foot grid based on Maine coordinate system, west zone
1000-meter Universal Transverse Mercator grid ticks,
zone 19, shown in blue

Fine red dashed lines indicate selected fence and field lines where
generally visible on aerial photographs. This information is unchecked

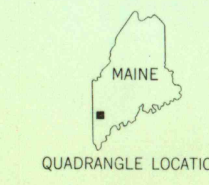


SCALE 1:24,000
1 1000 0 1000 2000 3000 4000 5000 6000 7000 FEET
1 5 0 5 10 KILOMETER

CONTOUR INTERVAL 20 FEET
DOTTED LINES REPRESENT 10-FOOT CONTOURS
DATUM IS MEAN SEA LEVEL

THIS MAP COMPLIES WITH NATIONAL MAP ACCURACY STANDARDS
FOR SALE BY U.S. GEOLOGICAL SURVEY, WASHINGTON 25, D.C.
A FOLDER DESCRIBING TOPOGRAPHIC MAPS AND SYMBOLS IS AVAILABLE ON REQUEST

ROAD CLASSIFICATION
Medium-duty ——— Light-duty ———
Unimproved dirt ———
State Route



NORTH WATERFORD, MAINE
NE/4 FRYEBURG 15' QUADRANGLE
N4407.5—W7045/7.5

1963
AMS 6872 III NE—SERIES V811

U.S.G.S.
FILE COPY
TOPOGRAPHIC DIVISION

NOV 23 1964

3260