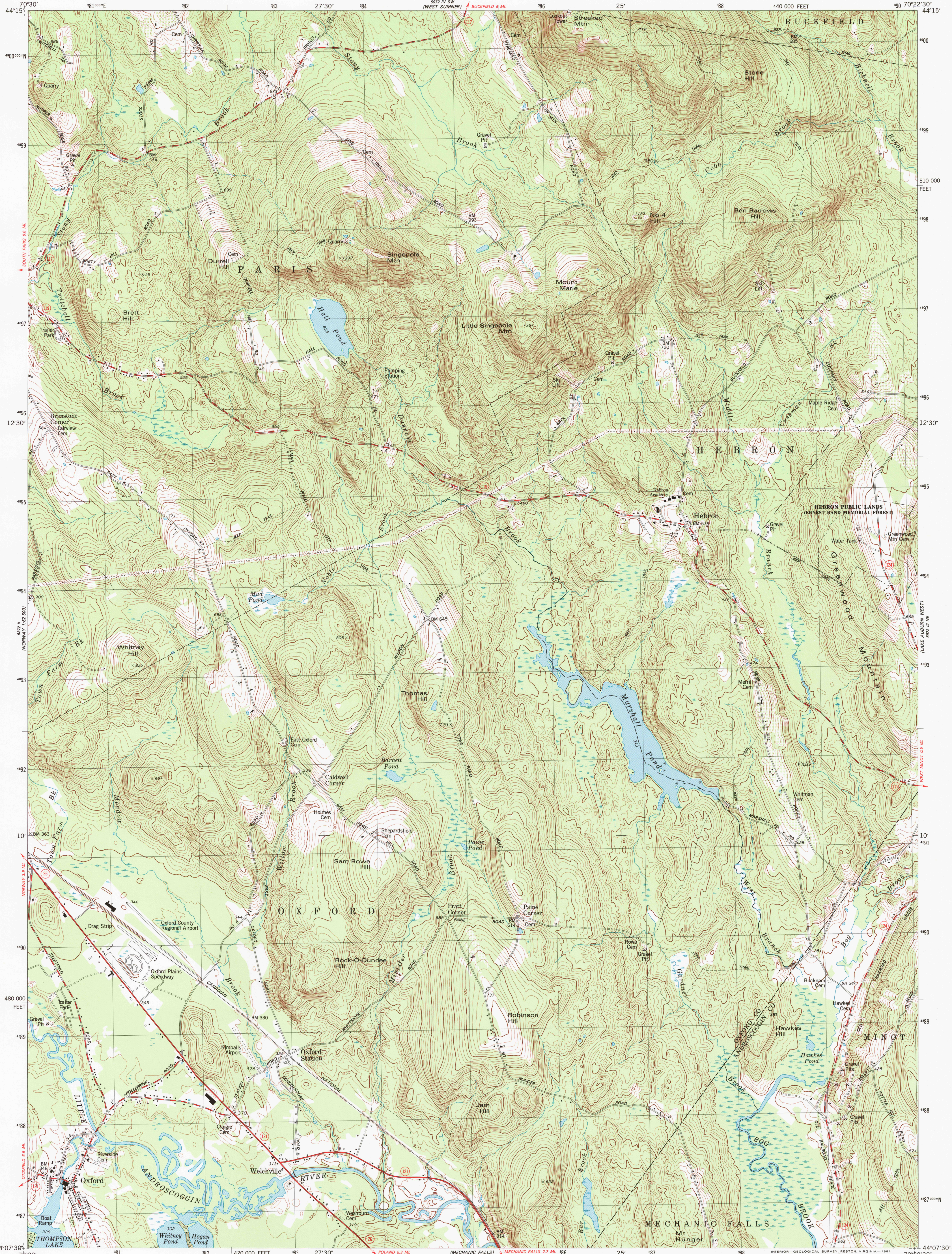
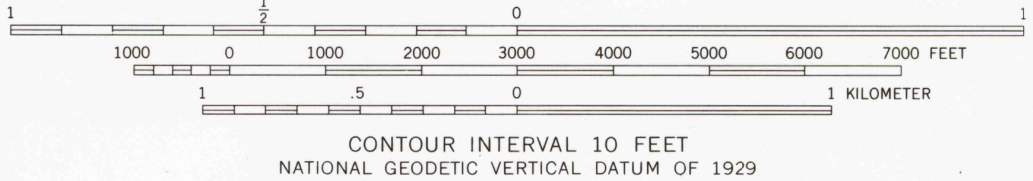
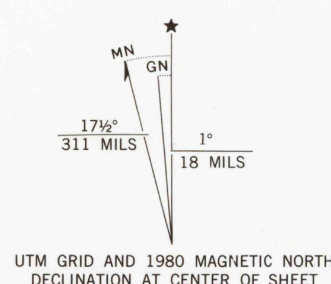


UNITED STATES
DEPARTMENT OF THE INTERIOR
GEOLOGICAL SURVEY

OXFORD QUADRANGLE
MAINE
7.5 MINUTE SERIES (TOPOGRAPHIC)
NW/4 POLAND 15' QUADRANGLE



Mapped, edited, and published by the Geological Survey
Control by USGS and NOS/NOAA
Topography by photogrammetric methods from aerial photographs taken 1973. Field checked 1975. Map edited 1980
Projection and 10,000-foot grid ticks: Maine coordinate system, west zone (transverse Mercator)
1000-meter Universal Transverse Mercator grid, zone 19 1927 North American Datum
To place on the predicted North American Datum 1983 move the projection lines 4 meters south and 41 meters west as shown by dashed corner ticks
There may be private inholdings within the boundaries of the National or State reservations shown on this map



ROAD CLASSIFICATION
Primary highway, hard surface
Secondary highway, hard surface
Light-duty road, hard or improved surface
Unimproved road
Interstate Route
U.S. Route
State Route



THIS MAP COMPLIES WITH NATIONAL MAP ACCURACY STANDARDS
FOR SALE BY U.S. GEOLOGICAL SURVEY
DENVER, COLORADO 80225, OR RESTON, VIRGINIA 22092
A FOLDER DESCRIBING TOPOGRAPHIC MAPS AND SYMBOLS IS AVAILABLE ON REQUEST

OXFORD, MAINE
NW/4 POLAND 15' QUADRANGLE
N4407.5-W7022.5/7.5
1980
DMA 6972 III NW-SERIES V811

