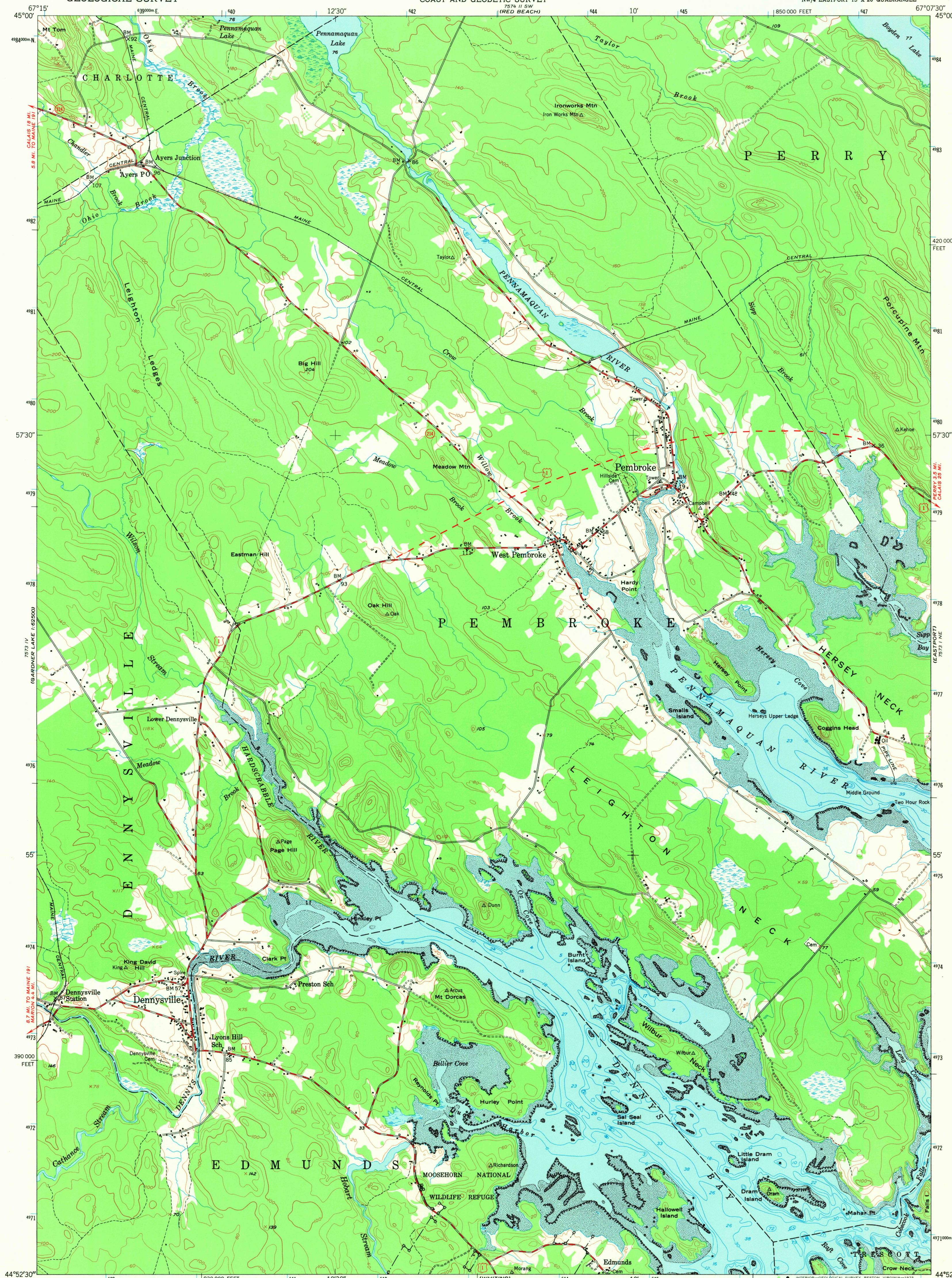


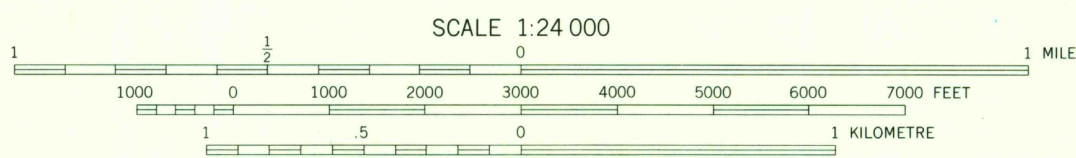
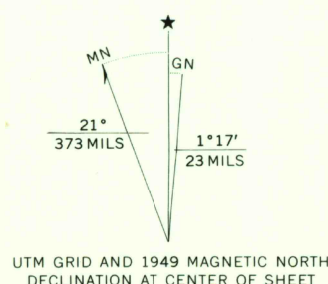
UNITED STATES
DEPARTMENT OF THE INTERIOR
GEOLOGICAL SURVEY

UNITED STATES
DEPARTMENT OF COMMERCE
COAST AND GEODETIC SURVEY

PEMBROKE QUADRANGLE
MAINE-WASHINGTON CO.
7.5 MINUTE SERIES (TOPOGRAPHIC)
NW/4 EASTPORT 15' X 20' QUADRANGLE



Maped by the U. S. Coast & Geodetic Survey
Edited and published by the Geological Survey
Control by USC&GS, USGS, and MIT
Topography from aerial photographs by multiplex methods
Aerial photographs taken 1946. Field check 1949
Hydrography compiled from USC&GS chart 801, 1949
Polyconic projection. 1927 North American datum
10,000-foot grid based on Maine coordinate system,
east zone
1000-metre Universal Transverse Mercator grid ticks,
zone 19, shown in blue



CONTOUR INTERVAL 20 FEET
NATIONAL GEODETIC VERTICAL DATUM OF 1929
DEPTH CURVES AND SOUNDINGS IN FEET-DATUM IS MEAN LOW WATER
SHORELINE SHOWN REPRESENTS THE APPROXIMATE LINE OF MEAN HIGH WATER
THE AVERAGE RANGE OF TIDE IS APPROXIMATELY 18 FEET
THIS MAP COMPLIES WITH NATIONAL MAP ACCURACY STANDARDS
FOR SALE BY U. S. GEOLOGICAL SURVEY, RESTON, VIRGINIA 22092
A FOLDER DESCRIBING TOPOGRAPHIC MAPS AND SYMBOLS IS AVAILABLE ON REQUEST



ROAD CLASSIFICATION
USC&GS T-8790
Medium-duty ——— Light-duty ———
Unimproved dirt ———
U. S. Route ——— State Route ———

PEMBROKE, ME.
NW/4 EASTPORT 15' X 20' QUADRANGLE
N4452.5-W6707.5/7.5

1949
AMS 7573 I NW-SERIES V811

USGS
HISTORICAL FILE
TOPOGRAPHIC DIVISION