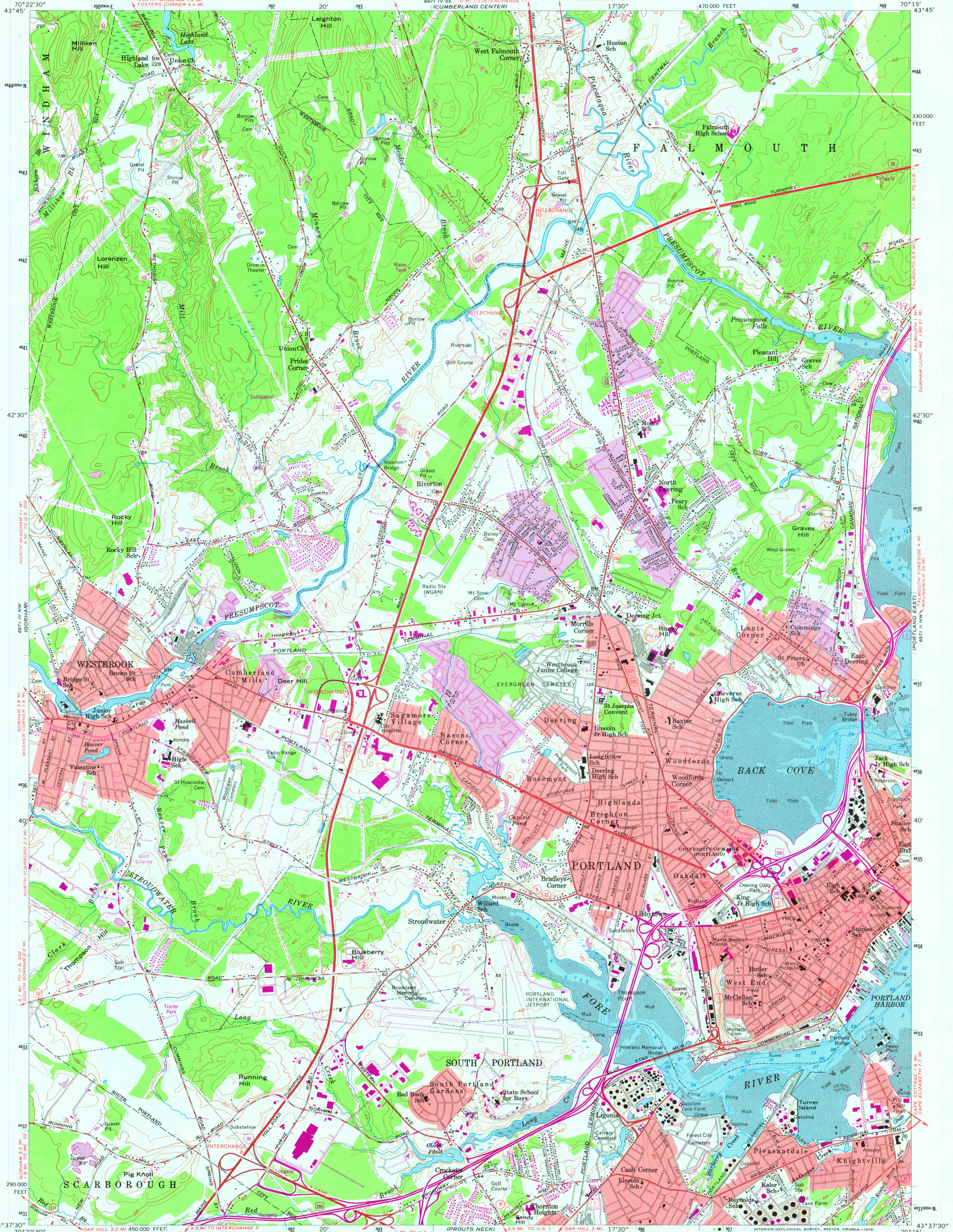


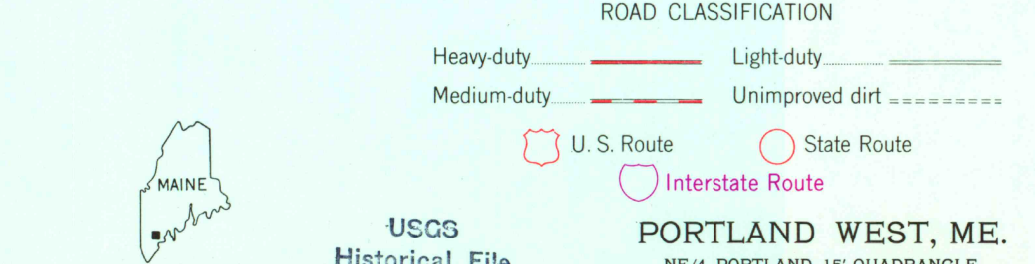
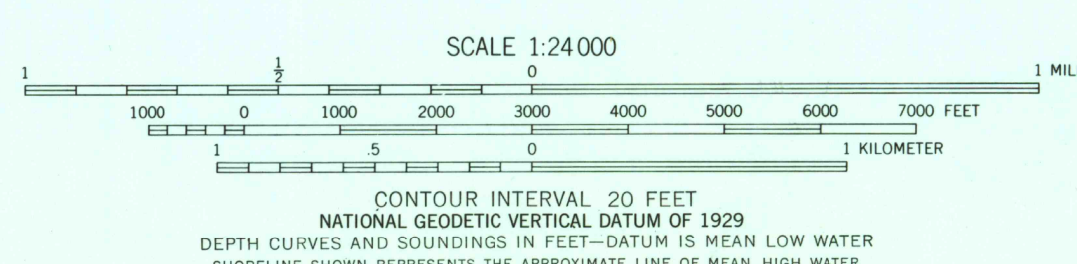
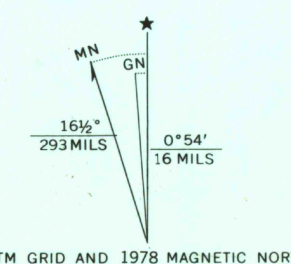
UNITED STATES
DEPARTMENT OF THE INTERIOR
GEOLOGICAL SURVEY

UNITED STATES
DEPARTMENT OF THE ARMY
CORPS OF ENGINEERS

PORTLAND WEST QUADRANGLE
MAINE - CUMBERLAND CO.
7.5 MINUTE SERIES (TOPOGRAPHIC)
NE 4 PORTLAND 15' QUADRANGLE



Mapped by the Army Map Service
Edited and published by the Geological Survey
Control by USGS, USC&GS, and USCE
Culture and drainage in part compiled from aerial
photographs taken 1943
Topography by plane table surveys 1944
Culture revised by the Geological Survey by photogrammetric
methods from aerial photographs taken 1956. Field check 1956
Selected hydrographic data compiled from USC&GS chart 325 (1955)
This information is not intended for navigational purposes
Polyconic projection. 1927 North American datum
10,000-foot grid based on Maine coordinate system, west zone
1000-meter Universal Transverse Mercator grid ticks,
zone 19, shown in blue
Red tint indicates areas in which only landmark buildings are shown



USGS
Historical File
Topographic Division

PORTLAND WEST, ME.
NE 4 PORTLAND 15' QUADRANGLE
N4337.5-W7015.7.5

1956
PHOTOREVISED 1978
AMS 6971 III NE-SERIES V811

THIS MAP COMPLIES WITH NATIONAL MAP ACCURACY STANDARDS
FOR SALE BY U.S. GEOLOGICAL SURVEY, RESTON, VIRGINIA 22092
A FOLDER DESCRIBING TOPOGRAPHIC MAPS AND SYMBOLS IS AVAILABLE ON REQUEST

Revisions shown in purple compiled by the Geological Survey
from aerial photographs taken 1975. This information
not field checked. Map edited 1978

OCT 13 1978
400