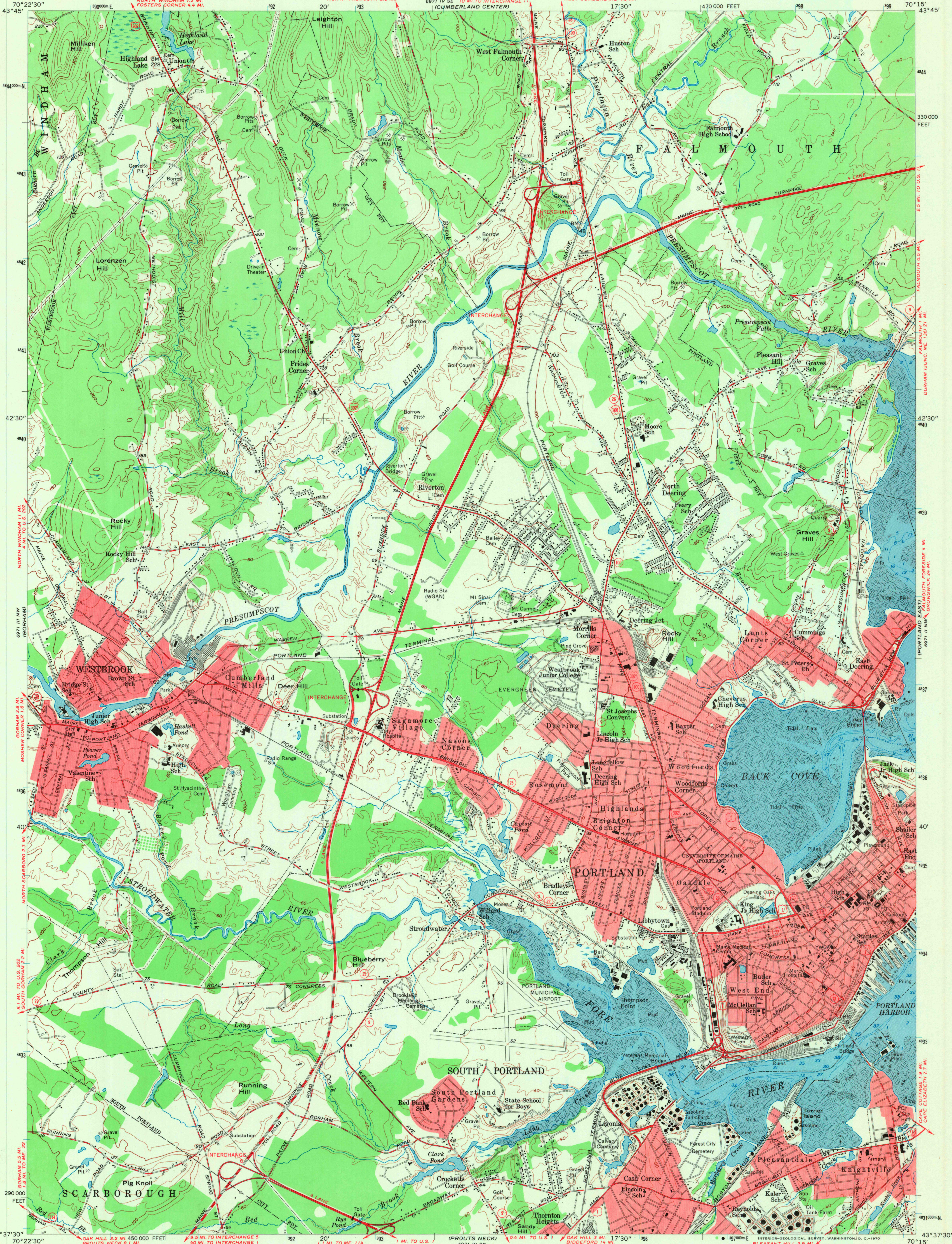


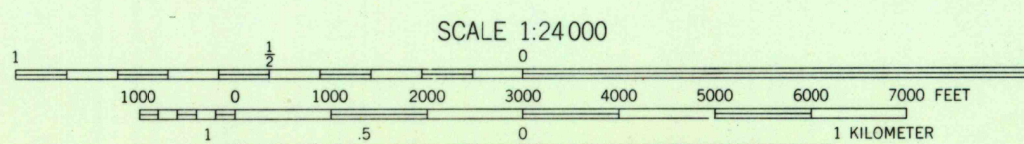
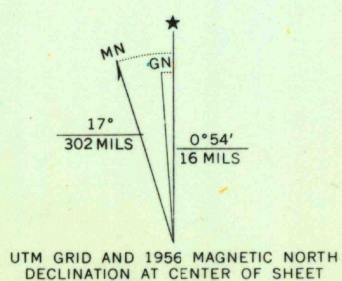
UNITED STATES  
DEPARTMENT OF THE INTERIOR  
GEOLOGICAL SURVEY

UNITED STATES  
DEPARTMENT OF THE ARMY  
CORPS OF ENGINEERS

PORTLAND WEST QUADRANGLE  
MAINE - CUMBERLAND CO.  
7.5 MINUTE SERIES (TOPOGRAPHIC)  
NE 1/4 PORTLAND 15' QUADRANGLE



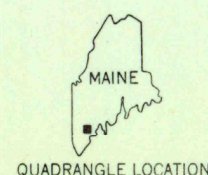
Mapped by the Army Map Service  
Edited and published by the Geological Survey  
Control by USGS, USC&GS, and USCE  
Culture and drainage in part compiled from aerial  
photographs taken 1943  
Topography by plane-table surveys 1944  
Culture revised by the Geological Survey by photogrammetric  
methods from aerial photographs taken 1956. Field check 1956  
Polyconic projection. 1927 North American datum  
10,000-foot grid based on Maine coordinate system.  
1000-meter Universal Transverse Mercator grid ticks,  
zone 19, shown in blue  
Red tint indicates areas in which only  
landmark buildings are shown



CONTOUR INTERVAL 20 FEET  
DATUM IS MEAN SEA LEVEL  
DEPTH CURVES AND SOUNDINGS IN FEET—DATUM IS MEAN LOW WATER  
SHORELINE SHOWN REPRESENTS THE APPROXIMATE LINE OF MEAN HIGH WATER  
THE MEAN RANGE OF TIDE IS APPROXIMATELY 8.9 FEET

THIS MAP COMPLIES WITH NATIONAL MAP ACCURACY STANDARDS  
FOR SALE BY U.S. GEOLOGICAL SURVEY, WASHINGTON, D.C. 20242  
A FOLDER DESCRIBING TOPOGRAPHIC MAPS AND SYMBOLS IS AVAILABLE ON REQUEST

ROAD CLASSIFICATION  
Heavy-duty ——— Light-duty ———  
Medium-duty ——— Unimproved dirt ———  
U.S. Route ——— State Route ———



PORTLAND WEST, ME.  
NE 1/4 PORTLAND 15' QUADRANGLE  
N4337.5—W7015.7.5

1956  
AMS 6971 III NE—SERIES V811

1075  
DEC 11 1959