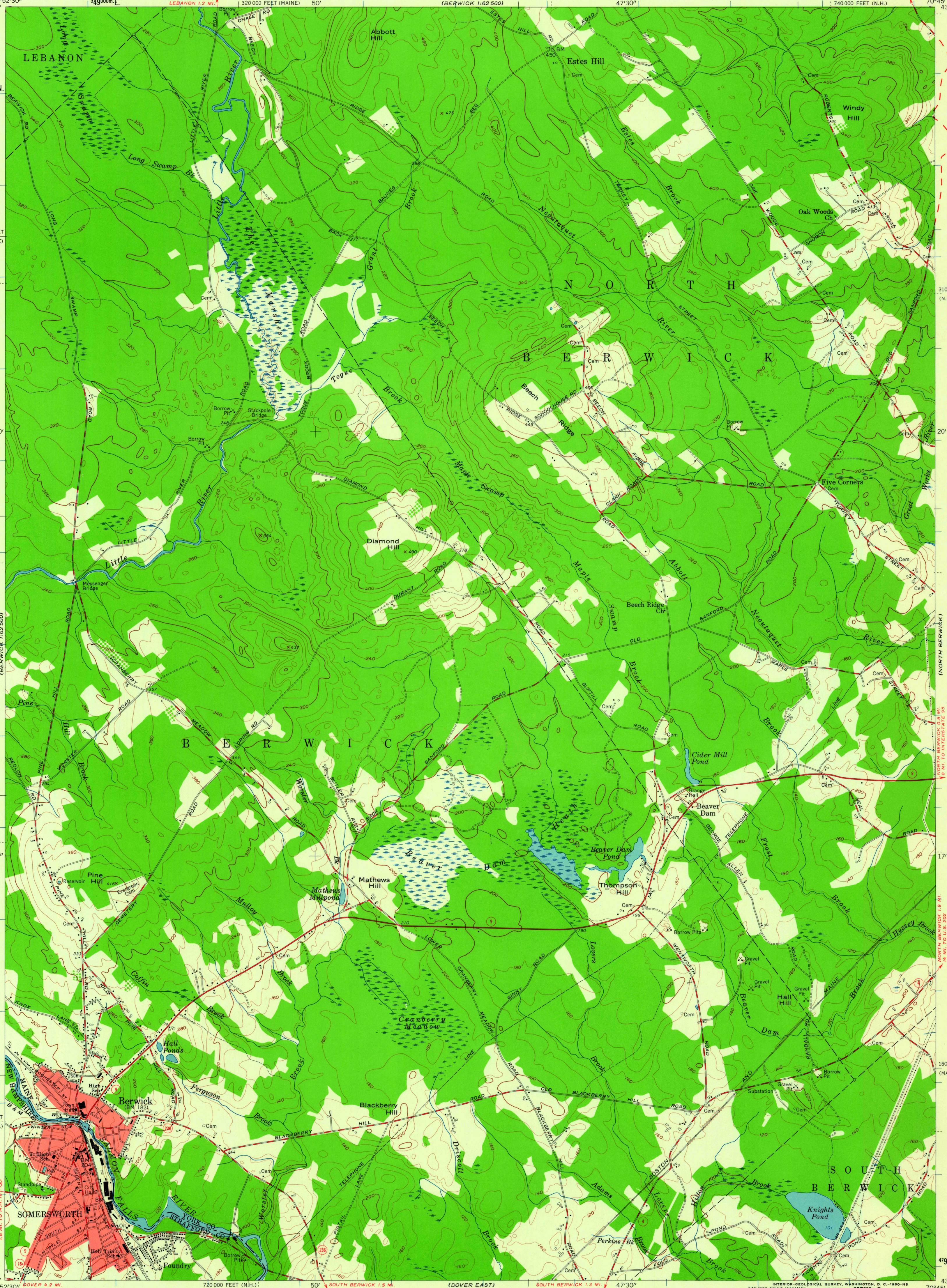


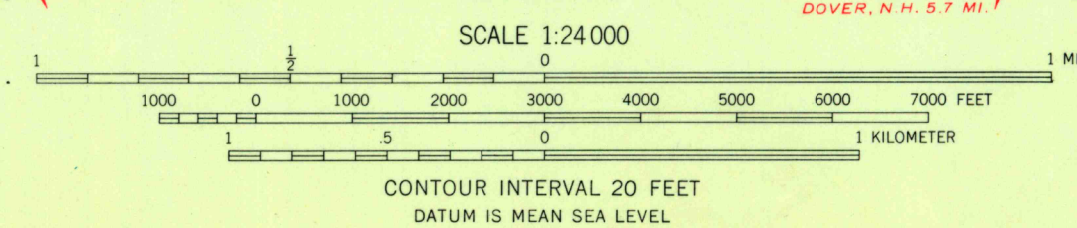
UNITED STATES  
DEPARTMENT OF THE INTERIOR  
GEOLOGICAL SURVEY

SOMERSWORTH QUADRANGLE  
MAINE-NEW HAMPSHIRE  
7.5 MINUTE SERIES (TOPOGRAPHIC)

SE 1/4 BERWICK 15' QUADRANGLE  
SANFORD (JUNE U.S. 202) 4.8 MI.  
1:740,000 FEET (N.H.)



Mapped by the Army Map Service  
Edited and published by the Geological Survey  
Control by USGS and USC&GS  
Culture and drainage in part compiled from aerial photographs  
taken 1943. Topography by planetable surveys 1944  
Revised by the Geological Survey 1958  
Polyconic projection. 1927 North American datum  
10,000-foot grids based on Maine coordinate system,  
west zone, and New Hampshire coordinate system  
1000-meter Universal Transverse Mercator grid ticks,  
zone 19, shown in blue  
Red tint indicates area in which only  
landmark buildings are shown



ROAD CLASSIFICATION  
Heavy-duty ——— Light-duty ———  
Medium-duty ——— Unimproved dirt ———  
State Route (red circle)

SOMERSWORTH, MAINE - N. H.  
SE 1/4 BERWICK 15' QUADRANGLE  
N 4315 - W 7045 / 7.5

1958

USGS Library  
Reston, VA.  
Topographic Archive

U.S.G.S.  
FILE COPY  
TOPOGRAPHIC DIVISION

DEC - 2 1960

4440