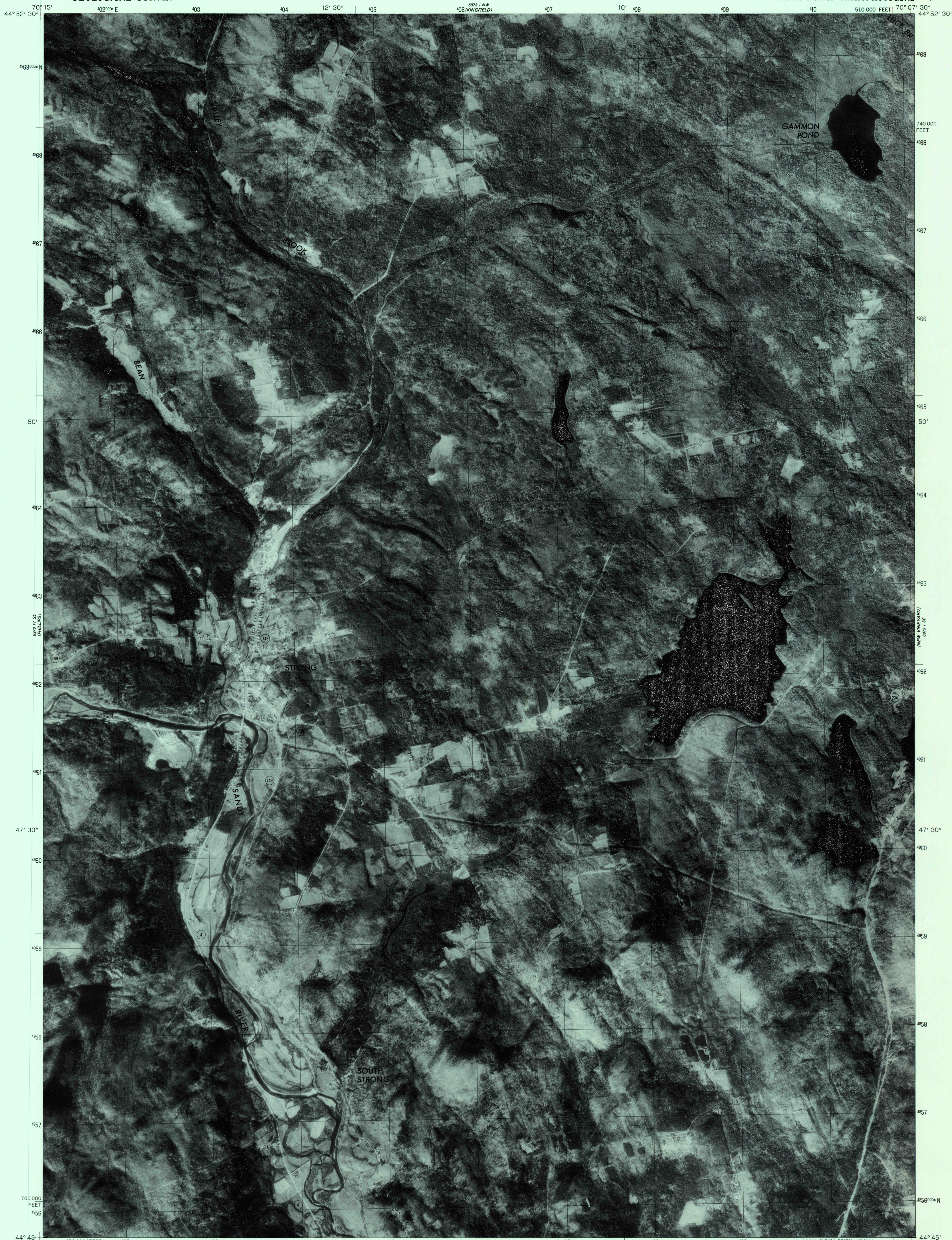
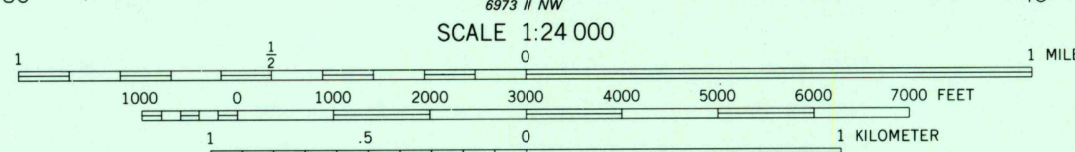
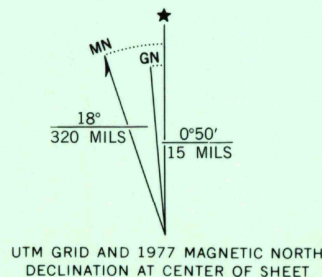


UNITED STATES
DEPARTMENT OF THE INTERIOR
GEOLOGICAL SURVEY

STRONG QUADRANGLE
MAINE
7.5 MINUTE SERIES ORTHOPHOTOQUAD



Produced and published by the Geological Survey
Orthophotograph prepared from 1:80,000-scale
aerial photograph taken October 31, 1977
Projection and 10,000-foot grid ticks: Maine
coordinate system, west zone (transverse Mercator)
1000-meter Universal Transverse Mercator grid,
zone 19. 1927 North American Datum
To place on the predicted North American Datum 1983
move the projection lines 3 meters south and
41 meters west as shown by dashed corner ticks
Photom imagery rectified by automatic correlation



PRINCIPAL NUMBERED HIGHWAYS
Interstate Route U. S. Route State Route

This quadrangle area also covered by SW quarter
of Kingfield 1:62,500-scale topographic map

STRONG, MAINE
N4445-W7007.5/7.5

1977

DMA 6973 1 SW-SERIES V011

THIS MAP COMPLIES WITH NATIONAL MAP ACCURACY STANDARDS
FOR SALE BY U. S. GEOLOGICAL SURVEY, RESTON, VIRGINIA 22092

