

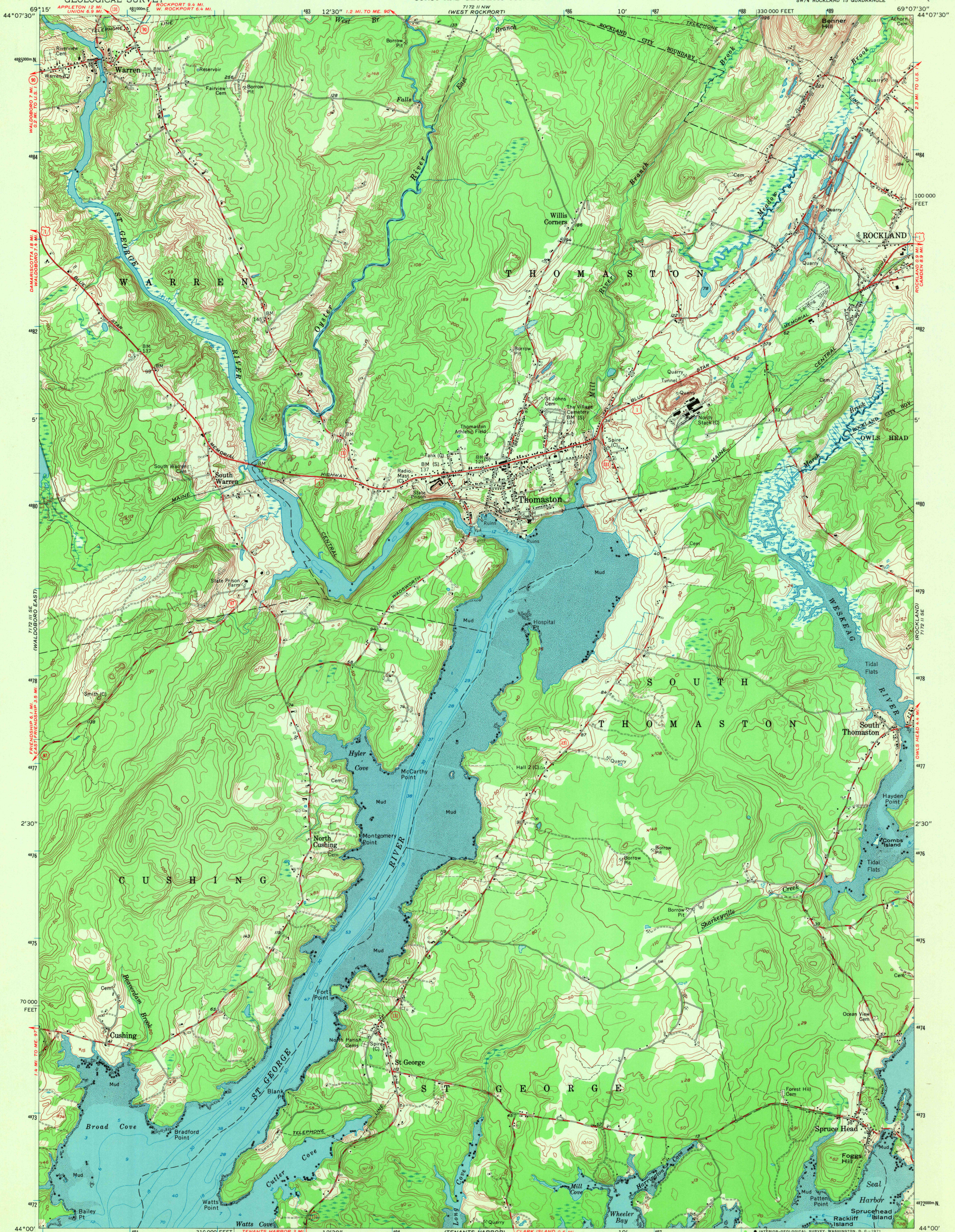
712 11 NE
TUNION

UNITED STATES
DEPARTMENT OF THE INTERIOR
GEOLOGICAL SURVEY

UNITED STATES
DEPARTMENT OF COMMERCE
COAST AND GEODETIC SURVEY

THOMASTON QUADRANGLE
MAINE-KNOX CO.
7.5 MINUTE SERIES (TOPOGRAPHIC)
SW/4 ROCKLAND 15' QUADRANGLE

712 11 NE
(CAMDEN)

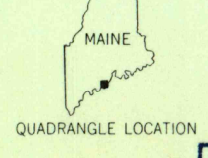


Mapped by U. S. Coast and Geodetic Survey
Edited and published by the Geological Survey
Control by USC&GS (C) and Maine Geodetic Survey (S)
Topography from aerial photographs by photogrammetric methods
Aerial photographs taken 1952-1953.
Field check 1955
Hydrography compiled from USC&GS charts 313 (1954),
322 (1952) and supplementary information
Polyconic projection. 1927 North American datum
10,000-foot grid based on Maine coordinate system, east zone
1000-meter Universal Transverse Mercator grid ticks,
zone 19, shown in blue
Unchecked elevations are shown in brown

UTM GRID AND 1955 MAGNETIC NORTH
DECLINATION AT CENTER OF SHEET

SCALE 1:24,000
CONTOUR INTERVAL 10 FEET
DATUM IS MEAN SEA LEVEL
DEPTH CURVES AND SOUNDINGS IN FEET-DATUM IS MEAN LOW WATER
SHORELINE SHOWN REPRESENTS THE APPROXIMATE LINE OF MEAN HIGH WATER
THE MEAN RANGE OF TIDE IS APPROXIMATELY 9.4 FEET

ROAD CLASSIFICATION
Heavy-duty ——— Light-duty ———
Medium-duty ——— Unimproved dirt ———
U.S. Route ——— State Route ———



U.S.G.S.
THOMASTON, MAINE
SW/4 ROCKLAND 15' QUADRANGLE
N4400-W6907.5/7.5
1955
AMS 7122 II SW-SERIES V811

2285
FEB 17 1971