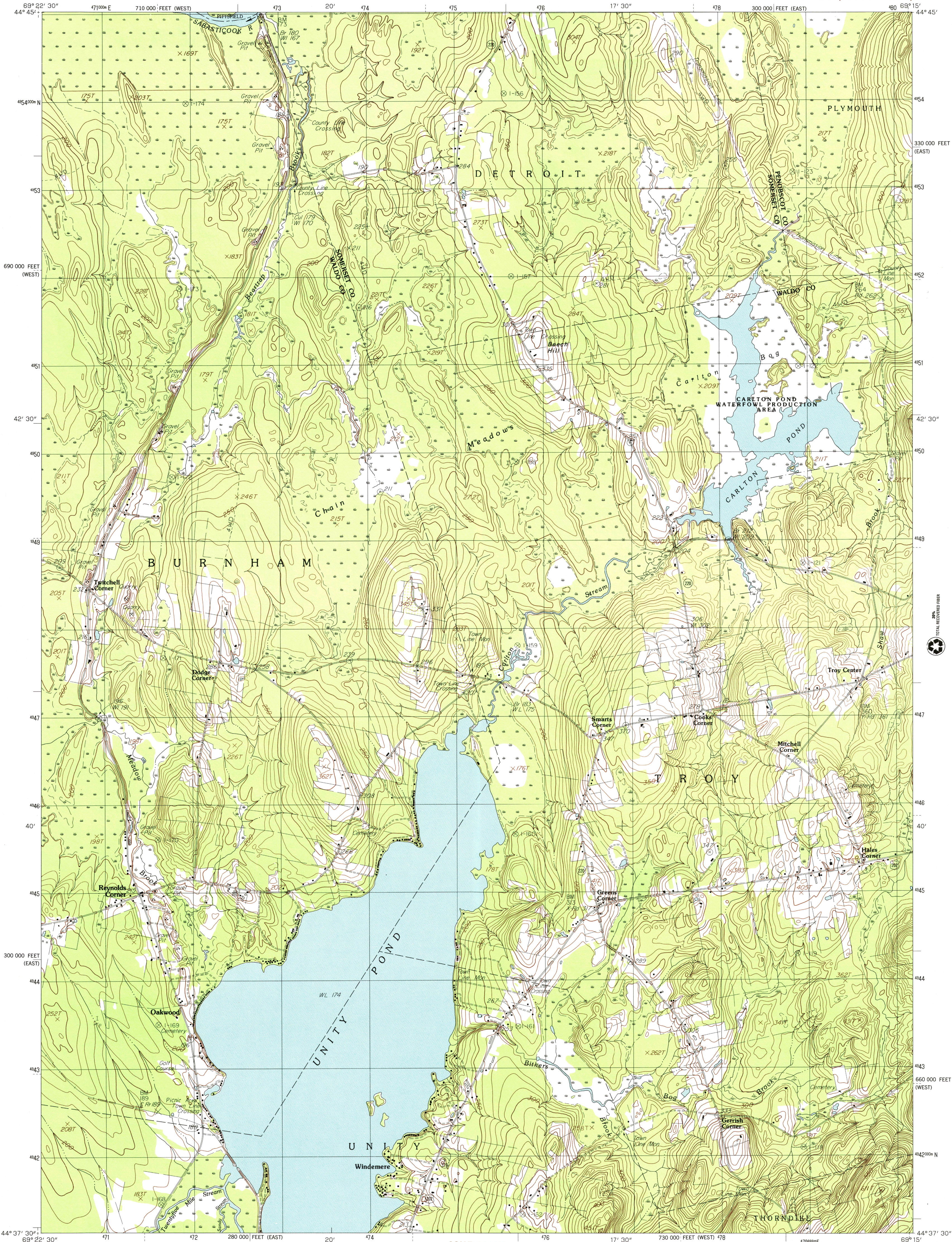




U.S. DEPARTMENT OF THE INTERIOR
U.S. GEOLOGICAL SURVEY

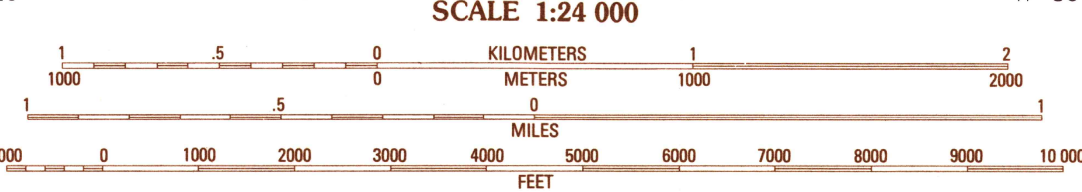
UNITY POND
MAINE

7.5 MINUTE SERIES (TOPOGRAPHIC)



PRODUCED BY THE UNITED STATES GEOLOGICAL SURVEY
CONTROL BY: USGS AND NOS/NOAA
COMPILED FROM AERIAL PHOTOGRAPHS TAKEN: 1976
FIELD CHECKED: 1979 MAP EDITED: 1982
PROJECTION: TRANSVERSE MERCATOR
GRID: 1000-METER UNIVERSAL TRANSVERSE MERCATOR ZONE 19
10,000-FOOT STATE GRID TICKS: MAINE, EAST AND WEST ZONES
UTM GRID DECLINATION WEST: 0.113° WEST
1982 MAGNETIC NORTH DECLINATION: 18.30° WEST
VERTICAL DATUM: NATIONAL GEODETIC VERTICAL DATUM OF 1929
HORIZONTAL DATUM: 1927 NORTH AMERICAN DATUM
To place on the predicted North American Datum of 1983, move
the projection lines as shown by dashed corner ticks
(3 meters south, 43 meters west)
There may be private inholdings within the boundaries of any
Federal and State Reservations shown on this map

PROVISIONAL MAP
Produced from original
manuscript drawings. Infor-
mation shown as of date of
field check



SCALE 1:24 000
CONTOUR INTERVAL 10 FEET

To convert meters to feet multiply by 3.2808
To convert feet to meters multiply by .3048

THIS MAP COMPLIES WITH NATIONAL MAP ACCURACY STANDARDS
FOR SALE BY U.S. GEOLOGICAL SURVEY, RESTON, VIRGINIA 22092



1	2	3	Pittsfield
4	5	6	Newport
7	8	9	Plymouth
10	11	12	Burnham
13	14	15	Dismont
16	17	18	Albion
19	20	21	Unity
22	23	24	Brooks West

ROAD LEGEND
Improved Road
Unimproved Road
Trail
Interstate Route U.S. Route State Route

UNITY POND, ME.
PROVISIONAL EDITION 1982
44069-F3-TF-024

