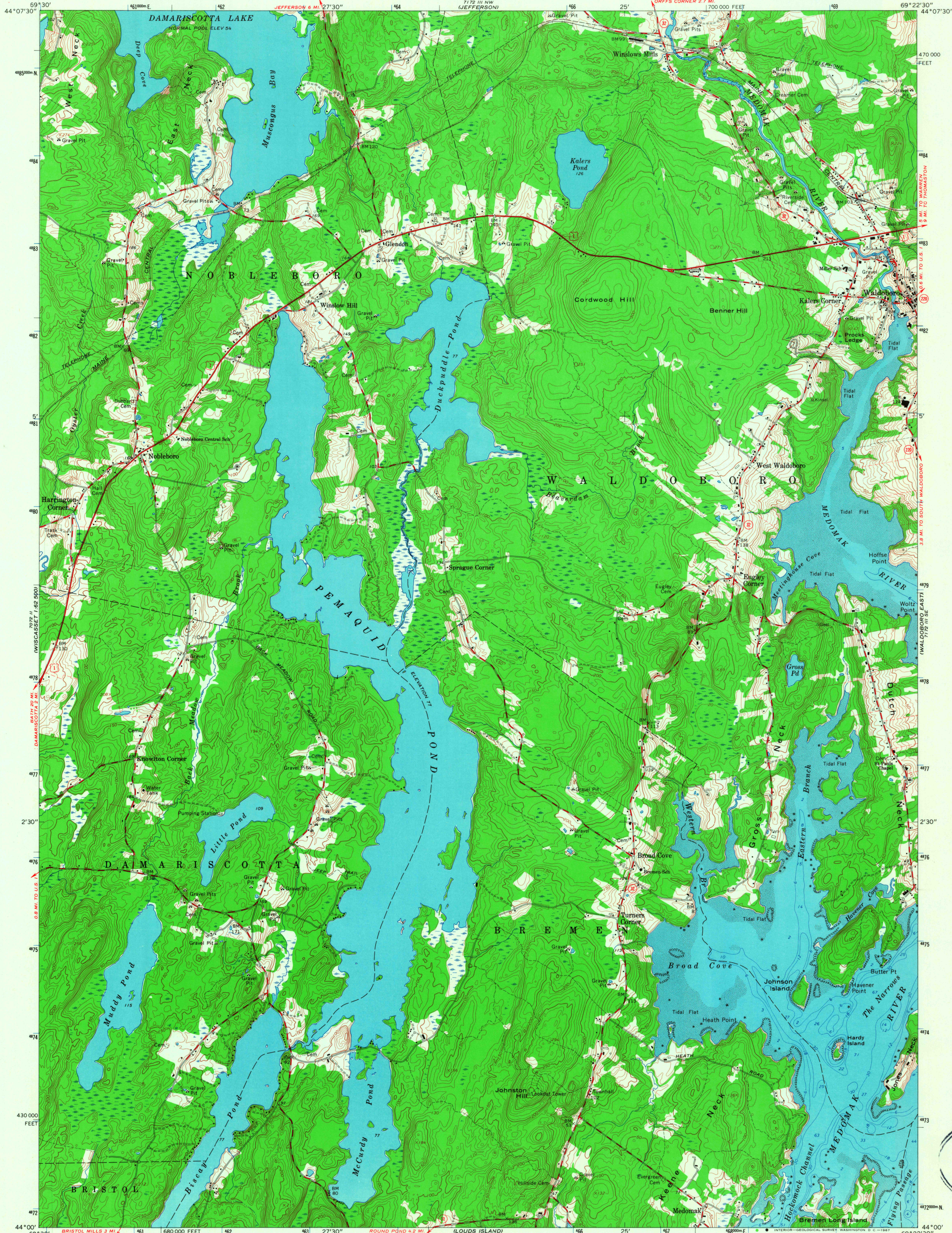


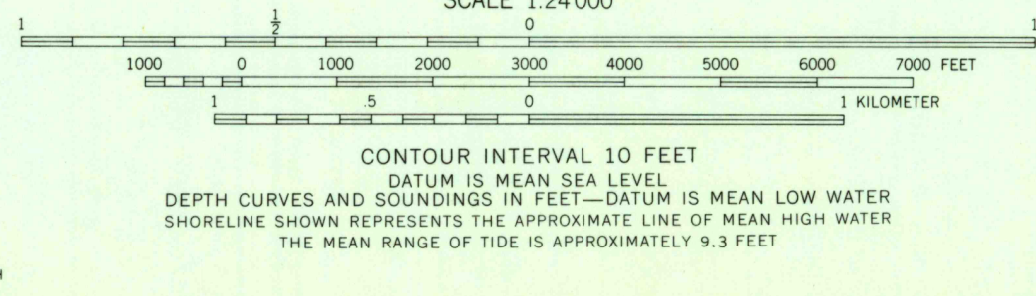
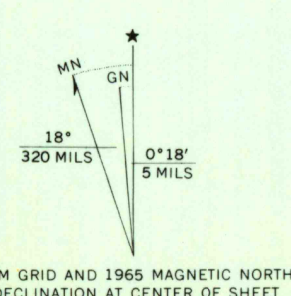
UNITED STATES
DEPARTMENT OF THE INTERIOR
GEOLOGICAL SURVEY

STATE OF MAINE
PUBLIC UTILITIES COMMISSION

WALDOBORO WEST QUADRANGLE
MAINE—LINCOLN CO.
7.5 MINUTE SERIES (TOPOGRAPHIC)
SW 1/4 WALDOBORO 15' QUADRANGLE



Mapped, edited, and published by the Geological Survey
Control by USGS, USC&GS and Maine Geodetic Survey
Topography by photogrammetric methods from aerial
photographs taken 1962. Field checked 1965
Selected hydrographic data compiled from USC&GS Chart 313 (1962)
This information is not intended for navigational purposes
Polyconic projection. 1927 North American datum
10,000-foot grid based on Maine coordinate system, west zone
1000-meter Universal Transverse Mercator grid ticks,
zone 19, shown in blue
Fine red dashed lines indicate selected fence and field lines where
generally visible on aerial photographs. This information is unchecked



U.S.G.S.
QUADRANGLE LOCATION
FILE COPY
TOPOGRAPHIC DIVISION

ROAD CLASSIFICATION
Heavy-duty ——— Light-duty ———
Medium-duty ——— Unimproved dirt ———
U.S. Route ——— State Route ———
WALDOBORO WEST, MAINE
SW 1/4 WALDOBORO 15' QUADRANGLE
N4400—W6922.5/7.5
1965
AMS 7172 III SW—SERIES V811

USGS NMD HISTORICAL MAP
REC'D FILE COPY

3695
APR 17 1968