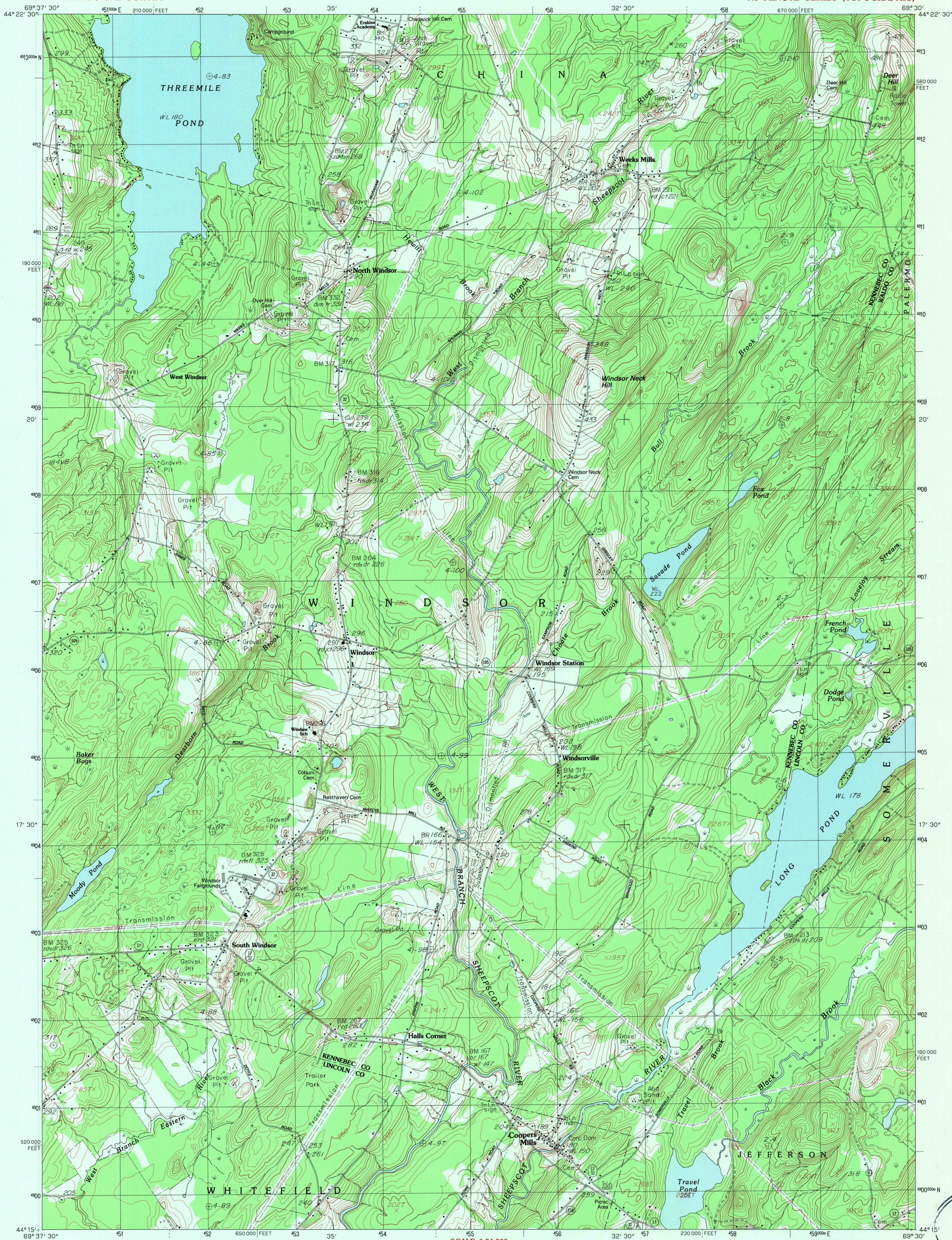


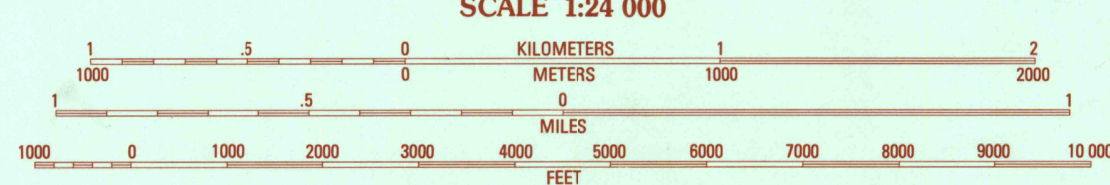
UNITED STATES
DEPARTMENT OF THE INTERIOR
GEOLOGICAL SURVEY

WEEKS MILLS QUADRANGLE
MAINE
7.5 MINUTE SERIES (TOPOGRAPHIC)



PRODUCED BY THE UNITED STATES GEOLOGICAL SURVEY
CONTROL BY U.S.G.S. NOS. 1000 AND 1001, OF TRANS.
COMPILED FROM AERIAL PHOTOGRAPHS TAKEN 1976
FIELD CHECKED 1979. MAP EDITED 1982
PROJECTION TRANSVERSE MERCATOR
GRID: 1000-METER UNIVERSAL TRANSVERSE MERCATOR
10,000-FOOT STATE GRID TICS MAINE WEST AND EAST ZONES
UTM GRID DECLINATION 0°24' WEST
1982 MAGNETIC NORTH DECLINATION 18° WEST
VERTICAL DATUM NATIONAL GEODETIC VERTICAL DATUM OF 1929
HORIZONTAL DATUM 1927 NORTH AMERICAN DATUM
To place on the predicted North American Datum of 1983, move
the projection lines as shown by dashed corner ticks (3 meters
south and 43 meters west)

PROVISIONAL MAP
Produced from original
manuscript drawings. Infor-
mation shown as of date of
field check



CONTOUR INTERVAL 10 FEET

To convert meters to feet multiply by 3.2808
To convert feet to meters multiply by .3048

THIS MAP COMPLIES WITH NATIONAL MAP ACCURACY STANDARDS
FOR SALE BY U.S. GEOLOGICAL SURVEY, RESTON, VIRGINIA 22092



QUADRANGLE LOCATION

1	2	3	1 Vassalboro
4	5	2 China Lake	
6	7	3 Palermo	
		4 Togus Pond	
		5 Razorville	
		6 East Pittston	
		7 North Whitefield	
		8 Jefferson	

ADJOINING 7.5' QUADRANGLE NAMES

ROAD LEGEND

- Improved Road
Unimproved Road
Trail
Interstate Route
U. S. Route
State Route

WEEKS MILLS, MAINE
PROVISIONAL EDITION 1982

44069-C5-TF-024

