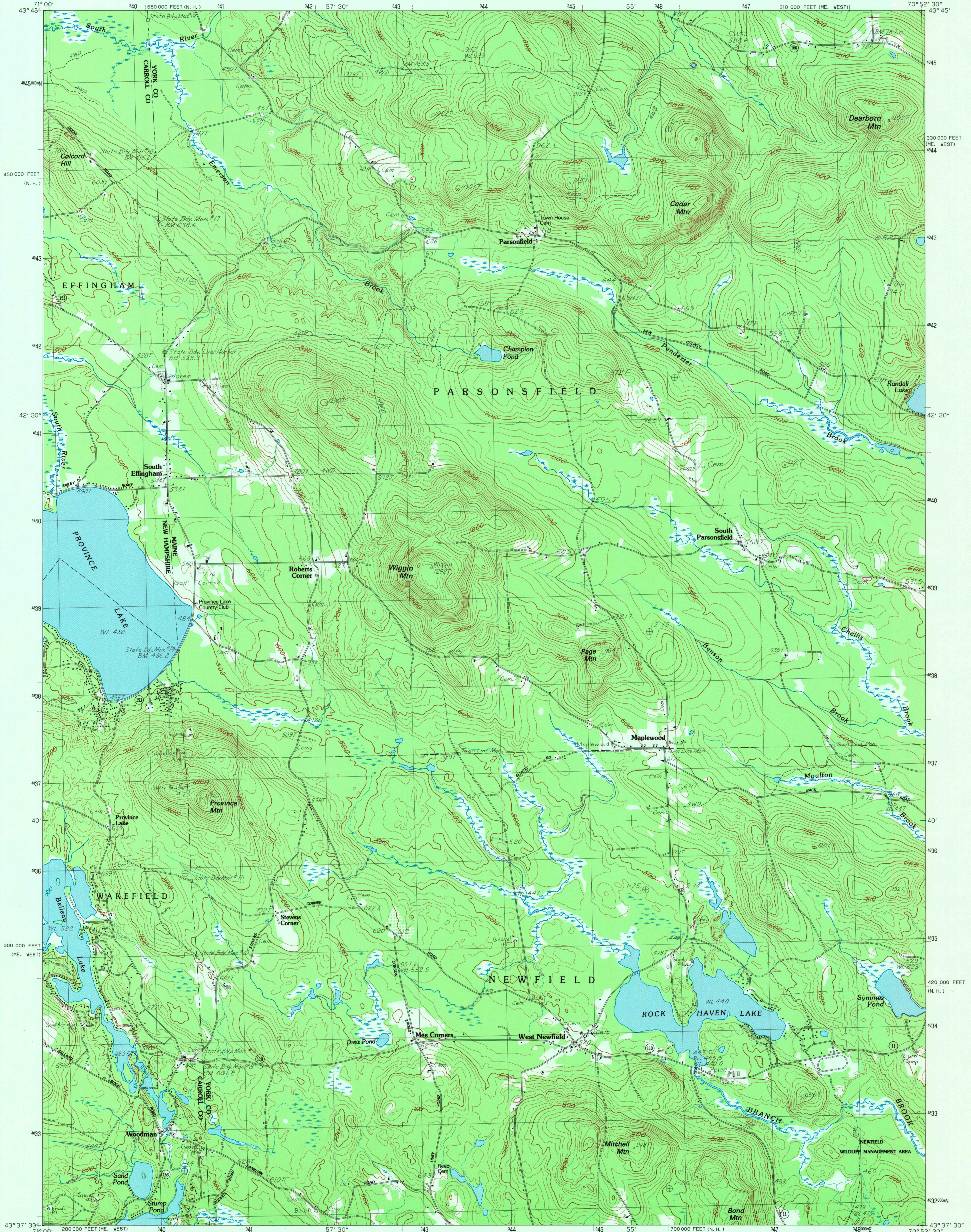


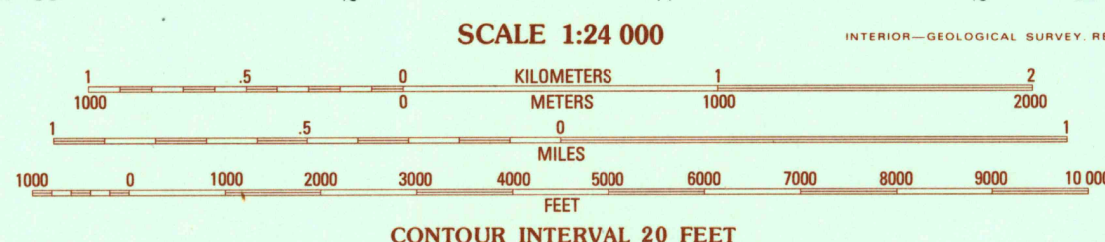
UNITED STATES
DEPARTMENT OF THE INTERIOR
GEOLOGICAL SURVEY

WEST NEWFIELD QUADRANGLE
MAINE-NEW HAMPSHIRE
7.5 MINUTE SERIES (TOPOGRAPHIC)



PRODUCED BY THE UNITED STATES GEOLOGICAL SURVEY
CONTROL BY U.S.G.S. AND NOS/NOAA
COMPILED FROM AERIAL PHOTOGRAPHS TAKEN 1978 AND 1979
FIELD CHECKED 1980. MAP EDITED 1983
PROJECTION TRANSVERSE MERCATOR
GRID: 1000-METER UNIVERSAL TRANSVERSE MERCATOR, ZONE 19
10,000-FOOT STATE GRID TICS MAINE, WEST ZONE
NEW HAMPSHIRE
UTM GRID DECLINATION 17° 30' WEST
1983 MAGNETIC NORTH DECLINATION 12° 30' WEST
VERTICAL DATUM NATIONAL GEODETIC DATUM OF 1929
HORIZONTAL DATUM 1927 NORTH AMERICAN DATUM
To place on the predicted North American Datum of 1983, move
the projection lines as shown by dashed corner ticks (4 meters
south and 41 meters west)
There may be private inholdings within the boundaries of any
Federal and State Reservations shown on this map

PROVISIONAL MAP
Produced from original
manuscript drawings. Infor-
mation shown as of date of
field check



THIS MAP COMPLIES WITH NATIONAL MAP ACCURACY STANDARDS
FOR SALE BY U. S. GEOLOGICAL SURVEY, RESTON, VIRGINIA 22092

1	2	3	1	Freedom
2	3	4	2	Kezar Falls
3	4	5	3	Cornish
4	5	6	4	Ossipee
5	6	7	5	Limerick
6	7	8	6	Sanbornville
			7	Great East Lake
			8	Mousam Lake

ADJOINING 7.5' QUADRANGLE NAMES

ROAD LEGEND
Improved Road
Unimproved Road
Trail
Interstate Route U. S. Route State Route

WEST NEWFIELD, MAINE - N. H.
PROVISIONAL EDITION 1983

43070-F8-TF-024

7-18-84